

Cylinder, Type ADVU - Basic Version

Accessory Dimensions

Rod clevis type SG-...

SG-...

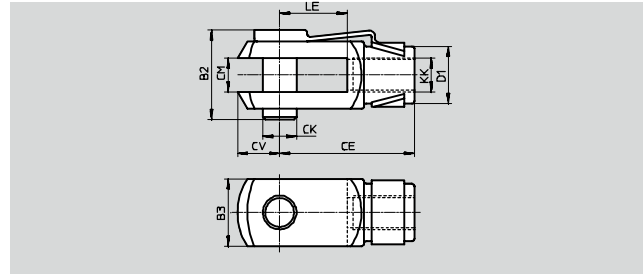
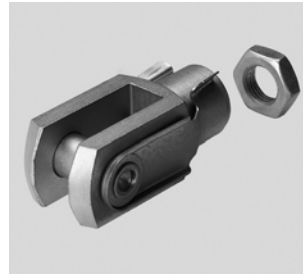
Includes:

- 1 rod clevis
- 1 hinged spring pin
- 1 hex nut

The rod clevis is fitted to the piston rod thread and permits swivelling movement of the cylinder in one plane.

Materials:

- Rod clevis: Galvanized steel
- Nut: Galvanized steel



Type	Size [in.]	B2	B3	CE	CK ∅	CM
				±0.016	H9	
SG-10-32	1/2	0.43	0.31	0.62	0.16	0.16
SG-5/16-24	5/8	0.85	0.63	1.26	0.31	0.31
SG-3/8-24	3/4 - 1 5/8	1.02	0.79	1.57	0.39	0.39
SG-1/2-20	2	1.22	0.94	1.89	0.47	0.47

Type	Size [in.]	CV	D1 ∅	KK	LE	Weight
					±0.020	[lb]
SG-10-32	1/2	0.20	0.31	10-32 UNF-2B	0.31	0.044
SG-5/16-24	5/8	0.39	0.55	5/16-24 UNF-2B	0.63	0.110
SG-3/8-24	3/4 - 1 5/8	0.47	0.71	3/8-24 UNF-2B	0.79	0.220
SG-1/2-20	2	0.55	0.79	1/2-20 UNF-2B	0.94	0.380

Rod eye type SGS-...

SGS-...

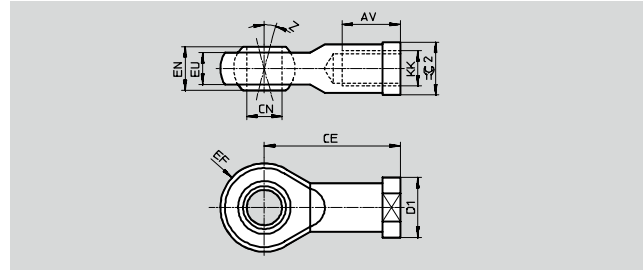
Includes:

- 1 rod eye
- 1 hex nut

The rod eyes are maintenance-free due to the material combination steel/PTFE-bronze material in the swivel bearing.

Materials:

- Rod eye: Galvanized steel
- Bearing cup: SnBz8 (PTFE-bronze material)
- Nut: Galvanized steel



Type	Size [in.]	AV	CE	CN ∅	D1 ∅	EF	EN
				H7			
SGS-10-32	1/2	0.39	1.06	0.20	0.43	0.35	0.31
SGS-5/16-24	5/8	0.63	1.42	0.31	0.63	0.47	0.47
SGS-3/8-24	3/4 - 1 5/8	0.79	1.69	0.39	0.75	0.55	0.55
SGS-1/2-20	2	0.87	1.97	0.47	0.87	0.63	0.63

Type	Size [in.]	EU	KK	Z	∅ 2 [in.]	Weight
						[lb]
SGS-10-32	1/2	0.24	10-32 UNF-2B	13	0.433	0.055
SGS-5/16-24	5/8	0.35	5/16-24 UNF-2B	13	0.551	0.099
SGS-3/8-24	3/4 - 1 5/8	0.41	3/8-24 UNF-2B	13	0.669	0.154
SGS-1/2-20	2	0.47	1/2-20 UNF-2B	13	0.748	0.300

Festo - Your Partner in Automation



1 Festo Inc.
5300 Explorer Drive
Mississauga, ON L4W 5G4
Canada

Festo Customer Interaction Center
Tel: 1 877 463 3786
Fax: 1 877 393 3786
Email: customer.service.ca@festo.com



2 Festo Pneumatic
Av. Ceylán 3,
Col. Tequesquináhuac
54020 Tlalnepantla,
Estado de México

Multinational Contact Center
01 800 337 8669
ventas.mexico@festo.com



3 Festo Corporation
1377 Motor Parkway
Suite 310
Islandia, NY 11749

Festo Customer Interaction Center
1 800 993 3786
1 800 963 3786
customer.service.us@festo.com



4 Regional Service Center
7777 Columbia Road
Mason, OH 45040

Connect with us



www.festo.com/socialmedia



www.festo.com

Subject to change