

### Coupling Plate

#### Type KSZ-...

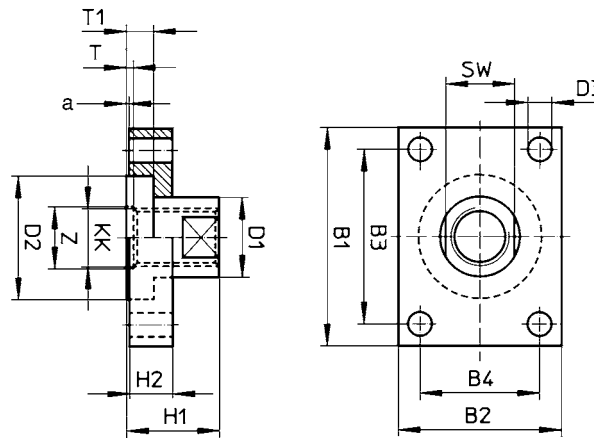
(For cylinders with non-rotating piston rod)

This coupling plate is used to provide a fixed connection between the cylinder and the workpiece to be moved.

The thread on the piston rod is used to provide finite stroke length adjustment. A counter nut is used to secure the adjustment.

When the plate mounting bolts are secured, friction keeps the coupling from rotating.

Note: The torque on the coupling may not exceed the allowable torque for the cylinder.



Dimension  
a 0.006 in / 0.15 mm

#### Tightening Torque and Thread Depth

Type KSZ-	M6 in-lb / Nm	M8 in-lb / Nm	3/8-24 UNF M10 x 1.25 in-lb / Nm	1/2-20 UNF M12 x 1.25 in-lb / Nm	5/8-18 UNF M16 x 1.5 in-lb / Nm	3/4-16 UNF M20 x 1.5 in-lb / Nm
Max. tightening torque for mounting bolts	52.4 / 5.9	52.4 / 5.9	52.4 / 5.9	52.4 / 5.9	87.9 / 9.9	213.1 / 24
Max. tightening torque for locking nut on piston rod	61.3 / 6.9	142.1 / 16	301.9 / 34	541.7 / 61	1314.2 / 148	2628.4 / 296
Transferable coupling torque with friction coefficient $\mu = -0.1$ and 10x safety factor*	18.6 / 2.1	44.4 / 5	106.6 / 12	195.4 / 22	506.1 / 57	1005.6 / 120
Minimum piston rod thread-in depth	in / mm 0.16 / 4	in / mm 0.20 / 5	in / mm 0.24 / 6	in / mm 0.31 / 8	in / mm 0.39 / 10	in / mm 0.47 / 12

\*At max. torque

Order Number				For Piston Thread KK Inch / Metric	Dimensions						
Inch Series		Metric Series			B1	B2	B3	B4	D1 dia in / mm	D2 dia in / mm	D3 dia in / mm
Part No.	Type	Part No.	Type	in / mm	in / mm	in / mm	in / mm	in / mm	in / mm	in / mm	
—	—	36123	KSZ-M6	— / M6	1.18 / 30	0.98 / 25	0.79 / 20	0.59 / 15	0.47 / 12	0.71 / 18	0.22 / 5.5
—	—	36124	KSZ-M8	— / M8	1.38 / 35	1.18 / 30	0.98 / 25	0.79 / 20	0.55 / 14	0.79 / 20	0.22 / 5.5
36129	KSZ-3/8-24 UNF	36125	KSZ-M10 x 1.25	3/8-24 UNF / M10 x 1.25	1.57 / 40	1.38 / 35	1.18 / 30	0.98 / 25	0.67 / 17	1.02 / 26	0.22 / 5.5
36130	KSZ-1/2-20 UNF	36126	KSZ-M12 x 1.25	1/2-20 UNF / M12 x 1.25	1.97 / 50	1.57 / 40	1.57 / 40	1.18 / 30	0.67 / 17	1.02 / 26	0.22 / 5.5
36131	KSZ-5/8-18 UNF	36127	KSZ-M16 x 1.5	5/8-18 UNF / M16 x 1.5	2.36 / 60	1.77 / 45	1.89 / 48	1.30 / 33	0.87 / 22	1.34 / 34	0.26 / 6.6
36132	KSZ-3/4-16 UNF	36128	KSZ-M20 x 1.5	3/4-16 UNF / M20 x 1.5	2.83 / 72	1.97 / 50	2.24 / 57	1.38 / 35	1.18 / 30	1.73 / 44	0.35 / 9

Order Number				For Piston Thread KK Inch / Metric	Dimensions						
Inch Series		Metric Series			H1	H2	SW	T	T1	Z dia in / mm	Weight lb / kg
Part No.	Type	Part No.	Type	in / mm	in / mm	mm	in / mm	in / mm	in / mm	in / mm	
—	—	36123	KSZ-M6	— / M6	0.63 / 16	0.31 / 8	10	0.08 / 2	0.16 / 3.95	0.31 / 8	
—	—	36124	KSZ-M8	— / M8	0.87 / 22	0.31 / 8	13	—	0.16 / 3.95	—	
36129	KSZ-3/8-24 UNF	36125	KSZ-M10 x 1.25	3/8-24 UNF / M10 x 1.25	0.79 / 20	0.37 / 10	15	—	0.23 / 5.95	—	
36130	KSZ-1/2-20 UNF	36126	KSZ-M12 x 1.25	1/2-20 UNF / M12 x 1.25	0.87 / 22	0.47 / 12	15	—	0.23 / 5.95	—	
36131	KSZ-5/8-18 UNF	36127	KSZ-M16 x 1.5	5/8-18 UNF / M16 x 1.5	0.98 / 25	0.47 / 12	19	—	0.27 / 6.95	—	
36132	KSZ-3/4-16 UNF	36128	KSZ-M20 x 1.5	3/4-16 UNF / M20 x 1.5	1.26 / 32	0.59 / 15	27	—	0.35 / 8.95	—	

# Festo - Your Partner in Automation



**1 Festo Inc.**  
5300 Explorer Drive  
Mississauga, ON L4W 5G4  
Canada

**Festo Customer Interaction Center**  
Tel: 1 877 463 3786  
Fax: 1 877 393 3786  
Email: [customer.service.ca@festo.com](mailto:customer.service.ca@festo.com)



**2 Festo Pneumatic**  
Av. Ceylán 3,  
Col. Tequesquináhuac  
54020 Tlalneantla,  
Estado de México

**Multinational Contact Center**  
01 800 337 8669  
[ventas.mexico@festo.com](mailto:ventas.mexico@festo.com)



**3 Festo Corporation**  
1377 Motor Parkway  
Suite 310  
Islandia, NY 11749

**Festo Customer Interaction Center**  
1 800 993 3786  
1 800 963 3786  
[customer.service.us@festo.com](mailto:customer.service.us@festo.com)



**4 Regional Service Center**  
7777 Columbia Road  
Mason, OH 45040

Connect with us



[www.festo.com/socialmedia](http://www.festo.com/socialmedia)



[www.festo.com](http://www.festo.com)

Subject to change