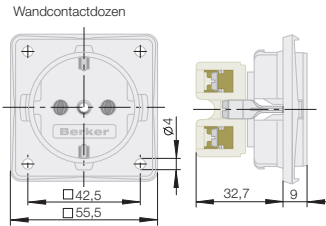
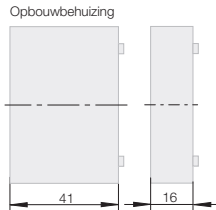
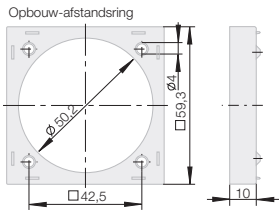
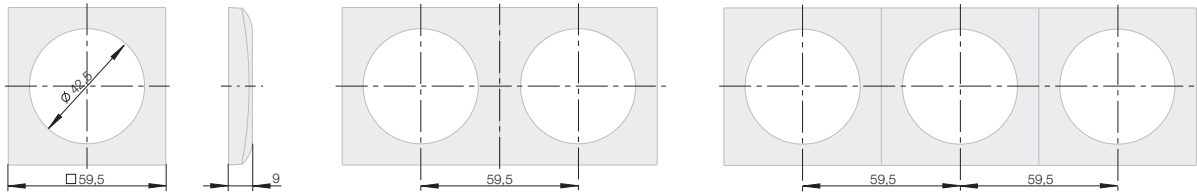
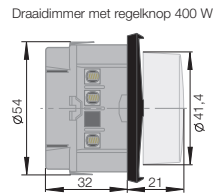
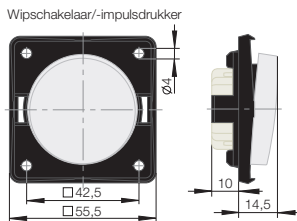


Berker Integro



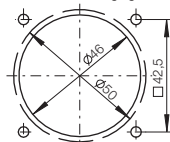
Attentie!
Voor de bevestiging van de inbouwelementen moeten platkopschroeven, maat M3 of M3,5 gebruikt worden.



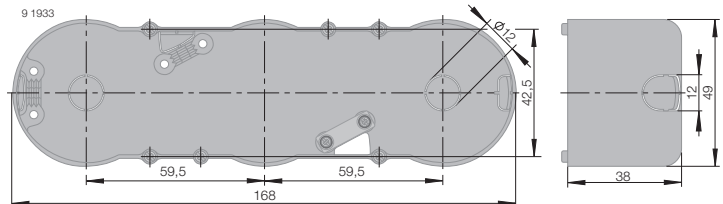
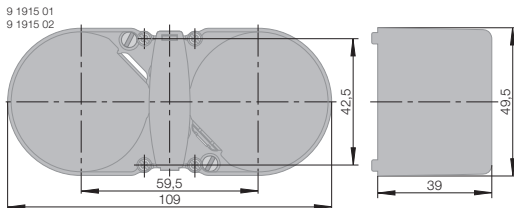
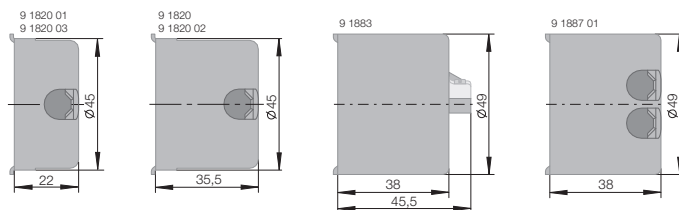
System	Inbouwdiepte
SCHUKO-wandcontactdoos	32,7 mm
Wandcontactdoos met penaaarde	29,2 mm
Wandcontactdoos zonder randaarde	30,0 mm
Wandcontactdoos met aardcontact „Denemarken“	28,0 mm
Wandcontactdoos met aardcontact „Zwitserland“ type 13	27,5 mm
Wandcontactdoos met aardcontact „USA/Canada“ NEMA 5-15 R	31,0 mm
Wandcontactdoos met aardcontact „Italië“	28,0 mm
Wandcontactdoos met aardcontact „Australië“	16,5 mm
Wandcontactdoos zonder randaarde „Euro-Amerikanischer Standard“	18,5 mm
Wandcontactdoos met aardcontact „British Standard“	21,0 mm

Berker Integro Flow

Inbouwopening
Ø 46 mm of Ø 50 mm afh.
van aanraakbeveiligingsdoos



Aanraakbeveiligingsdozen



Opbouw

