



Sample image

Datasheet

Article number: 70009989

Designation: KG80.T204/01.E

Description: Switch Global Disconnecter

IEC 60947-3 EN 60947-3, VDE 0660 Teil 107							
Tension assignée d'isolement Ui							
					<i>Tension (V) AC / DC</i>		
					690 AC		
Courant ininterrompu et thermique conventionnel lu/lth							
<i>Intensité (A)</i>	<i>Température Ambiante (°)</i>	<i>Température Maxi (°)</i>	<i>Spécification complémentaire</i>				
80	50	55	Température ambiante +50°C durant 24 heures avec point à +55°C				
Courant assigné d'emploi Ie							
<i>Catégorie d'emploi</i>					<i>Tension (V)</i>		<i>Intensité (A)</i>
AC-32A					20 - 400		80
Puissance assignée d'emploi							
<i>Catégorie d'emploi</i>	<i>Tension (V)</i>	<i>Nb de phases</i>	<i>Nb de pôles</i>	<i>Puissance (kW)</i>			
AC-3	220 - 240	3	3	15			
AC-3	380 - 440	3	3	22			
AC-3	660 - 690	3	3	18,50			
AC-23A	220 - 240	3	3	18,50			
AC-23A	380 - 440	3	3	30			
AC-23A	660 - 690	3	3	22			
Protection par fusible (IEC)							
<i>Caractéristique</i>					<i>Nombre de fusible</i>		<i>Intensité (A)</i>
gG					1		80
UL60947-4-1 , UL508							
Nominal Voltage							
					<i>Tension (V) AC / DC</i>		
					600 AC		
Tension assignée d'isolement Ui							
					<i>Tension (V) AC / DC</i>		
					600 AC		
Rated thermal current							
			<i>Intensité (A)</i>	<i>Température Ambiante (°)</i>	<i>Additional Text</i>		
			80	0 - 40	-		
Horsepower rating							
<i>Across-the-Line Motor Starting</i>	<i>Tension (V)</i>	<i>Nb de phases</i>	<i>Nb de pôles</i>	<i>Power (HP)</i>	<i>Ambient temperature [°C]</i>		
DOL	110 - 120	1	2	5	40		
DOL	220 - 240	1	2	10	40		
DOL	277 - 277	1	2	15	40		
DOL	415 - 415	1	2	20	40		
DOL	440 - 480	1	2	20	40		
DOL	550 - 600	1	2	30	40		
DOL	110 - 120	3	3	10	40		
DOL	220 - 240	3	3	25	40		
DOL	415 - 415	3	3	30	40		
DOL	440 - 480	3	3	50	40		
DOL	550 - 600	3	3	50	40		
SCCR / Max. fuse rating							
<i>Conditions of acceptability</i>							
These devices are suitable for use on circuits capable of delivering not more than 10kA rms symmetrical amperes, 600V ac max. when protected by Type RK1 fuses or Circuit Breaker Type SFHA36AT0250, manufactured by General Electric.							
Suitable for use on a circuit capable of delivering not more than 65000 rms symmetrical amperes 600V max., when protected by Class J fuses, 100A max.							
Temp. rating of wire							
				<i>Temperature rating (°C)</i>	<i>Intensité (A)</i>	<i>Text</i>	
				75	--	--	
Connecting instructions							
<i>Markings</i>							
Break all lines.							
General Use							
<i>AC / DC</i>	<i>Tension (V)</i>	<i>Intensité (A)</i>	<i>Nb de phases</i>	<i>Nb de pôles</i>	<i>No. of contacts in series</i>		
AC	277	80	1	1	1		

General Use					
AC / DC	Tension (V)	Intensité (A)	Nb de phases	Nb de pôles	No. of contacts in series
AC	600	80	1	2	1
AC	600	80	3	3	1

General Information

Text

- The operating handle and position indicating means to be used with these manual motor controllers should be provided from the manufacturer, or the operating handle and position indicating means to be used should have been previously evaluated in combination with the manual motor controllers.

- When intended for use as a motor disconnecter the device shall be provided with a method of being locked in the OFF-position.


Nominal Voltage	
Tension (V)	AC / DC
	600 AC
Tension assignée d'isolement UI	
Tension (V)	AC / DC
	600 AC
Rated thermal current	
Intensité (A)	Température Ambiante (°) Additional Text
80	0 - 40 -

Horsepower rating					
Across-the-Line Motor Starting	Tension (V)	Nb de phases	Nb de pôles	Power (HP)	Ambient temperature [°C]
DOL	110 - 120	1	2	5	40
DOL	220 - 240	1	2	10	40
DOL	277 - 277	1	2	15	40
DOL	415 - 415	1	2	20	40
DOL	440 - 480	1	2	20	40
DOL	550 - 600	1	2	30	40
DOL	110 - 120	3	3	10	40
DOL	220 - 240	3	3	25	40
DOL	415 - 415	3	3	30	40
DOL	440 - 480	3	3	50	40
DOL	550 - 600	3	3	50	40

Temp. rating of wire	
Temperature rating (°C)	Intensité (A) Text
75	--






General Use					
AC / DC	Tension (V)	Intensité (A)	Nb de phases	Nb de pôles	No. of contacts in series
AC	277	80	1	1	1
AC	600	80	1	2	1
AC	600	80	3	3	1

GENERAL TECHNICAL INFORMATION					
Size of conductor					
composition of conductor	Min. / Max. value	No. of conductor per terminal	Cross section (mm ²) or (AWG/kcmil)	Material of the wire	
solid wire	Min.	1	2,5mm ²	Copper	
flexible wire	Min.	1	4mm ²	Copper	
flexible wire	Max.	1	35mm ²	Copper	
flexible wire	Max.	1	AWG 2	Copper	
Single-core or stranded wire	Max.	1	AWG 1/0	Copper	
Single-core or stranded wire	Max.	1	50mm ²	Copper	
flexible wire with sleeve	Max.	1	35mm ²	Copper	
flexible wire with ferrule according to DIN 46228	Min.	1	2,5mm ²	Copper	

Stripping length	
Length (mm) --	
	

Recommandations concernant le tournevis	
Type	Value
Tournevis cruciforme	PH2
Slot screwdriver according to DIN 5264	1,2x6,5

Tightening torque of screws		
tightening torque (Nm)		tightening torque (lb-in)
3		27

Approbations	
Specification	Marking
EAC	
CE marking	
UK Directives	
CSA C.22.2 No.14	
GB/T14048.3	

General Information

Text

- EMC Note: This device is suitable for use in environment A and B.
- Ne jamais lubrifier ou traiter les contacts.
- Les commutateurs ne peuvent être montés, branchés et mis en service que par une personne qualifiée selon les règles techniques en vigueur.
- Use copper wire only. Do not coat the wire end with tin.
- Les bornes qui ne sont pas supposées être utilisées pour le raccordement de l'appareil sont livrées serrées et ne doivent pas être desserrées. Si toutefois ces bornes sont malgré tout ouvertes accidentellement, vérifier qu'aucun shunt n'est manquant. Le câblage terminé, s'assurer que toutes les bornes sont serrées.

Waste Electrical & Electronic Equipment (WEEE)

Picture name Description



Do not throw in the trash as care must be taken to ensure environmentally sound disposal and recycling. Please either use an environmentally friendly waste disposal company; return to the supplier for disposal; or return direct to the manufacturer, Kraus & Naimer. You can find local Kraus & Naimer offices at www.krausnaimer.com

Proposition 65

Picture name Description



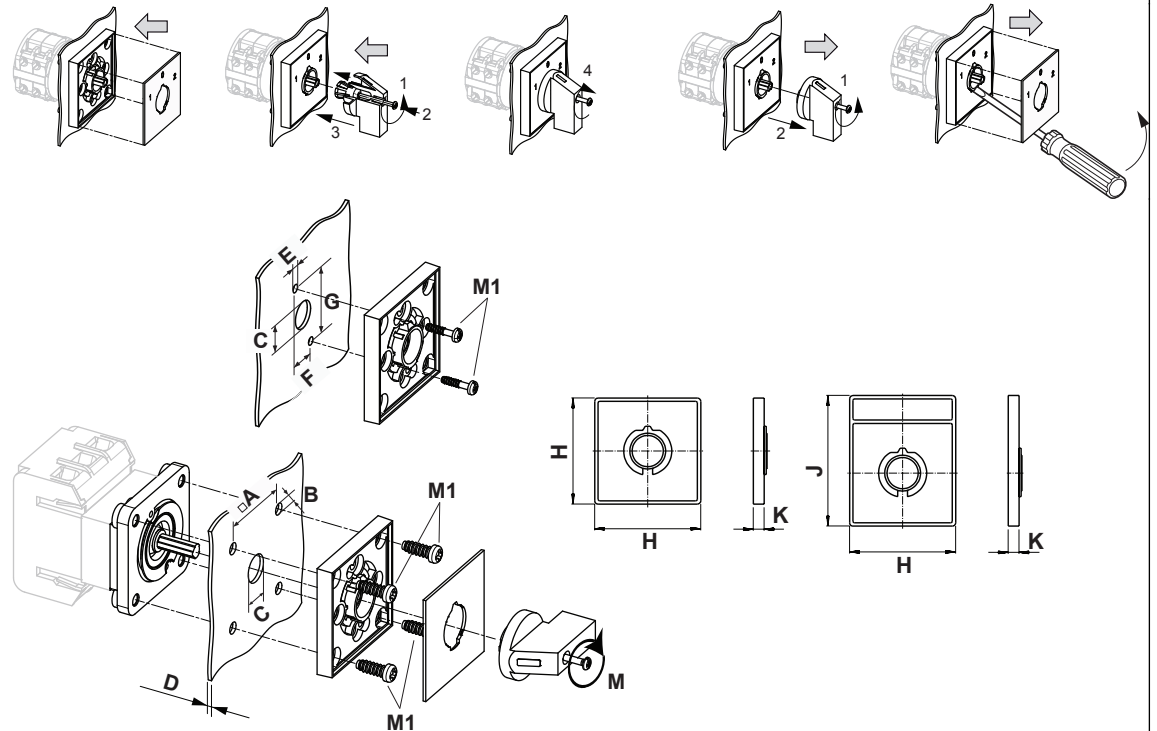
WARNING: This product can expose you to chemicals including nickel and lead, which is known to the State of California to cause cancer. For more information go to www.P65Warnings.ca.gov.

Type de contacts: Rigid contact bridge

Revêtement des Contacts: Silver

Types de raccordement: Screw terminal

Fixation-E



IP - Code front side		IP66, IP67
Stages		1,00 - 12,00
A	□	48,00 mm
B	∅	5,00 mm
C	∅	10,00 - 15,00 mm
D	H	<= 4,00 mm
E	∅	4,50 mm
F	H	14,00 mm
G	H	37,00 mm
H	H	64,00 mm
J	H	78,00 mm
K	H	7,40 mm
M	⌀	0,70 Nm
M1	⌀	0,90 Nm

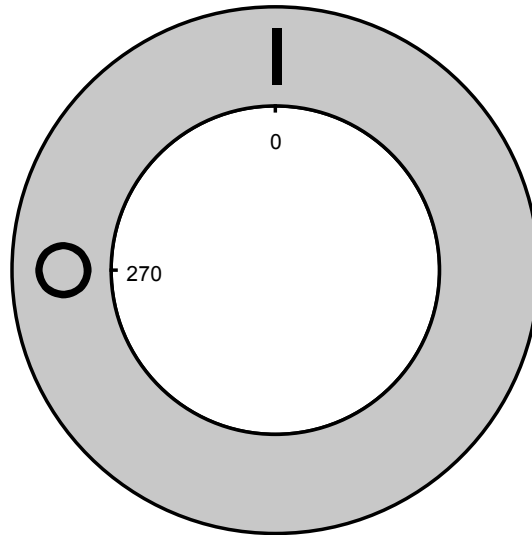
Wiring diagram

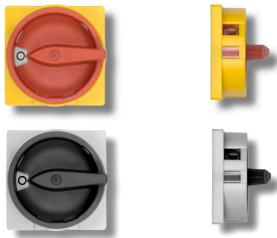
KG80.T304.E



Face plate

S1.F456/C10.V11H





Sample image

PADLOCK DEVICE

with F-handle ring

Designation: S1.V840G/D61/A2

Colour of F-handle ring: "D" red

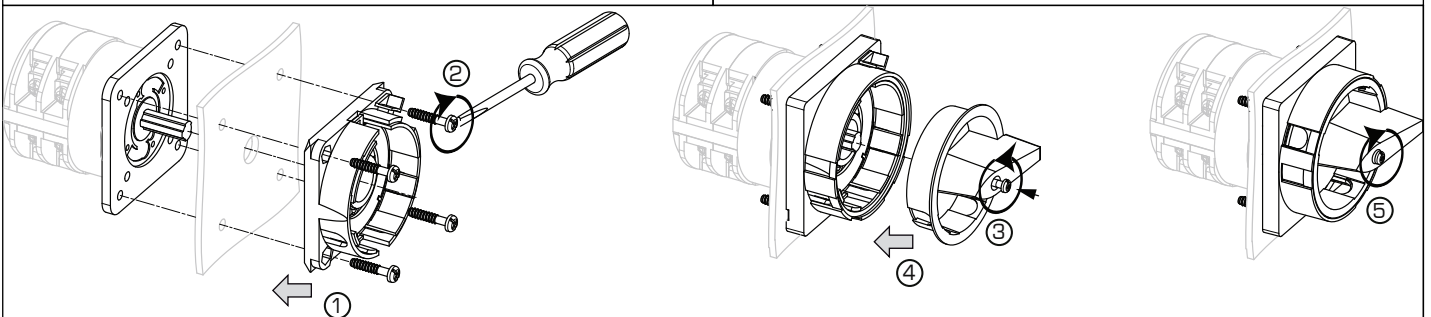
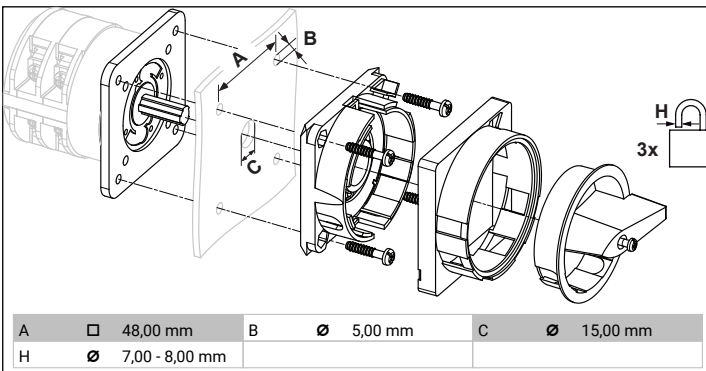
Colour of face ring: "6" yellow

Locking position: "1" at 270° (1x90°)

Type of mounting: "A" for type of mounting E

Type of mounting: "A" for type of mounting GK (Rose)

Switch type: "2" for KA-, KG- and KH(R)-switches



MOUNTING

1 + 2 The padlock device has to be mounted by four cylinder head screws from the front.

3 Loosen the screw and

4 Push it into the handle onto the shaft

5 Fasten the screw.

