

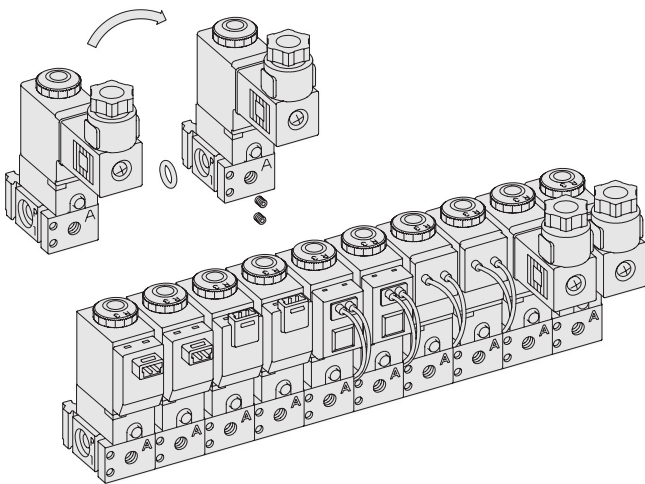
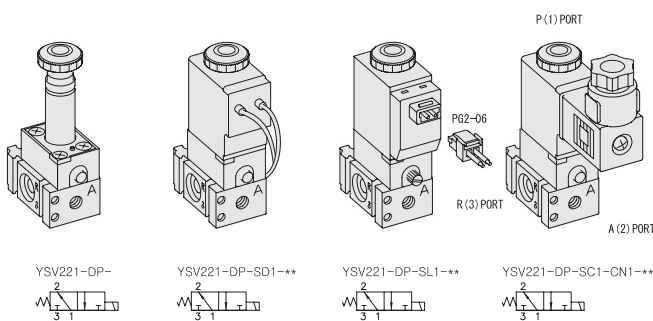
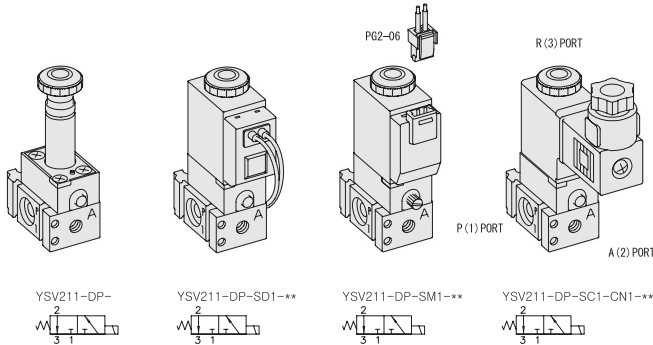
# YSV200. M5

Direct Actuated  
Staking Body Valves

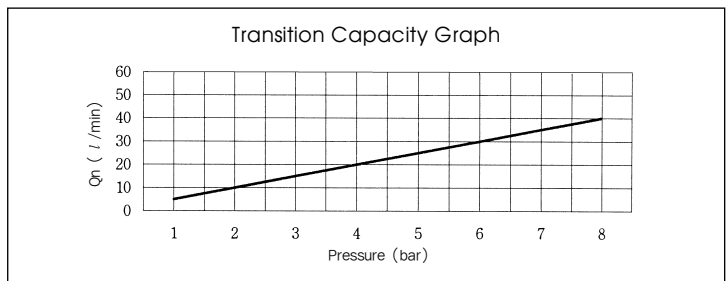
- 3/2- Direct Operation Type
- High Durability
- Orifice  $\varnothing$  1.1mm

## SPECIFICATION

ITEM	FUNCTION	YSV211	YSV221
		3/2-N.C	
Fluids		Compressed Air & Inert Gases	
Pressure(bar)		0~8.0	
Orifice(mm)		P = $\varnothing$ 1.1, R = $\varnothing$ 1.2	P = $\varnothing$ 1.2, R = $\varnothing$ 1.1
Ambient & Fluid Temp.		5~60°C (41~140°F)	
Response Time(5bar)		20ms or Less	
Max. Working Frequency		8c/sec	
Lubrication		Not Required(Use ISO VG32 #)	
Manual Override		Push Button(Standard), Lever Lock(Optional)	
Coil Insulation Class		F-Class or Equivalent	
Permissible Voltage Variation		$\pm$ 10% of Rated Voltage	
Off Min. Residual Voltage		AC:20% or Less / DC:10% or Less	
Power Consumption		AC:3.5VA(60Hz) / DC:2.5W	



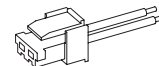
\*\* : Voltage Selection (see page 80)



### The Material of Parts

- Valve Body : Aluminium
- Pilot Parts : Glass Filled Nylon
- Pilot Plate : Zinc Pressure Die-Cast
- Spring : Stainless
- Seals : NBR
- Armature : Stainless Steel
- Armature Seals : Viton

### Plug Connector With Clip



#### Ordering Code

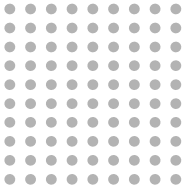
PG2-06 ( L : 600mm)  
PG2-10 ( L : 1,000mm)

\* The specification on each item can be amended without any prenotice to improve a performance.  
\* The specification on each item can be different from actual specification.

## ORDERING NO.

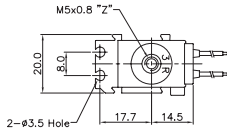
**YSV2 1 1 - D P - SC1 - CN1 - A2**

Valve Series	Function	Port Size & Thread	Pilot Source	Manual Operator	Solenoid Coil Type	Connector Type	Voltage
YSV2 : Solenoid Valve	1	1 M5x0.8	D Direct Operated	P Push Non-Locking Override	0 None	0 None	0 None
	2	2 10-32 UNF		L LeverLocking Override	SC1 3 Pin Connector Coil	CN1 Normal Connector	A2 AC 220V
					SG1 Grommet/Flying Leads	CD1 Connector With LED	A1 AC 110V
					SD1 Grommet/Flying Leads With LED	CZ1 Connector With LED & Surge Suppressor	A4 AC 24V
					SL1 90 Degree Plug-in Wire Assembly with LED		D4 DC 24V
					SM1 180 Degree Plug-in Wire Assembly with LED		D2 DC 12V

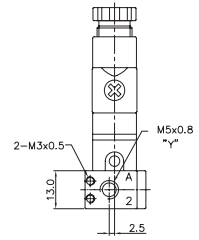
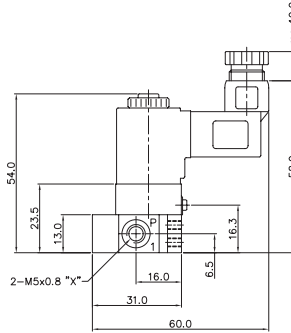
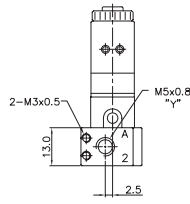
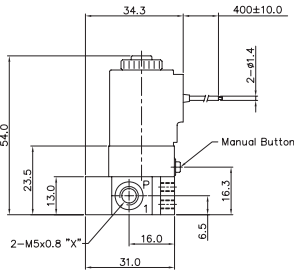
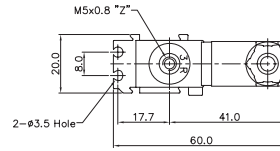


# Direct Solenoid Actuated Valves

Port Thread **M5 × 0.8**



PORT	TYPE	N.C	N.O
X		P(1)	R(3)
Y		A(2)	A(2)
Z		R(3)	P(1)

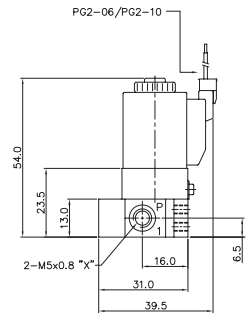
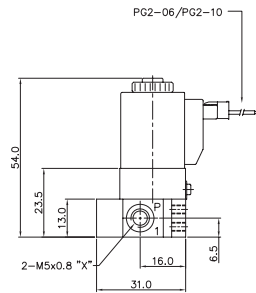
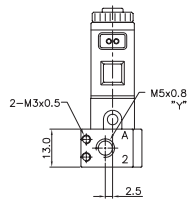
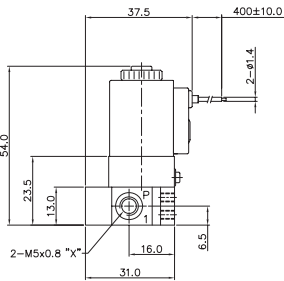
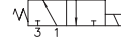
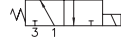
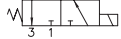


YSV211-DP-SG1-\*\*\*  
Normally Closed

YSV221-DP-SG1-\*\*\*  
Normally Open

YSV211-DP-SC1-CN1-\*\*\*  
Normally Closed

YSV221-DP-SC1-CN1-\*\*\*  
Normally Open



YSV211-DP-SD1-\*\*\*  
Normally Closed

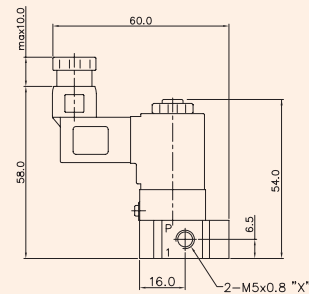
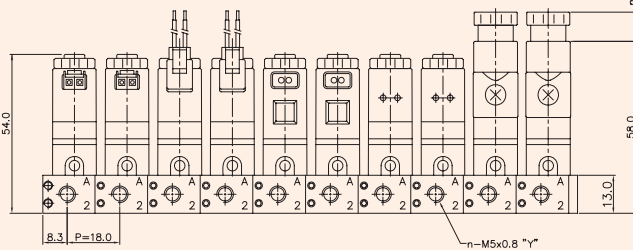
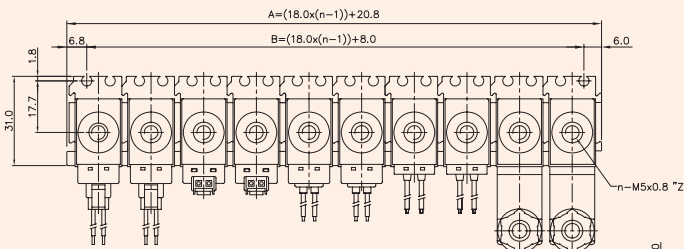
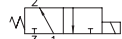
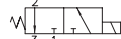
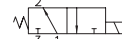
YSV221-DP-SD1-\*\*\*  
Normally Open

YSV211-DP-SL1-\*\*\*  
Normally Closed

YSV221-DP-SL1-\*\*\*  
Normally Open

YSV211-DP-SM1-\*\*\*  
Normally Closed

YSV221-DP-SM1-\*\*\*  
Normally Open



**A, B = DIMENSIONS**

n = STATION

ITEM	n	2	3	4	5	6	7	8	9	10
A		38.8	56.8	74.8	92.8	110.8	128.8	146.8	164.8	182.8
B		26.0	44.0	62.0	80.0	98.0	116.0	134.0	152.0	170.0