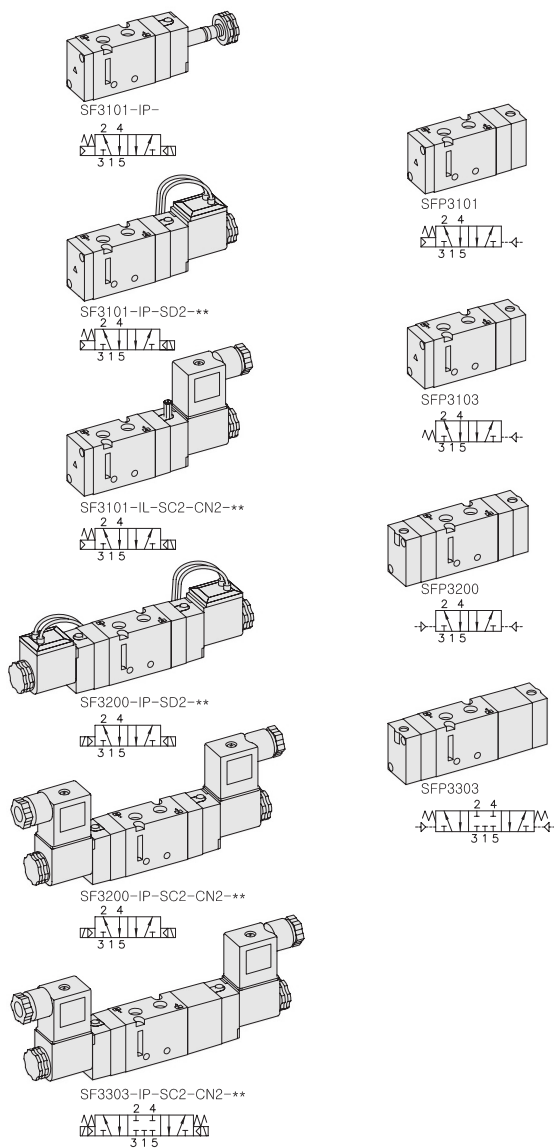


SF3000. 1/8

"F" FLEXIBLE Series
Solenoid / Pneumatic Valves

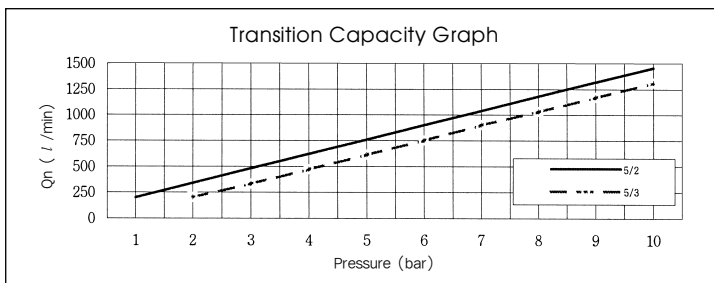
- 5/2, 5/3 - 1/8
- 23mm Body Width
- Transition Flow 760ℓ/min (5bar)



** : Voltage Selection (see page 80)

SPECIFICATION

ITEM	SERIES	SOLENOID, PNEUMATIC	
		FUNCTION	
		5 Port 2 Position	5 Port 3 Position
Fluids		Compressed Air & Inert Gases	
Pressure(bar)		1.5~10.0	2.0~10.0
Eff. Section Area(mm ²)-5bar		13.5	11.0
Ambient & Fluid Temp.		5~60°C (41~140°F)	
Response Time(5bar)		25ms or Less	35ms or Less
Max. Working Frequency		5c/sec	3c/sec
Lubrication		Not Required(Use ISO VG32 #)	
Manual Override		Push Button(Standard), Lever Lock(Option)	
Coil Insulation Class		F-Class or Equivalent	
Permissible Voltage Variation		±10% of Rated Voltage	
Off Min. Residual Voltage		AC:20% or Less / DC:10% or Less	
Power Consumption		Holding-AC:5.5VA(60Hz) / DC:2.5W	



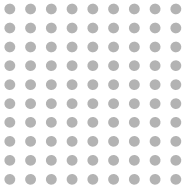
- ### The Material of Parts
- Valve Body : Die-Cast Aluminium
 - Spool : Aluminium
 - Seals : NBR
 - Spring : Stainless
 - Cap : Zinc Pressure Die-Cast
 - Pilot Parts : Glass Filled Nylon
 - Armature : Stainless Steel
 - Armature Seals : Viton

* The specification on each item can be amended without any prenotice to improve a performance.
* The specification on each item can be different from actual specification.

ORDERING NO.

SF3 1 0 1 - I P - SC2 - CN2 - A2

Valve Series	Function	Port Size & Thread	Return Method	Int/Ext. Pilot	Manual Operator	Solenoid Coil Type	Connector Type	Voltage
SF3 : Solenoid Valve	1 5/2 Single	0 G 1/8	0 None	I Internal Pilot	O None	O None	O None	O None
	2 5/2 Double	1 NPT 1/8	1 Air + Spring		P Push	SC2 3 Pin Connector Coil	CN2 Normal Connector	A2 AC 220V
	3 5/3 Closed Center		2 Air			SG2 Grommet/Flying Leads	CD2 Connector With LED	A1 AC 110V
	4 5/3 Open Center		3 Spring		L Lever Locking	SD2 Grommet/Flying Leads With LED	C22 Connector With LED & Surge Suppressor	A4 AC 24V D4 DC 24V D2 DC 12V
SFP3 : Pneumatic Valve	5 5/3 Pressure Center							

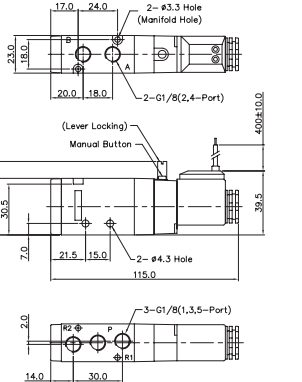
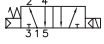


Solenoid & Pilot Actuated Spool Valves

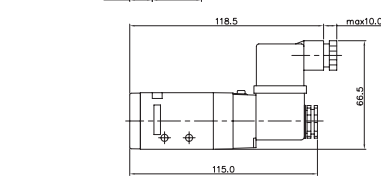
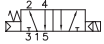
Port Thread 1/8

5Port 2Position Solenoid Valve

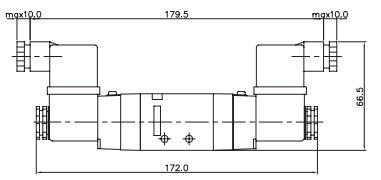
Single Solenoid
SF3101-IP-SD2-***



SF3101-IP-SC2-CN2-***

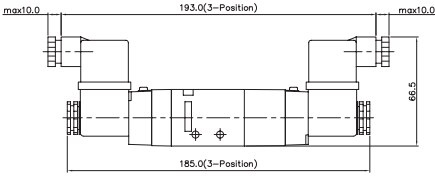
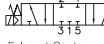


Double Solenoid
SF3200-IP-SC2-CN2-***

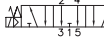


5Port 3Position Solenoid Valve

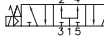
Closed Center
SF3303-IP-SC2-CN2-***



Exhaust Center
SF3403-IP-SC2-CN2-***

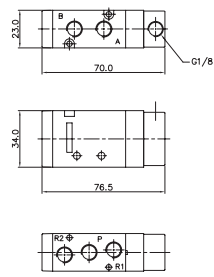
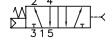


Pressure Center
SF3503-IP-SC2-CN2-***

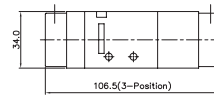
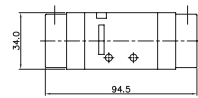
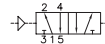


5Port 2Position Pneumatic Valve

Single Pneumatic
SFP3101



Double Pneumatic
SFP3200



5Port 3Position Pneumatic Valve

Closed Center
SFP3303



Exhaust Center
SFP3403



Pressure Center
SFP3503



Manifold Block Ordering Code

MF 3500 - 2

Series	Manifold Station
MF3500 5 Way	02 2-Station
	04 4-Station
	06 6-Station
	08 8-Station
	10 10-Station

Blanking Plate Ordering Code

MF3500-BLK

Blanking Plate.
(Material: SCP1)

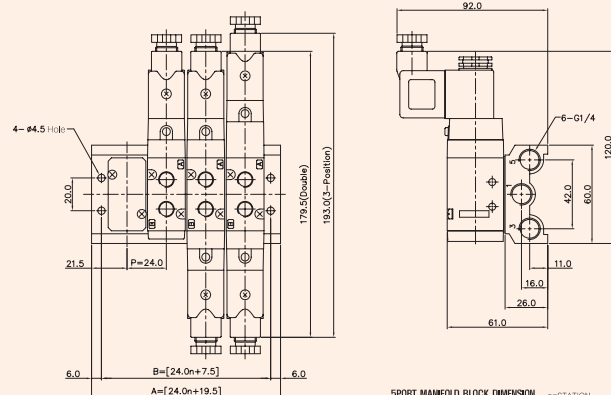
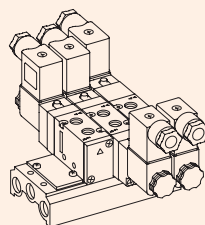
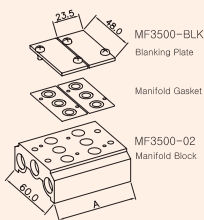
Manifold Gasket.
(Material: NBR)

MF3000 MANIFOLD BLOCK

(SF3000 Solenoid & Pneumatic Valve Use)

5-Port Manifold Block

MF3500-4



SPORT MANIFOLD BLOCK DIMENSION						n=STATION
ITEM	2	4	6	8	10	
B	55.5	103.5	151.5	199.5	247.5	
A	67.5	115.5	163.5	211.5	259.5	