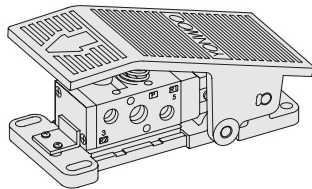


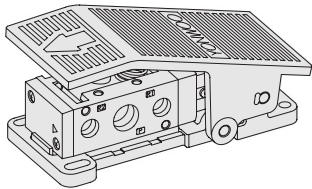
FT Series

Foot Treadle Operated
Air Return & Spring Return Spool Valves

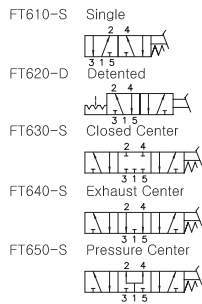
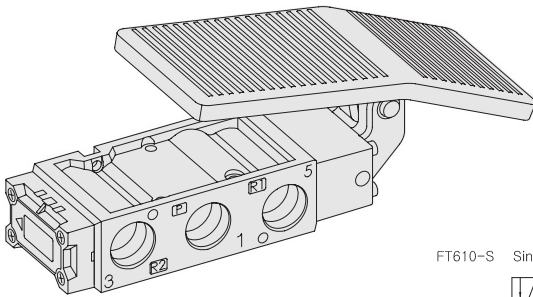
- 5/2, 5/3
- Pilot Type - 1/4, 3/8
- Direct Operation Type - 1/2
- Excellent Durability



FT410-S
2 4
3 1 5

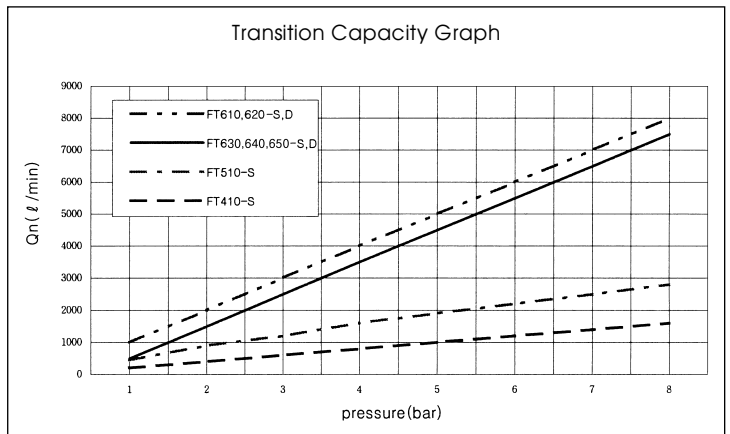


FT510-S
2 4
3 1 5



SPECIFICATION

ITEM	SERIES	FT410-S	FT510-S	FT600-S, D
	FUNCTION	5/2-Way		5/2, 5/3-Way
Fluids	Compressed Air & Inert Gases			
Port Size		1/4	3/8	1/2
Pressure(bar)		1.5~8.0		0~8.0
Eff. Sectional Area(mm ²)-5bar		19.0	35.0	90.0
Ambient & Fluid Temp.	5~60°C (41~140°F)			
Lubrication	Not Required(Use ISO VG32#)			



The Material of Parts

- Valve Body : Die-Cast Aluminium
- Spool : Aluminium
- Seals : NBR
- Spring : Stainless
- Cap : Zinc Pressure Die-Cast
- Pilot parts : Glass Filled Nylon
- Foot Upper Plate : Die-Cast Aluminium
- Foot Low Plate : Zinc Pressure Die-Cast

* The specification on each item can be amended without any prenotice to improve a performance.
* The specification on each item can be different from actual specification.

ORDERING NO.

FT4 1 0 - S

Valve Series

FT4 :
1/4-Port Body
FT5 :
3/8-Port Body
FT6 :
1/2-Port Body

Function

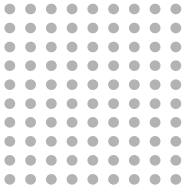
1	5/2 Single
2	5/2 Double
3	5/3 Closed Center
4	5/3 Open Center
5	5/3 Pressure Center

Port Size & Thread

0	G
1	NPT

Return Method

S	Spring Return
D	Detented

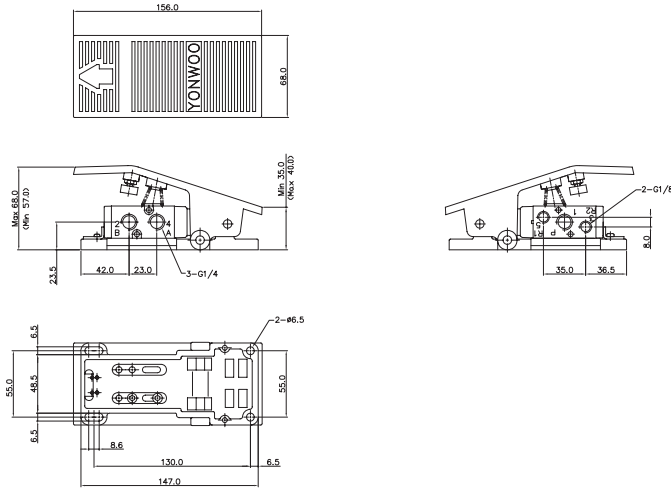
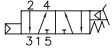


Foot Treadle Operated Spool Valves

Port Thread 1/4, 3/8, 1/2

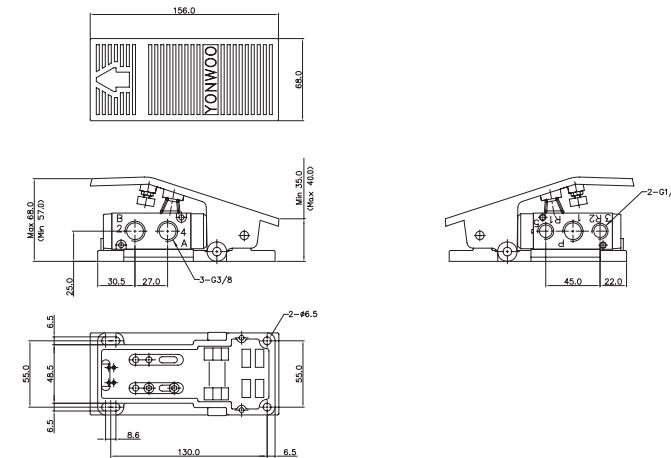
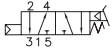
5/2-Way, Foot Valve, Air Return Operation Thread-G1/4

FT410-S



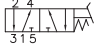
5/2-Way, Foot Valve, Air Return Operation Thread-G3/8

FT510-S

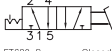


5/2-Way, Foot Valve, Spring Return & Detented Operation Thread-G1/2

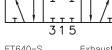
FT610-S



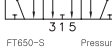
FT620-D



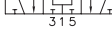
FT630-S



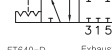
FT640-S



FT650-S



FT630-D



FT640-D



FT650-D

