



Perfectly balanced
room comfort.

Pressure-independent zone valve PIQCV

The PIQCV (Pressure Independent Quick Compact Valve) from the Belimo ZoneTight™ product family is a pressure-independent characterised control valve which permanently supplies all heating and cooling elements with precisely the amount of water needed.

The advantages:

- Ideal room comfort is achieved as the optimum amount of water is supplied to the end devices
- High energy efficiency thanks to the low differential pressure required
- Less planning work thanks to fast and reliable valve selection
- Time saving by the automatic and permanent hydraulic balancing
- Flexible, diverse installation options thanks to compact design

Compact, flexible and efficient.

Versatile fields of application

- Fan coil
- Zone air heater and cooler
- Cooling ceilings and cooling beams

Pressure-independent flow rate regulation

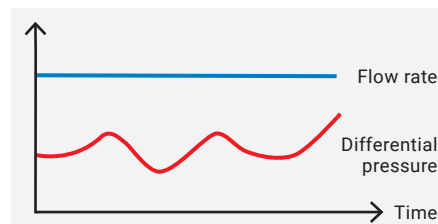
- Correct water quantity is assured despite differential pressure changes and in partial load operation.
- Time-consuming, manual hydraulic system balancing is not needed.
- Desired V_{max} value with associated clip can be adjusted simply and rapidly on the actuator.

Verification and pump optimisation

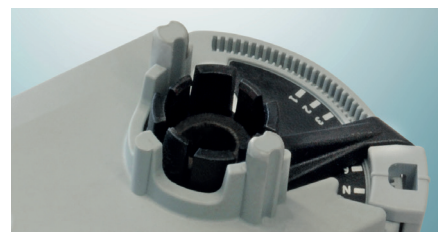
- Two optional measuring ports for differential pressure measurement through the valve.
- Correct water quantity guaranteed during operation within the specified differential pressure range (16...350 kPa).
- Pump performance can be reduced to the point that only the minimum required (and comparatively low) differential pressure is present above the valve in the index circuit.

Practical, power-saving actuator

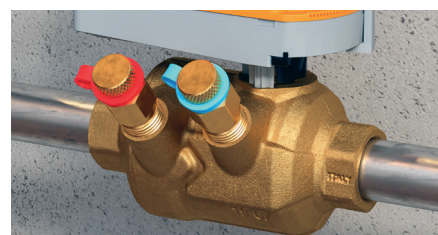
- Compact plug-in actuator (installation dimension without valve: L/W/H 104 x 46 x 54 mm)
- Open-close and 3-point (AC/DC 24 V and AC 230 V)
- Modulating actuation (2...10 V, AC/DC 24 V)
- Also available as communicative version (MP-Bus, BACnet, Modbus) and fail-safe version



Correct water quantity is assured.



V_{max} value can be adjusted with Clip.



Measuring ports for differential pressure.

Type	Nominal width (DN)	V_{nom} (l/h)	Adjustable maximum flow rate (V_{max} [l/h])	Measuring ports
C215QP-B	15	210	20...210	no
C215QPT-B	15	210	20...210	yes
C215QP-D	15	420	44...420	no
C215QPT-D	15	420	44...420	yes
C220QP-F	20	980	90...980	no
C220QPT-F	20	980	90...980	yes
C225QPT-G	25	2100	260...2100	yes

System pressure (ps) 1600 kPa, medium temperature 2°C...90°C.

BELIMO Automation AG

Brunnenbachstrasse 1, 8340 Hinwil, Schweiz
Tel. + 41 43 843 61 11, info@belimo.ch, www.belimo.com

