

## Applications

- One touch type pipe connection tool for air pressure piping.
- Various uses depending on the user's environment.

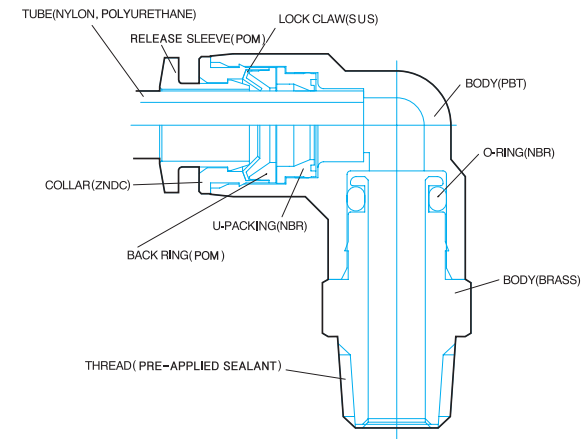
## Features

- One action inserts the tube to release and connect easily.
- The PC type has interior and exterior hexagonal shapes for efficient piping in limited spaces.
- The main body of the PL and PT types is a rotating structure for efficient piping.
- The screw section has O-ring, or Teflon coated.

## Specifications

- Fluid type : Air (No other gases or liquids)
- Working pressure : 0~150PSI / 0~9.9Kgf/cm<sup>2</sup> (0~990kPa)
- Negative pressure : -29.5 in Hg / -750mmHg (-750Torr)
- Working temperature : 32~140° F / 0~60° C
- Applicable Tube : Polyurethane and Nylon

## Structural Diagram



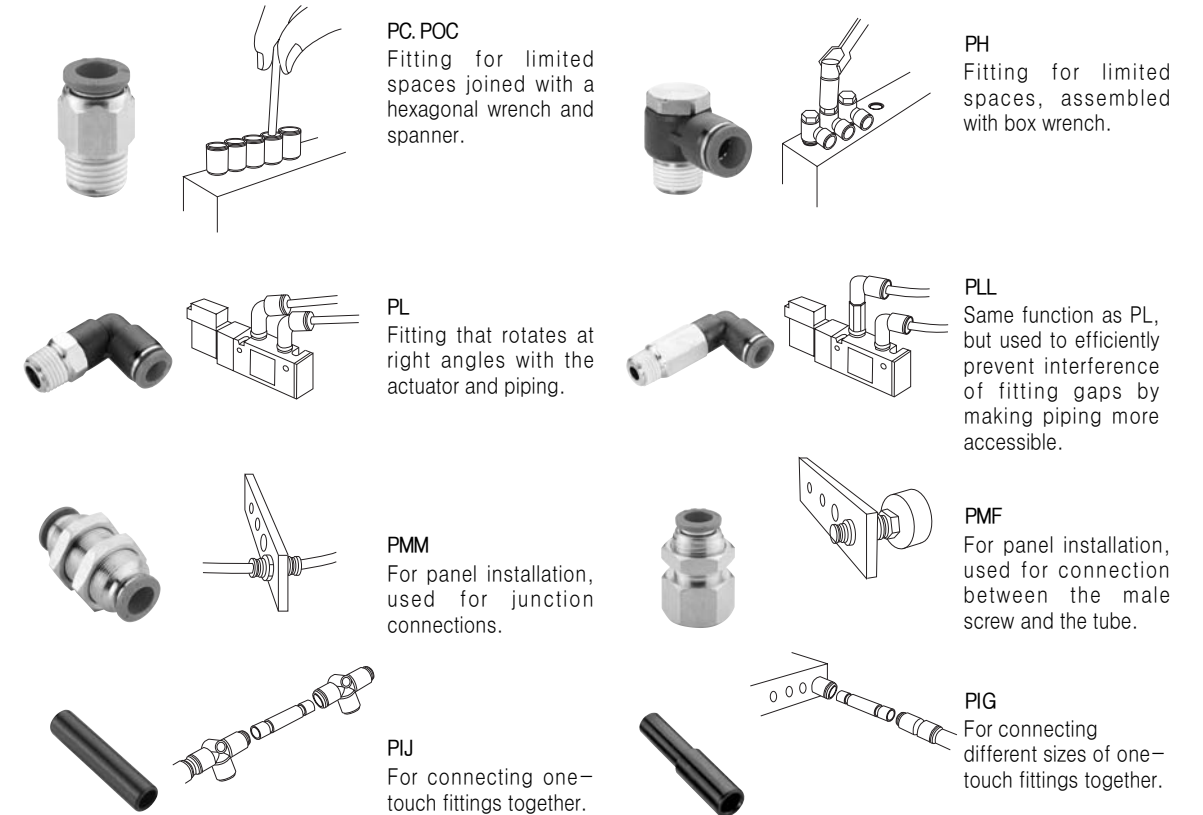
## Conversion

kgf/cm <sup>2</sup>	bar	Pa(N/m <sup>2</sup> )	atm	mHg	lbf/in <sup>2</sup>
1	0.980665	0.980665E5	0.9678	0.7356	14.22
1.0197	1	1E-5	0.9869	0.7501	14.50
1.0197E-5	1E-5	1	0.9869E-5	7.501E-6	1.450E-4
1.0332	1.0325	1.0325E5	1	0.760	14.70
1.3595	1.3332	1.3332E5	1.3158	1	19.34
0.07031	0.06895	6.895E3	0.06805	0.05171	1

## Applied example

- The interior and exterior hexagonal part can be assembled using a spanner and hexagonal wrench in screw joining.
- The injection body of the PL and PT models rotates to allow direction changes according to piping direction.
- The sleeve is circular so that it is free of equipment setting.

## Form



## Product Code System

### METRIC - BSPT(R)

#### PC 06-01-N

OneTouch Fitting	Tube Dia		Thread Size		Plating	Sleeve Color
	CODE	SIZE	METRIC THREAD			
	04	Ø4	M5	M5×0.8	Nickel	Blue
	06	Ø6	M6	M6×1.0		
	08	Ø8	R(P/T) THREAD			
	10	Ø10				
	12	Ø12				
	16	Ø16	01	R1/8		
			02	R1/4		
			03	R3/8		
			04	R1/2		

### METRIC - BSPP(G)

#### PC 06-G01

OneTouch Fitting	Tube Dia		Thread Size		Sleeve Color
	CODE	SIZE	METRIC THREAD		
	04	Ø4	M5	M5×0.8	Blue
	06	Ø6	M6	M6×1.0	
	08	Ø8	G(P/F) THREAD		
	10	Ø10			
	12	Ø12			
	16	Ø16	G01	G1/8	
			G02	G1/4	
			G03	G3/8	
			G04	G1/2	

### INCH - BSPT(R)

#### PC-1/4-01

OneTouch Fitting	Tube Dia		Thread Size	
	CODE	SIZE	R(P/T) THREAD	
	5/32	Ø5/32	01	R1/8
	3/16	Ø3/16	02	R1/4
	1/4	Ø1/4	03	R3/8
	5/16	Ø5/16	04	R1/2
	3/8	Ø3/8		
	1/2	Ø1/2		

### INCH - NPT

#### PC-1/4-N1

OneTouch Fitting	Tube Dia		Thread Size	
	CODE	SIZE	UNF THREAD	
	5/32	Ø5/32	U	10-32UNF
	3/16	Ø3/16	NPT THREAD	
	1/4	Ø1/4		
	5/16	Ø5/16	N1	NPT1/8
	3/8	Ø3/8	N2	NPT1/4
	1/2	Ø1/2	N3	NPT3/8
			N4	NPT1/2

## CAUTION

- Be sure to refer to the Safety Caution, Classification of Warning Indications (P7), and Common Caution of Fitting Products (P8) before use.
- Assemble the fitting according to the proper connection torque value (P7).
- Proper torque refers to connection by hand and 2~3 rotations using a tool. Excessive pressure may damage the screw.
- To insert the tube into the fitting, cut the tube at a right angle, insert it fully to the end, and pull the tube gently to make sure it isn't released.
- Avoid piping under tension, and also avoid high curvature piping at the tube insertion section of the fitting.

## WARNING

- Be sure to prevent pressure buildup due to twisting, pulling, and bending of the fitting product. This may cause product damage or air leakage.
- When the applied fluid is water, do not use the product if it does not meet all specifications. Fitting damage, tube release, and compressed air leakage may occur.

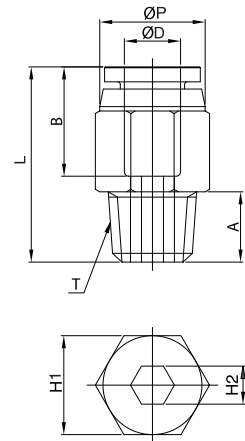
# Rechte inschroeffkoppeling O-ring

# PC



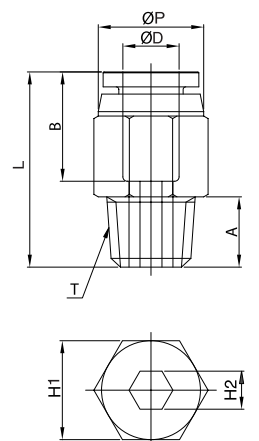
## METRIC-BSPT(R)

MODEL	ØD	ØP	T	L	A	B	H1(Hex)	H2(Hex)	ORIFICE	WEIGHT(g)	BOX(EA)
PC 04-M5	4	10.0	M5×0.8p	21.9	4.6	15.9	10	-	2.5	5.8	100
PC 04-M6			M6×1.0p	21.9	4.1		10	-	3.0	5.8	100
PC 04-01			R 1/8	21.6	8		14	3	3.0	7.8	100
PC 04-02			R 1/4	20.6	10		14	3	3.0	14.8	100
PC 04-03			R 3/8	22.0	11		17	3	3.0	26.8	100
PC 06-M5	6	12.0	M5×0.8p	23.6	4.6	16.5	12	-	2.5	8.8	100
PC 06-M6			M6×1.0p	23.1	4.1		12	-	3.0	8.8	100
PC 06-01			R 1/8	22.2	8		12	4	4.0	8.8	100
PC 06-02			R 1/4	21.0	10		14	5	5.0	12.8	100
PC 06-03			R 3/8	22.0	11		17	5	5.0	25.8	100
PC 06-04	R 1/2	29.3	14	19	5	5.0	49.8	50			
PC 08-01	8	14.0	R 1/8	27.5	8	17.7	14	5	5.0	14.7	100
PC 08-02			R 1/4	25.5	10		14	6	6.0	18.7	100
PC 08-03			R 3/8	23.0	11		17	6	6.0	21.7	100
PC 08-04			R 1/2	29.7	14		19	6	6.0	49.7	50
PC 10-01			10	16.1	R 1/8		28.7	8	18.6	17	5
PC 10-02	R 1/4	30.7			10	17	6	6.0		24.5	100
PC 10-03	R 3/8	24.7			11	17	8	8.0		41.5	100
PC 10-04	R 1/2	29.7			14	19	8	8.0		51.5	50
PC 12-01	12	19.0			R 1/8	32.3	8	20.9		19	5
PC 12-02			R 1/4	32.8	10	19	6		6.0	36.3	50
PC 12-03			R 3/8	29.8	11	19	8		8.0	30.3	50
PC 12-04			R 1/2	29.8	14	19	8		8.0	48.3	50
PC 16-03			16	24.0	R 3/8	37.3	11		24.8	24	10
PC 16-04	R 1/2	40.3			14	24	10	10.0		63.0	25



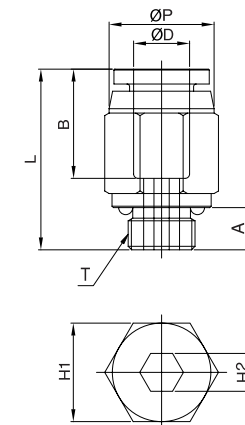
## INCH-NPT

MODEL	ØD	ØP	T	L	A	B	H1(Hex)	H2(Hex)	ORIFICE	WEIGHT(g)	BOX(EA)
PC 5/32-U	5/32	10.5	UNF10/32	21.4	3.6	16.2	7/16	3/32	2.5	5.8	100
PC 5/32-N1			NPT1/8	19.5	8.5		7/16	1/8	3.2	7.8	100
PC 5/32-N2			NPT1/4	22.0	10.5		9/16	1/8	3.2	14.8	100
PC 5/32-N3			NPT3/8	23.0	11.5		11/16	1/8	3.2	24.8	100
PC 3/16-U	3/16	11.0	UNF10/32	22.0	3.6	16.8	7/16	3/32	2.5	7.8	100
PC 3/16-N1			NPT1/8	23.1	8.5		7/16	1/8	3.2	14.8	100
PC 3/16-N2			NPT1/4	23.1	10.5		9/16	1/8	3.2	24.8	100
PC 3/16-N3			NPT3/8	24.1	11.5		11/16	1/8	3.2	24.8	100
PC 1/4-U	1/4	12.7	UNF10/32	23.2	3.6	17.3	1/2	3/32	2.5	8.8	100
PC 1/4-N1			NPT1/8	23.8	8.5		1/2	3/16	4.0	8.8	100
PC 1/4-N2			NPT1/4	23.2	10.5		9/16	3/16	4.0	12.8	100
PC 1/4-N3			NPT3/8	24.2	11.5		11/16	3/16	4.0	23.8	100
PC 1/4-N4	NPT1/2	27.3	14.5	7/8	3/16	4.0	49.8	50			
PC 5/16-N1	5/16	14.0	NPT1/8	28.2	8.5	18.2	9/16	3/16	4.8	12.7	100
PC 5/16-N2			NPT1/4	26.0	10.5		9/16	1/4	6.4	14.7	100
PC 5/16-N3			NPT3/8	26.5	11.5		11/16	1/4	6.4	21.7	100
PC 5/16-N4			NPT1/2	24.5	14.5		7/8	1/4	6.4	59.7	50
PC 3/8-N1	3/8	16.7	NPT1/8	30.1	8.5	19.9	11/16	3/16	4.8	21.4	100
PC 3/8-N2			NPT1/4	31.1	10.5		11/16	1/4	6.4	25.4	100
PC 3/8-N3			NPT3/8	24.8	11.5		11/16	5/16	7.9	20.4	100
PC 3/8-N4			NPT1/2	24.0	14.5		7/8	5/16	7.9	50.4	50
PC 1/2-N1	1/2	20.6	NPT1/8	33.4	8.5	23.0	7/8	3/16	4.8	32.1	50
PC 1/2-N2			NPT1/4	35.4	10.5		7/8	1/4	6.4	35.1	50
PC 1/2-N3			NPT3/8	31.9	11.5		7/8	3/8	9.5	36.1	50
PC 1/2-N4			NPT1/2	31.4	14.5		7/8	3/8	9.5	46.1	50



## METRIC-BSPP(G)

MODEL	ØD	ØP	T	L	A	B	H1(Hex)	H2(Hex)	ORIFICE	WEIGHT(g)	BOX(EA)
PC 04-G01	4	10.3	G 1/8	21.5	5.0	15.9	13	3	3.0	10.8	100
PC 04-G02			G 1/4	23.5	6.5		15	3	3.0	18.8	100
PC 04-G03			G 3/8	23.5	6.5		17	3	3.0	21.8	100
PC 06-G01	6	12.3	G 1/8	22.5	5.0	16.5	13	4	4.0	9.8	100
PC 06-G02			G 1/4	24.5	6.5		15	5	5.0	16.8	100
PC 06-G03			G 3/8	25.5	6.5		17	5	5.0	23.8	100
PC 08-G01	8	14.3	G 1/8	26.7	5.0	17.7	15	5	5.0	16.7	100
PC 08-G02			G 1/4	26.7	6.5		15	6	6.0	14.7	100
PC 08-G03			G 3/8	25.0	6.5		17	6	6.0	22.7	100
PC 08-G04			G 1/2	26.0	8.0		21	6	6.0	39.7	50
PC 10-G01	10	16.5	G 1/8	29.5	5.0	18.6	17	5	5.0	21.5	100
PC 10-G02			G 1/4	30.0	6.5		17	6	6.0	22.5	100
PC 10-G03			G 3/8	27.0	6.5		17	8	8.0	21.5	100
PC 10-G04			G 1/2	28.3	8.0		21	8	8.0	36.5	50
PC 12-G02	12	19.0	G 1/4	32.2	6.5	20.9	19	6	6.0	26.3	50
PC 12-G03			G 3/8	31.6	6.5		19	8	8.0	22.3	50
PC 12-G04			G 1/2	31.6	8.0		21	8	8.0	36.3	50
PC 16-G03			16	24.0	G 3/8		36.3	6.5	24.8	24	10
PC 16-G04	G 1/2	36.3			8.0	24	10	10.0		59.0	25



## INCH-BSPT(R)

MODEL	ØD	ØP	T	L	A	B	H1(Hex)	H2(Hex)	ORIFICE	WEIGHT(g)	BOX(EA)
PC1/4-01	1/4	12.7	R1/8	23.5	8.0	17.3	13	5	5.0	8.8	100
PC1/4-02			R1/4	22.9	10.0		14	5	5.0	12.8	100
PC1/4-03			R3/8	23.9	11.0		17	5	5.0	23.8	100
PC5/16-01	5/16	14.0	R1/8	27.5	8.5	18.2	14	5	5.0	14.7	100
PC5/16-02			R1/4	25.5	10.5		14	6	6.0	18.7	100
PC5/16-03			R3/8	23.0	11.5		17	6	6.0	21.7	100
PC3/8-01	3/8	16.7	R1/8	29.7	8.5	19.9	17	5	5.0	21.4	100
PC3/8-02			R1/4	30.5	10.5		17	6	6.0	25.4	100
PC3/8-03			R3/8	24.2	11.5		17	6	6.0	20.4	100
PC3/8-04			R1/2	27.2	14.5		21	8	8.0	50.4	50
PC1/2-02	1/2	20.6	R1/4	34.9	10.5	23.0	21	6	6.0	35.1	50
PC1/2-03			R3/8	31.9	11.5		21	10	10.0	36.1	50
PC1/2-04			R1/2	30.9	14.5		21	10	10.0	46.1	50

