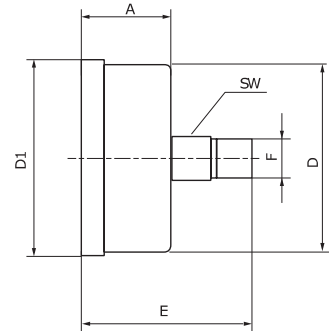
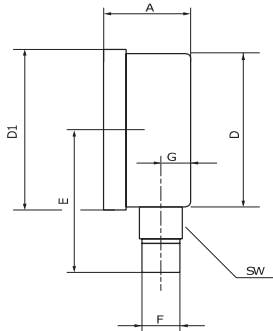


ML series

Glycerin Pressure Gauge Vertical/Horizontal Ø63mm Nickel Chromium Steel/Brass Class 1.6



Reference	Scale division (bar)	Display range (bar)	Vacuum	Reference	Scale division (bar)	Display range (bar)
ML-1063S**G	0.05	-1 – 0	Yes	ML0663S**G	0.2	0 – 6
ML-10P663S**G	0.05	-1 – 0.6	Yes	ML01063S**G	0.5	0 – 10
ML-11P563S**G	0.1	-1 – 1.5	Yes	ML01663S**G	0.5	0 – 16
ML-1363S**G	0.2	-1 – 3	Yes	ML02563S**G	1	0 – 25
ML-1563S**G	0.2	-1 – 5	Yes	ML04063S**G	2	0 – 40
ML-1963S**G	0.5	-1 – 9	Yes	ML06063S**G	2	0 – 60
ML-11563S**G	0.5	-1 – 15	Yes	ML010063S**G	5	0 – 100
ML00P663S**G	0.02	0 – 0.6		ML016063S**G	5	0 – 160
ML0163S**G	0.05	0 – 1		ML025063S**G	10	0 – 250
ML01P663S**G	0.05	0 – 1.6		ML040063S**G	20	0 – 400
ML02P563S**G	0.1	0 – 2.5		ML060063S**G	20	0 – 600
ML0463S**G	0.2	0 – 4		ML0100063S**G	50	0 – 1000

** - V – Vertical, H – Horizontal

Dimensions

Type	A	D	D1	E	F	G	SW
Vertical	30	62	68	60	1/4"	10	14
Horizontal	30	62	68	61	1/4"	10	14

ENGLISH

Materials:

Housing: 1.4301, Measuring system: Cu alloy, connection: Brass, window: polycarbonate

Connection thread:

G 1/4**

Class:

1.6

Temperature range:

Environment: -20°C to max. +60°C, measured material: max. +60°C

Dial:

1. Scale outside (black), display in bar, 2. scale inside (red), display in PSI

Protection class:

IP 65

*with centring pin for profiled seal

Commodity Code: 90262080

NEDERLANDS

Materialen:

Behuizing: 1.4301, meetsysteem: Cu-legering, aansluiting: Messing, kijkvenster: Polycarbonaat

Aansluit Schroefdraad:

G 1/4**

Klasse:

1.6

Temperatuurbereik:

Omgeving: -20 °C tot max. +60 °C, meetstof: max. +60 °C

Wijzerplaat:

1. Schaal buiten (zwart), weergave in bar, 2. Schaal binnen (rood), weergave in PSI

Beschermingsklasse:

IP 65

*met centreertap voor profielafdichtring

HKS Code: 90262080

DEUTSCH

Werkstoffe:

Gehäuse: 1.4301, Messsystem: Cu-Legierung, Anschluss: Messing, Sichtscheibe: Polycarbonat

Anschlussgewinde:

G 1/4**

Klasse:

1.6

Temperaturbereich:

Umgebung: -20°C bis max. +60°C, Messstoff: max. +60°C

Zifferblatt:

1. Skala außen (schwarz), Anzeige in bar, 2. Skala innen (rot), Anzeige in PSI

Schutzart:

IP 65

*mit Zentrierzapfen für Profildichtring

Zollwarennummer: 90262080

FRANÇAIS

Matériaux:

Boîtier: 1.4301, système de mesure: alliage de cuivre, raccord: laiton, fenêtre de contrôle: polycarbonate

Filetage de raccordement :

G 1/4**

Classe:

1.6

Plage de température:

Environnement: -20°C jusqu'à +60°C max., fluide mesuré: max. +60°C

Cadran:

1. Échelle périphérique (noire), affichage en bar 2. Échelle intérieure (rouge), affichage en PSI

Indice de protection:

IP 65

*avec broche de centrage pour bague d'étanchéité profilée

Numéro des marchandises en douane: 90262080