

BFL series

Butterfly valves, PN 10/16

Wafer type	Lug type	DN (mm)	Installation length (mm)
BFLW-25* ¹⁾		25	32
BFLW-32* ¹⁾	BFLL-32* ¹⁾	32	32
BFLW-40* ¹⁾	BFLL-40* ¹⁾	40	32
BFLW-50*	BFLL-50*	50	43
BFLW-65*	BFLL-65*	65	46
BFLW-80*	BFLL-80*	80	46
BFLW-100*	BFLL-100*	100	52
BFLW-125*	BFLL-125*	125	56
BFLW-150*	BFLL-150*	150	56
BFLW-200* ²⁾	BFLL-200* ²⁾	200	60
BFLW-250* ²⁾	BFLL-250* ²⁾	250	68
BFLW-300* ²⁾	BFLL-300* ²⁾	300	78

Table 1
 * please enter the desired combination of materials using the corresponding material code numbers (Table 2).
 1) Not available in material combination AAA.
 2) Housing material GG25 is supplied with flange connection PN 10.



- | | | | |
|---|---|---|---|
| Housing material | | Sealing material | |
| GG25 (standard, compressed air up to 6 bar) | A | EPDM (-10°C to max. +110°C) | A |
| GGG40 (higher pressures and temperatures) | B | NBR (+5°C to max. +85°C) | B |
| Stainless steel (aggressive environment) | C | FKM (+5°C to max. +180°C) | C |
| | | EPDM white (+8°C to max. +80°C) | D |
| | | Hypalon (+5°C to max. +90°C) | E |
| Disc material | | Silicone (-10°C to max. +200°C) | F |
| GGG40 polyamide coated (standard) | A | NBR contains carboxyl (+5°C to max. +110°C) | G |
| Stainless steel (water, abrasive media, food products) | B | PTFE / EPDM (+5°C to max. +110°C) | H |
| Aluminium / bronze (sea water) | C | PTFE / silicone (-40°C to max. +200°C) | I |
| GG25 epoxy coated (water) | D | | |
| Halar coated stainless steel (chemicals, pharmaceuticals) | E | | |
| Highly polished stainless steel (chemicals, pharmaceuticals, food products) | F | | |

Housing material			PN acc. PED 97/23/CE, bar						Field of use
			Group 2 (non-hazardous)			Group 1 (dangerous fluids)			
GG25	GGG40	Stainless steel	BFLW - Liquid	BFLW - Gases	BFLL - Liquid	BFLW - Liquid	BFLW - Gases	BFLL - Liquid	
AAA	BAA	CAA	16	10 ²⁾	12 ³⁾	16 ³⁾		12 ⁴⁾	General & industrial Application (mineral oil free)
AAB ⁷⁾	BAB	CAB	16	10 ²⁾	12 ⁵⁾	16 ³⁾		12 ⁴⁾	General & industrial Application (containing mineral oil), raw water
AAG	BAG	CAG	10	10 ²⁾	6	10		6	Abrasive media (powdered)
ABA*	BBA*	CBA	16	10 ²⁾	12 ⁴⁾	16 ³⁾		12 ⁴⁾	Drinking water, swimming pool water
ABB	BBB	CBB	16	10 ²⁾	12 ⁵⁾	16 ⁵⁾		12 ⁴⁾	General & industrial Application (containing mineral oil), hydrocarbons
ABC ⁸⁾	BBC	CBC	10	10 ²⁾	6	10	10 ²⁾	6	Hot, dry air or gas, special media
ABD	BBD	CBD	10	10 ²⁾	6	10		6	Industrial applications
ABE	BBE	CBE	16	10 ²⁾	12 ⁵⁾	16	10 ²⁾	12 ⁶⁾	Lightly loaded industrial media
ABF	BBF	CBF	10 ¹⁾	10 ¹⁾	6 ⁵⁾	10 ¹⁾	10 ¹⁾	6 ⁵⁾	Hot, dry air or gas, special media
ABG	BBG	CBG	10	10 ²⁾	6	10		6	Abrasive media (powdered)
	BBH		10 ¹⁾	10 ¹⁾	6 ⁵⁾	10 ¹⁾	10 ¹⁾	6 ⁵⁾	Food, beverages, pharmaceutical and cosmetic media
	BBI		10	10	6	10	10	6	Chemical liquids, food industry
ACA	BCA	CCA	16	10 ²⁾	12 ⁴⁾	16 ³⁾		12 ⁴⁾	General & industrial Application (mineral oil free), swimming pool water
ACB	BCB	CCB	16	10 ²⁾	12 ⁵⁾	16 ³⁾		12 ⁴⁾	Seawater, shipyards
ADA	BDA	CDA	16	10 ²⁾	12 ⁴⁾	16 ³⁾		12 ⁴⁾	Raw water
ADB	BDB	CDB	16	10 ²⁾	12 ⁵⁾	16 ³⁾		12 ⁴⁾	Raw water

Table 2
 Red font - Preferred type, especially fast deliverable
 1) DN>150: 6 bar, 2) DN>150: 8 bar, 3) DN>125: 10 bar, 4) DN>125: 6 bar, 5) DN>150: 4 bar, 6) DN>150: 10 bar, 7) only available from DN 50, 8) Type BLFI only available from DN65, * DVGW drinking water. Note: DN=25: 10bar and DN>150 (BWLW): PN=10

ENGLISH

Media:
Liquid and gaseous neutral media
(depending on the material combination).

Lengths:
DIN 3202 T3 K1, ISO 5752-Series 20, NF
EN 558-1-Series 20, BS 5155 Table 6
column 4, API 609 Table 1.

Optional:
Hand wheel gear -W, hand lever with
detend from composite material (up to DN
150) -H.

Commodity Code: 8481808190

NEDERLANDS

Media:
Vloeibare en gasvormige neutrale media
(afhankelijk van materiaalcombinatie).

Langtes:
DIN 3202 T3 K1, ISO 5752-serie 20, NF
EN 558-1-serie 20, BS 5155 Tabel 6
Kolom 4, API 609 Tabel 1.

Optioneel:
Handwielaandrijving -W,
Roosterhandhendel van
composietmateriaal (tot DN 150) -H.

HS Code: 8481808190

DEUTSCH

Medien:
Flüssige und gasförmige, neutrale Medien
(je nach Materialkombination).

Baulängen:
DIN 3202 T3 K1, ISO 5752-Serie 20, NF
EN 558-1-Serie 20, BS 5155 Tabelle 6
Spalte 4, API 609 Tabelle 1.

Optional:
Handradgetriebe -W, Rasterhandhebel aus
Verbundwerkstoff (bis DN 150) -H.

Zollwarennummer: 8481808190

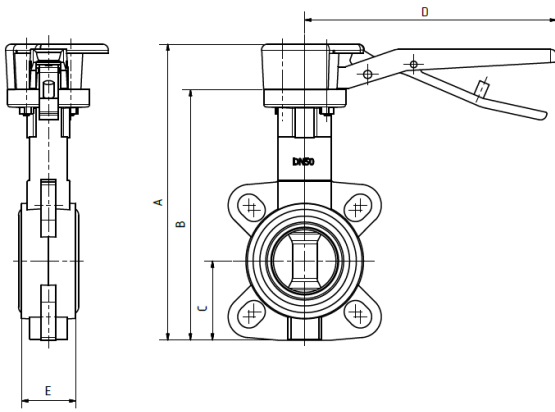
FRANÇAIS

Fluides:
Produits neutres à l'état liquide et gazeux
(selon la combinaison de matériaux).

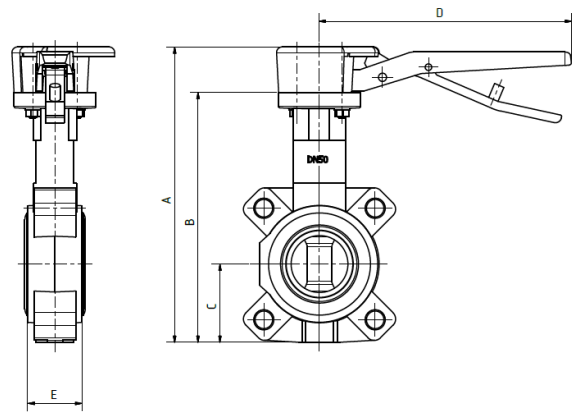
Longueurs de montage:
DIN 3202 T3 K1, ISO 5752 série 20, NF
EN 558-1 série 20, BS 5155 tableau 6
colonne 4, API 609 tableau 1.

En option:
Entraînement à volant de commande -W,
levier à cran d'arrêt en matériau composite
(jusqu'à DN 150) -H.

Numéro des marchandises en douane:
8481808190



Wafer type



Lug type

DN	A	B	C	D	E	ISO Type	Square type [mm]	Weight (kg)				
								Wafer type (Housing material)			Lug type (Housing material)	
								GG25	GGG40	Stainless steel	GG25	GGG40
25	210	175	50	200	32	F 05	11	2.5	2.5			
32/40	220	187	57	200	32	F 05	11	2.6	2.6	2.6	2.8	2.8
50	232	199	63	200	43	F 05	11	3.4	3.4	3.5	3.4	3.4
65	249	216	71	200	46	F 05	11	3.8	3.6	4	3.6	3.6
80	274	241	90	200	46	F 05	11	4.1	3.7	4.1	3.7 ⁴⁾	3.7
100	315	282	107	290	52	F 07	14	6.1	5.8	6.2	5.8 ⁵⁾	5.8
125	343	310	120	290	56	F 07	14	7.4	7.3	7.7	7.3	7.3
150	370	335	132	290	56	F 07	14	8.4	8.2	9.2	8.2	8.2 ⁶⁾
200	454	411	165	450	60	F 10	17	16.7 ¹⁾	18.4 ²⁾	16.5	18.4	18.4
250	515	472	201	450	68	F 10	22	23.1	22 ³⁾	23.5	22	22
300	576	532	236	450	78	F 12	22	32.8	33.8	32.8	33.8	33.8

Table 3

1) Option -W: 22.2kg; 2) Option -W: 23.9kg; 3) Option -W: 27.5kg; 4) Option -W: 5kg; 5) Option -W: 7.1kg; 6) Option -W: 15.6kg.

Flange	DN	G	D	L	Ø d	Number Ø d	Thickness flange
DIN*	25	68	115	85	18	4	14
PN 10 (up to DN 200)	32	78	140	100	18	4	18
PN 16	40	88	150	110	18	4	18
	50	102	165	125	18	4	18
	65	122	185	145	18	4	18
	80	138	200	160	18	8 (4**)	18
	100	158	220	180	18	8	18
	125	188	250	210	18	8	18
	150	212	285	240	22	8	22
	200	268	340	295	22	12 (8**)	22
	250	320	405	355	26	12	26
	300	378	460	410	26	12	26

Table 4

* DIN 2633, 2566 & 2642.

** Values in brackets apply to PN 10.

