

FLM - series

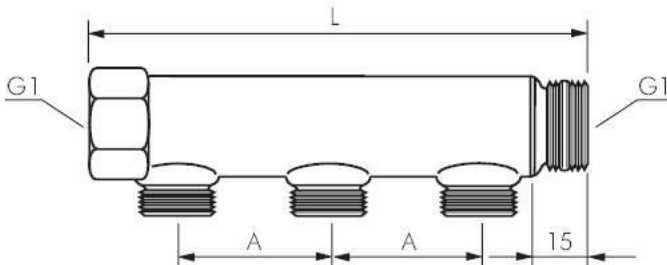
Distributor pipes with male and female threads, PN 10



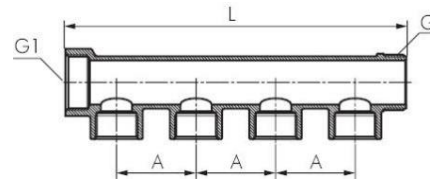
Reference	Material	Nominal inner/outer diameter connection G1 (inch)	Nominal inner diameter of offset – male (inch)	Nominal inner diameter of offset – female (inch)	Max pressure (bar)	Number of branches	Number of branching directions
FLM-FMM-B-034G-012G-2M	Brass	G 3/4	G 1/2		10	2	1
FLM-FMM-B-100G-012G-2M	Brass	G 1	G 1/2		10	2	1
FLM-FMM-B-114G-012G-2M	Brass	G 1 1/4	G 1/2		10	2	1
FLM-FMM-B-034G-012G-3M	Brass	G 3/4	G 1/2		10	3	1
FLM-FMM-B-100G-012G-3M	Brass	G 1	G 1/2		10	3	1
FLM-FMM-B-114G-012G-3M	Brass	G 1 1/4	G 1/2		10	3	1
FLM-FMM-B-034G-012G-4M	Brass	G 3/4	G 1/2		10	4	1
FLM-FMM-B-100G-012G-4M	Brass	G 1	G 1/2		10	4	1
FLM-FMM-B-114G-012G-4M	Brass	G 1 1/4	G 1/2		10	4	1
FLM-FMF-B-034G-012G-2M	Brass	G 3/4		G 1/2	10	2	1
FLM-FMF-B-100G-012G-2M	Brass	G 1		G 1/2	10	2	1
FLM-FMF-B-114G-012G-2M	Brass	G 1 1/4		G 1/2	10	2	1
FLM-FMF-B-034G-012G-3M	Brass	G 3/4		G 1/2	10	3	1
FLM-FMF-B-100G-012G-3M	Brass	G 1		G 1/2	10	3	1
FLM-FMF-B-114G-012G-3M	Brass	G 1 1/4		G 1/2	10	3	1
FLM-FMF-B-034G-012G-4M	Brass	G 3/4		G 1/2	10	4	1
FLM-FMF-B-100G-012G-4M	Brass	G 1		G 1/2	10	4	1
FLM-FMF-B-114G-012G-4M	Brass	G 1 1/4		G 1/2	10	4	1

Operating range: For the assembly of extraction points. The distributor may be extended as required since these are equipped with female and male threads.

Shape: Throughflow with straight branches



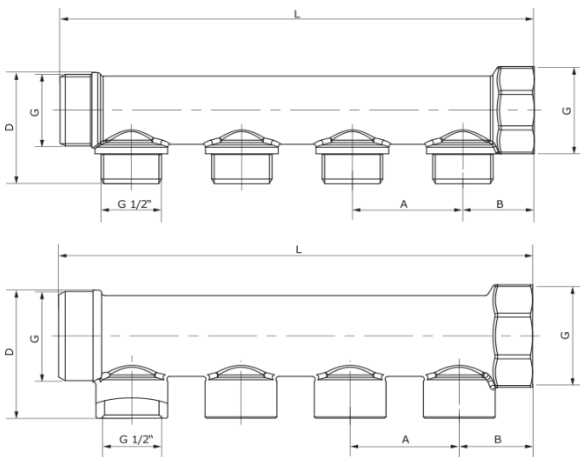
Reference	L (mm)	A (mm)
FLM-FMM-B-034G-012G-2M	110	50
FLM-FMM-B-100G-012G-2M	113	50
FLM-FMM-B-114G-012G-2M	137	60
FLM-FMM-B-034G-012G-3M	160	50
FLM-FMM-B-100G-012G-3M	163	50
FLM-FMM-B-114G-012G-3M	197	60
FLM-FMM-B-034G-012G-4M	210	50
FLM-FMM-B-100G-012G-4M	213	50
FLM-FMM-B-114G-012G-4M	257	60
FLM-FMF-B-034G-012G-2M	110	50
FLM-FMF-B-100G-012G-2M	113	50
FLM-FMF-B-114G-012G-2M	137	60
FLM-FMF-B-034G-012G-3M	160	50
FLM-FMF-B-100G-012G-3M	163	50
FLM-FMF-B-114G-012G-3M	197	60
FLM-FMF-B-034G-012G-4M	210	50
FLM-FMF-B-100G-012G-4M	213	50
FLM-FMF-B-114G-012G-4M	257	60



Reference	Material	Surface protection	Nominal inner / outer diameter connection G1 (inch)	Nominal inner diameter of offset – male (inch)	Nominal inner diameter of offset – female (inch)	Max pressure (bar)	Number of branches	Number of branching directions
FLM-FMM-BN-034G-012G-2M	Brass	Nickel-plated	G 3/4	G 1/2		10	2	1
FLM-FMM-BN-100G-012G-2M	Brass	Nickel-plated	G 1	G 1/2		10	2	1
FLM-FMM-BN-034G-012G-3M	Brass	Nickel-plated	G 3/4	G 1/2		10	3	1
FLM-FMM-BN-100G-012G-3M	Brass	Nickel-plated	G 1	G 1/2		10	3	1
FLM-FMM-BN-034G-012G-4M	Brass	Nickel-plated	G 3/4	G 1/2		10	4	1
FLM-FMM-BN-100G-012G-4M	Brass	Nickel-plated	G 1	G 1/2		10	4	1
FLM-FMF-BN-034G-012G-2M	Brass	Nickel-plated	G 3/4		G 1/2	10	2	1
FLM-FMF-BN-100G-012G-2M	Brass	Nickel-plated	G 1		G 1/2	10	2	1
FLM-FMF-BN-034G-012G-3M	Brass	Nickel-plated	G 3/4		G 1/2	10	3	1
FLM-FMF-BN-100G-012G-3M	Brass	Nickel-plated	G 1		G 1/2	10	3	1
FLM-FMF-BN-034G-012G-4M	Brass	Nickel-plated	G 3/4		G 1/2	10	4	1
FLM-FMF-BN-100G-012G-4M	Brass	Nickel-plated	G 1		G 1/2	10	4	1

Operating range: For the assembly of extraction points. The distributor may be extended as required since these are equipped with female and male threads.

Shape: Throughflow with straight branches



Reference	L (mm)	D (mm)	A (mm)	B (mm)
FLM-FMM-BN-034G-012G-2M	87	43	38	24.5
FLM-FMM-BN-100G-012G-2M	89	49.5	38	25.5
FLM-FMM-BN-034G-012G-3M	125	43	38	24.5
FLM-FMM-BN-100G-012G-3M	127	49.5	38	25.5
FLM-FMM-BN-034G-012G-4M	163	43	38	24.5
FLM-FMM-BN-100G-012G-4M	165	49.5	38	25.5
FLM-FMF-BN-034G-012G-2M	87	43	38	24.5
FLM-FMF-BN-100G-012G-2M	89	49.5	38	25.5
FLM-FMF-BN-034G-012G-3M	125	43	38	24.5
FLM-FMF-BN-100G-012G-3M	127	49.5	38	25.5
FLM-FMF-BN-034G-012G-4M	163	43	38	24.5
FLM-FMF-BN-100G-012G-4M	165	49.5	38	25.5