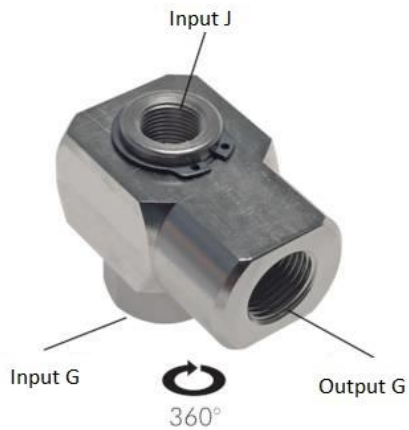
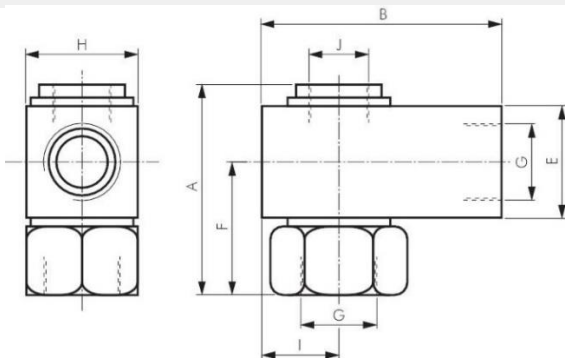


FL3-R - series

Rotary joints, 1-way, up to 550 rpm



Reference	Material	Seal	Nominal diameter of connection G (inch)	Nominal diameter of connection J (inch)	Max. number of revolutions (1/min)	Flow rate (l/min)	Suitable for vacuum
FL2E-F-BNU-018G-R	Brass, nickel-plated	Polyurethane (PUR)	G 1/8		550	425	No
FL2E-F-BNU-014G-R	Brass, nickel-plated	Polyurethane (PUR)	G 1/4		550	465	No
FL2E-F-BNU-018G-RV	Brass, nickel-plated	Polyurethane (PUR)	G 1/8		550	425	Yes
FL2E-F-BNU-014G-RV	Brass, nickel-plated	Polyurethane (PUR)	G 1/4		550	465	Yes
FL2E-F-BNF-018G-R	Brass, nickel-plated	Fluor caoutchouc (FPM/FKM)	G 1/8		550	425	No
FL2E-F-BNF-014G-R	Brass, nickel-plated	Fluor caoutchouc (FPM/FKM)	G 1/4		550	465	No
FL3-F-BNU-038G-018G-R	Brass, nickel-plated	Polyurethane (PUR)	G 3/8	G 1/8	550	1350	No
FL3-F-BNU-012G-038G-R	Brass, nickel-plated	Polyurethane (PUR)	G 1/2	G 3/8	550	3200	No
FL3-F-BNU-034G-012G-R	Brass, nickel-plated	Polyurethane (PUR)	G 3/4	G 1/2	550	6200	No
FL3-F-BNU-100G-034G-R	Brass, nickel-plated	Polyurethane (PUR)	G 1	G 3/4	550	9800	No
FL3-F-BNU-038G-018G-R-V	Brass, nickel-plated	Polyurethane (PUR)	G 3/8	G 1/8	550	1350	Yes
FL3-F-BNU-012G-038G-R-V	Brass, nickel-plated	Polyurethane (PUR)	G 1/2	G 3/8	550	3200	Yes
FL3-F-BNU-034G-012G-R-V	Brass, nickel-plated	Polyurethane (PUR)	G 3/4	G 1/2	550	6200	Yes
FL3-F-BNU-100G-034G-R-V	Brass, nickel-plated	Polyurethane (PUR)	G 1	G 3/4	550	9800	Yes
FL3-F-BNF-038G-018G-R	Brass, nickel-plated	Fluor caoutchouc (FPM/FKM)	G 3/8	G 1/8	550	1350	No
FL3-F-BNF-012G-038G-R	Brass, nickel-plated	Fluor caoutchouc (FPM/FKM)	G 1/2	G 3/8	550	3200	No
FL3-F-BNF-034G-012G-R	Brass, nickel-plated	Fluor caoutchouc (FPM/FKM)	G 3/4	G 1/2	550	6200	No
FL3-F-BNF-100G-034G-R	Brass, nickel-plated	Fluor caoutchouc (FPM/FKM)	G 1	G 3/4	550	9800	No



Reference	DN	A	B	E	F	H	I
FL2/3-018	5	32	30	16	22	16	8
FL2/3-014	5	32	30	16	22	16	8
FL2/3-038	8	39	40	20	26	25	12.5
FL2/3-012	11	55	65	30	35	40	20
FL2/3-034	15	70	65	40	42	40	20
FL2/3-100	18	80	80	45	52.5	50	25

ENGLISH

Materials:

Body: nickel-plated brass, seals: PUR (G 3/4" - G 1": NBR), pilot pin, flange screw and safety ring: zinc-plated steel

Temperature range:

-10°C bis +85°C

Operating pressure:

0,5 - 12 bar

Media:

Oiled compressed air

NEDERLANDS

Materialen

Lichaam: Vernikkeld messing, afdichtingen: PUR (G 3/4" - G 1": NBR), geleiderpen, flensschroef en veiligheidsring: Verzinkt staal

Temperatuurbereik:

-10°C bis +85°C

Bedrijfsdruk:

0,5 - 12 bar

Media:

geoliede perslucht

DEUTSCH

Werkstoffe:

Körper: Messing vernickelt, Dichtungen: PUR (G 3/4" - G 1": NBR), Führungzapfen, Flanschschraube und Sicherungsring: Stahl verzinkt

Temperaturbereich:

-10°C bis +85°C

Betriebsdruck:

0,5 - 12 bar

Medien:

geölte Druckluft

FRANÇAIS

Matériaux:

Corps : laiton nickelé, joints : PUR (G 3/4" - G 1" : NBR), ergot de guidage, vis pour brides et bagues de sécurité : acier galvanisé

Plage de température:

-10°C bis +85°C

Pression de service:

0,5 - 12 bar

Fluides:

air comprimé huilé