

FL2S-MH - series

Threaded nozzle - Hose screw connection

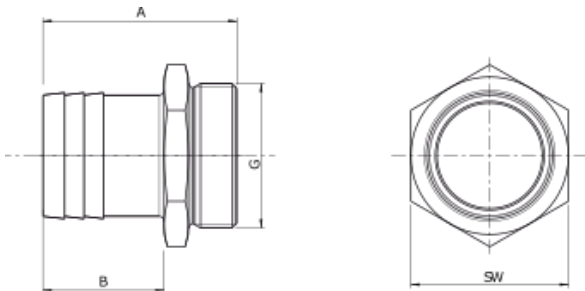


Threaded nozzles with cylindrical threads - internal cone, up to 40 bar

Brass, nickel-plated, PN 16 bar	Brass, PN 16 bar	Stainless steel, PN 40 bar	Polypropylene (PP), PN 25 bar	Steel, PN 10 bar	Nominal outer diameter of connection 1	Hose pillar (mm)	Wrench width (mm)
FL2S-MH-BN-M3-02	FL2S-MH-B-M3-02-I	FL2S-MH-ST-M3-02-I			M3	2	4,5
	FL2S-MH-B-M3-I	FL2S-MH-ST-M3-I			M3	3	4,5
	FL2S-MH-B-M5-02-I				M5	2	7
FL2S-MH-BN-M5-03	FL2S-MH-B-M5-03-I				M5	3	7
FL2S-MH-BN-M5-04	FL2S-MH-B-M5-04-I	FL2S-MH-ST-M5-04-I			M5	4	7
FL2S-MH-BN-M5-06	FL2S-MH-B-M5-06-I	FL2S-MH-ST-M5-06-I			M5	6	7
FL2S-MH-BN-018G-04-I	FL2S-MH-B-018G-04-I	FL2S-MH-ST-018G-04-I	FL2S-MH-PP-018G-04		G 1/8 inch	4	14
FL2S-MH-BN-018G-06-I	FL2S-MH-B-018G-06-I	FL2S-MH-ST-018G-06-I	FL2S-MH-PP-018G-06		G 1/8 inch	6	14
FL2S-MH-BN-018G-08-I	FL2S-MH-B-018G-08-I	FL2S-MH-ST-018G-08-I	FL2S-MH-PP-018G-08		G 1/8 inch	8	14
FL2S-MH-BN-018G-09	FL2S-MH-B-018G-09-I	FL2S-MH-ST-018G-09-I			G 1/8 inch	9	14
FL2S-MH-BN-014G-04-I	FL2S-MH-B-014G-04-I	FL2S-MH-ST-014G-04-I	FL2S-MH-PP-014G-04		G 1/4 inch	4	17
FL2S-MH-BN-014G-06-I	FL2S-MH-B-014G-06-I	FL2S-MH-ST-014G-06-I	FL2S-MH-PP-014G-06		G 1/4 inch	6	17
FL2S-MH-BN-014G-08-I	FL2S-MH-B-014G-08-I	FL2S-MH-ST-014G-08-I	FL2S-MH-PP-014G-08		G 1/4 inch	8	17
FL2S-MH-BN-014G-09-I	FL2S-MH-B-014G-09-I	FL2S-MH-ST-014G-09-I		FL2S-MH-EZ-014G-09	G 1/4 inch	9	17
FL2S-MH-BN-014G-10-I	FL2S-MH-B-014G-10-I	FL2S-MH-ST-014G-10-I	FL2S-MH-PP-014G-10		G 1/4 inch	10	17
FL2S-MH-BN-014G-12			FL2S-MH-PP-014G-12		G 1/4 inch	12	17
FL2S-MH-BN-014G-13	FL2S-MH-B-014G-13-I	FL2S-MH-ST-014G-13-I		FL2S-MH-EZ-014G-13	G 1/4 inch	13	17
	FL2S-MH-B-038G-04-I	FL2S-MH-ST-038G-04-I	FL2S-MH-PP-038G-04		G 3/8 inch	4	19
	FL2S-MH-B-038G-06-I	FL2S-MH-ST-038G-06-I	FL2S-MH-PP-038G-06		G 3/8 inch	6	19
FL2S-MH-BN-038G-08-I	FL2S-MH-B-038G-08-I	FL2S-MH-ST-038G-08-I	FL2S-MH-PP-038G-08		G 3/8 inch	8	19
FL2S-MH-BN-038G-09	FL2S-MH-B-038G-09-I	FL2S-MH-ST-038G-09-I			G 3/8 inch	9	19
FL2S-MH-BN-038G-10-I	FL2S-MH-B-038G-10-I	FL2S-MH-ST-038G-10-I	FL2S-MH-PP-038G-10		G 3/8 inch	10	19
			FL2S-MH-PP-038G-12		G 3/8 inch	12	
FL2S-MH-BN-038G-13-I	FL2S-MH-B-038G-13-I	FL2S-MH-ST-038G-13-I		FL2S-MH-EZ-038G-13	G 3/8 inch	13	19
			FL2S-MH-PP-012G-04		G 1/2 inch	4	
	FL2S-MH-B-012G-06-I	FL2S-MH-ST-012G-06-I	FL2S-MH-PP-012G-06		G 1/2 inch	6	24
FL2S-MH-BN-012G-08-I	FL2S-MH-B-012G-08-I	FL2S-MH-ST-012G-08-I	FL2S-MH-PP-012G-08		G 1/2 inch	8	24
FL2S-MH-BN-012G-09-I	FL2S-MH-B-012G-09-I	FL2S-MH-ST-012G-09-I			G 1/2 inch	9	24
FL2S-MH-BN-012G-10-I	FL2S-MH-B-012G-10-I	FL2S-MH-ST-012G-10-I	FL2S-MH-PP-012G-10		G 1/2 inch	10	24
			FL2S-MH-PP-012G-12		G 1/2 inch	12	
FL2S-MH-BN-012G-13-I	FL2S-MH-B-012G-13-I	FL2S-MH-ST-012G-13-I	FL2S-MH-PP-012G-13	FL2S-MH-EZ-012G-13	G 1/2 inch	13	24
FL2S-MH-BN-012G-16	FL2S-MH-B-012G-16-I	FL2S-MH-ST-012G-16-I			G 1/2 inch	16	24
FL2S-MH-BN-012G-19	FL2S-MH-B-012G-19	FL2S-MH-ST-012G-19-I		FL2S-MH-EZ-012G-19	G 1/2 inch	19	24
	FL2S-MH-B-034G-09-I	FL2S-MH-ST-034G-09-I			G 3/4 inch	9	30
FL2S-MH-BN-034G-13-I	FL2S-MH-B-034G-13-I	FL2S-MH-ST-034G-13-I		FL2S-MH-EZ-034G-13	G 3/4 inch	13	30
FL2S-MH-BN-034G-16-I	FL2S-MH-B-034G-16-I	FL2S-MH-ST-034G-16-I			G 3/4 inch	16	30
FL2S-MH-BN-034G-19-I	FL2S-MH-B-034G-19-I	FL2S-MH-ST-034G-19-I	FL2S-MH-PP-034G-19	FL2S-MH-EZ-034G-19	G 3/4 inch	19	30
FL2S-MH-BN-034G-25-I	FL2S-MH-B-034G-25-I	FL2S-MH-ST-034G-25		FL2S-MH-EZ-034G-25	G 3/4 inch	25	30
FL2S-MH-BN-100G-19-I	FL2S-MH-B-100G-19-I	FL2S-MH-ST-100G-19-I			G 1 inch	19	36
FL2S-MH-BN-100G-25-I	FL2S-MH-B-100G-25-I	FL2S-MH-ST-100G-25-I	FL2S-MH-PP-100G-25		G 1 inch	25	36
FL2S-MH-BN-100G-32-I	FL2S-MH-B-100G-32-I	FL2S-MH-ST-100G-32-I			G 1 inch	32	36
FL2S-MH-BN-114G-32	FL2S-MH-B-114G-32	FL2S-MH-ST-114G-32	FL2S-MH-PP-114G-32		G 1 1/4 inch	32	42
FL2S-MH-BN-114G-38	FL2S-MH-B-114G-38	FL2S-MH-ST-114G-38			G 1 1/4 inch	38	42

Brass, nickel-plated, PN 16 bar	Brass, PN 16 bar	Stainless steel, PN 40 bar	Polypropylene (PP), PN 25 bar	Steel, PN 10 bar	Nominal outer diameter of connection 1	Hose pillar (mm)	Wrench width (mm)
FL2S-MH-BN-112G-32	FL2S-MH-B-112G-32	FL2S-MH-ST-112G-32			G 1 1/2 inch	32	48
FL2S-MH-BN-112G-38	FL2S-MH-B-112G-38	FL2S-MH-ST-112G-38	FL2S-MH-PP-112G-38		G 1 1/2 inch	38	48
FL2S-MH-BN-112G-50	FL2S-MH-B-112G-50	FL2S-MH-ST-112G-50			G 1 1/2 inch	50	52
FL2S-MH-BN-200G-50	FL2S-MH-B-200G-50	FL2S-MH-ST-200G-50	FL2S-MH-PP-200G-50		G 2 inch	50	70
	FL2S-MH-B-212G-63				G 2 1/2 inch	63	80
	FL2S-MH-B-300G-76		FL2S-MH-PP-300G-76		G 3 inch	76	95

Notes: -I - with inside cone; * Total length: 42 mm, **Total length: 33 mm



Reference	A	B	Reference	A	B
FL2S-MH-B-M5-04-I	15.5	7.5	FL2S-MH-ST-038G-04-I	36	22
FL2S-MH-B-018G-09-I	33	22	FL2S-MH-ST-038G-06-I	36	22
FL2S-MH-B-014G-09-I	35	22	FL2S-MH-ST-038G-09-I	36	22
FL2S-MH-B-038G-13-I	42	28	FL2S-MH-ST-038G-13-I	42	28
FL2S-MH-B-034G-09-I	50	33	FL2S-MH-ST-012G-06-I	40	24
FL2S-MH-B-034G-13-I	48.5	28	FL2S-MH-ST-012G-09-I	40	24
FL2S-MH-B-114G-32	63	38	FL2S-MH-ST-012G-13-I	45	28
FL2S-MH-B-114G-38	63	38	FL2S-MH-ST-012G-16-I	45	28
FL2S-MH-B-112G-32	63	38	FL2S-MH-ST-012G-19-I	50	33
FL2S-MH-B-112G-38	63	38	FL2S-MH-ST-034G-09-I	40	22
FL2S-MH-B-112G-50	65	38	FL2S-MH-ST-034G-13-I	46	28
FL2S-MH-B-200G-50	93	69.6	FL2S-MH-ST-034G-16-I	56.5	36
FL2S-MH-B-300G-76	114	97	FL2S-MH-ST-034G-19-I	50	33
FL2S-MH-ST-M3-02-I	11	5	FL2S-MH-ST-034G-25	53	35
FL2S-MH-ST-M3-I	11	5	FL2S-MH-ST-100G-19-I	50	32
FL2S-MH-ST-M5-04-I	18	9	FL2S-MH-ST-100G-25-I	50	33
FL2S-MH-ST-M5-06-I	20	11	FL2S-MH-ST-100G-32-I	55	36
FL2S-MH-ST-018G-04-I	18	17	FL2S-MH-ST-114G-32	60	38
FL2S-MH-ST-018G-06-I	33	20	FL2S-MH-ST-114G-38	66	40
FL2S-MH-ST-018G-09-I	33	20	FL2S-MH-ST-112G-32	85	50
FL2S-MH-ST-014G-04-I	31	17	FL2S-MH-ST-112G-38	85	50
FL2S-MH-ST-014G-06-I	35	21	FL2S-MH-ST-112G-50	70	46
FL2S-MH-ST-014G-09-I	35	22	FL2S-MH-ST-200G-50	80	50
FL2S-MH-ST-014G-13-I	42	28			



Threaded nozzles with cylindrical threads, with NBR O-ring, up to 30 bar

Reference	Material	Surface protection	Seal	Nominal outer diameter of connection 1 (inch)	Hose pillar (mm)	Max pressure (bar)	Wrench width (mm)
FL2S-MH-BNN-018G-06-O	Brass	Nickel-plated	NBR (nitrile rubber)	G 1/8	6	30	14
FL2S-MH-BNN-018G-08-O	Brass	Nickel-plated	NBR (nitrile rubber)	G 1/8	8	30	14
FL2S-MH-BNN-018G-09-O	Brass	Nickel-plated	NBR (nitrile rubber)	G 1/8	9	30	14
FL2S-MH-BNN-014G-06-O	Brass	Nickel-plated	NBR (nitrile rubber)	G 1/4	6	30	17
FL2S-MH-BNN-014G-08-O	Brass	Nickel-plated	NBR (nitrile rubber)	G 1/4	8	30	17
FL2S-MH-BNN-014G-09-O	Brass	Nickel-plated	NBR (nitrile rubber)	G 1/4	9	30	17
FL2S-MH-BNN-014G-10-O	Brass	Nickel-plated	NBR (nitrile rubber)	G 1/4	10	30	17
FL2S-MH-BNN-014G-12-O	Brass	Nickel-plated	NBR (nitrile rubber)	G 1/4	12	30	17
FL2S-MH-BNN-038G-08-O	Brass	Nickel-plated	NBR (nitrile rubber)	G 3/8	8	30	20
FL2S-MH-BNN-038G-09-O	Brass	Nickel-plated	NBR (nitrile rubber)	G 3/8	9	30	20
FL2S-MH-BNN-038G-10-O	Brass	Nickel-plated	NBR (nitrile rubber)	G 3/8	10	30	20
FL2S-MH-BNN-038G-12-O	Brass	Nickel-plated	NBR (nitrile rubber)	G 3/8	12	30	20
FL2S-MH-BNN-038G-13-O	Brass	Nickel-plated	NBR (nitrile rubber)	G 3/8	13	30	20
FL2S-MH-BNN-038G-16-O	Brass	Nickel-plated	NBR (nitrile rubber)	G 3/8	16	30	20
FL2S-MH-BNN-012G-09-O	Brass	Nickel-plated	NBR (nitrile rubber)	G 1/2	9	15	25
FL2S-MH-BNN-012G-12-O	Brass	Nickel-plated	NBR (nitrile rubber)	G 1/2	12	30	24
FL2S-MH-BNN-012G-13-O	Brass	Nickel-plated	NBR (nitrile rubber)	G 1/2	13	15	25
FL2S-MH-BNN-012G-16-O	Brass	Nickel-plated	NBR (nitrile rubber)	G 1/2	16	30	24
FL2S-MH-BNN-012G-19-O	Brass	Nickel-plated	NBR (nitrile rubber)	G 1/2	19	30	25

Reference	Length of connection 1	Length
FL2S-MH-BNN-018G-06-O	6.5	30
FL2S-MH-BNN-018G-08-O	6.5	30
FL2S-MH-BNN-018G-09-O	6.5	31
FL2S-MH-BNN-014G-06-O	8	32
FL2S-MH-BNN-014G-08-O	8	32
FL2S-MH-BNN-014G-09-O	8	33
FL2S-MH-BNN-014G-10-O		
FL2S-MH-BNN-014G-12-O	8	33
FL2S-MH-BNN-038G-08-O	9	33
FL2S-MH-BNN-038G-09-O	9	34
FL2S-MH-BNN-038G-10-O		
FL2S-MH-BNN-038G-12-O	9	34
FL2S-MH-BNN-038G-13-O		
FL2S-MH-BNN-038G-16-O	9	38
FL2S-MH-BNN-012G-09-O	10	36
FL2S-MH-BNN-012G-12-O	10	39.5
FL2S-MH-BNN-012G-13-O	10	40
FL2S-MH-BNN-012G-16-O	10	41.5
FL2S-MH-BNN-012G-19-O	10	50



Threaded nozzles with male thread and safety collar, Dimensions according to EN 14420-5 (DIN 2817)

Reference	Material	Nominal outer diameter of connection 1 (inch)	Hose pillar (mm)
FL2S-MH-B-012G-13-E	Brass	G 1/2	13
FL2S-MH-B-034G-19-E	Brass	G 3/4	19
FL2S-MH-B-100G-25-E	Brass	G 1	25
FL2S-MH-B-114G-32-E	Brass	G 1 1/4	32
FL2S-MH-B-112G-38-E	Brass	G 1 1/2	38
FL2S-MH-B-200G-38-E	Brass	G 2	38
FL2S-MH-B-200G-50-E	Brass	G 2	50
FL2S-MH-B-212G-63-E	Brass	G 2 1/2	63
FL2S-MH-B-300G-75-E	Brass	G 3	75
FL2S-MH-B-400G-100-E	Brass	G 4	100
FL2S-MH-S-012G-13-E	Stainless steel	G 1/2	13
FL2S-MH-S-034G-19-E	Stainless steel	G 3/4	19
FL2S-MH-S-100G-25-E	Stainless steel	G 1	25
FL2S-MH-S-114G-32-E	Stainless steel	G 1 1/4	32
FL2S-MH-S-112G-38-E	Stainless steel	G 1 1/2	38
FL2S-MH-S-200G-50-E	Stainless steel	G 2	50
FL2S-MH-S-212G-63-E	Stainless steel	G 2 1/2	63
FL2S-MH-S-300G-75-E	Stainless steel	G 3	75
FL2S-MH-S-400G-100-E	Stainless steel	G 4	100

Version:

hose connections smooth with safety collar

Note:

The hose assembly is carried out using shell hose clamps to EN 14420-3 (DIN 2817)



Threaded nozzles with metric thread, PN 16

Reference	Material	Nominal outer diameter of connection 1 (mm)	Hose pillar (mm)	Wrench width (mm)
FL2S-MH-B-M8-06	Brass	M8 x 0.75	6	11
FL2S-MH-B-M8-09	Brass	M8 x 0.75	9	11
FL2S-MH-B-M10-09	Brass	M10 x 1	9	11
FL2S-MH-B-M12-13	Brass	M12 x 1.5	13	15
FL2S-MH-B-M14-13	Brass	M14 x 1.5	13	15
FL2S-MH-B-M16-13	Brass	M16 x 1.5	13	17
FL2S-MH-B-M24-19	Brass	M24 x 1.5	19	27



Threaded nozzles with tapered thread, up to 16 bar

Brass, nickel-plated, PN 16 bar	Stainless steel, PN 16 bar	PA 6, PN 10 bar	Nominal outer diameter of connection 1	Hose pillar (mm)	Wrench width (mm)
		FL2S-MH-P-M5-03	M5	3	
		FL2S-MH-P-018R-04	R 1/8 inch	4	
FL2S-MH-BN-018R-06		FL2S-MH-P-018R-06	R 1/8 inch	6	12
FL2S-MH-BN-018R-08		FL2S-MH-P-018R-08	R 1/8 inch	8	12
FL2S-MH-BN-018R-09		FL2S-MH-P-018R-09	R 1/8 inch	9	12
FL2S-MH-BN-018R-10			R 1/8 inch	10	12
		FL2S-MH-P-014R-04	R 1/4 inch	4	
FL2S-MH-BN-014R-05		FL2S-MH-P-014R-05	R 1/4 inch	5	14
FL2S-MH-BN-014R-06		FL2S-MH-P-014R-06	R 1/4 inch	6	14
FL2S-MH-BN-014R-08		FL2S-MH-P-014R-08	R 1/4 inch	8	14
FL2S-MH-BN-014R-09	FL2S-MH-SH-014R-09	FL2S-MH-P-014R-09	R 1/4 inch	9	14
FL2S-MH-BN-014R-10		FL2S-MH-P-014R-10	R 1/4 inch	10	14
FL2S-MH-BN-014R-12			R 1/4 inch	12	14
		FL2S-MH-P-038R-06	R 3/8 inch	6	
		FL2S-MH-P-038R-08	R 3/8 inch	8	
FL2S-MH-BN-038R-09	FL2S-MH-SH-038R-09	FL2S-MH-P-038R-09	R 3/8 inch	9	17
FL2S-MH-BN-038R-10		FL2S-MH-P-038R-10	R 3/8 inch	10	17
FL2S-MH-BN-038R-12		FL2S-MH-P-038R-12	R 3/8 inch	12	17
FL2S-MH-BN-038R-13	FL2S-MH-SH-038R-13	FL2S-MH-P-038R-13	R 3/8 inch	13	17
FL2S-MH-BN-038R-16			R 3/8 inch	16	17
		FL2S-MH-P-012R-08	R 1/2 inch	8	
FL2S-MH-BN-012R-09		FL2S-MH-P-012R-09	R 1/2 inch	9	22
FL2S-MH-BN-012R-10			R 1/2 inch	10	22
FL2S-MH-BN-012R-12		FL2S-MH-P-012R-12	R 1/2 inch	12	22
FL2S-MH-BN-012R-13	FL2S-MH-SH-012R-13	FL2S-MH-P-012R-13	R 1/2 inch	13	22
FL2S-MH-BN-012R-16		FL2S-MH-P-012R-16	R 1/2 inch	16	22
FL2S-MH-BN-012R-19	FL2S-MH-SH-012R-19		R 1/2 inch	19	22
		FL2S-MH-P-034R-16	R 3/4 inch	16	
	FL2S-MH-SH-034R-19	FL2S-MH-P-034R-19	R 3/4 inch	19	
	FL2S-MH-SH-100R-25	FL2S-MH-P-100R-25	R 1 inch	25	
	FL2S-MH-SH-114R-32		R 1 1/4 inch	32	
	FL2S-MH-SH-112R-38		R 1 1/2 inch	38	
	FL2S-MH-SH-200R-50		R 2 inch	50	63
	FL2S-MH-SH-212R-60		R 2 1/2 inch	60	78
	FL2S-MH-SH-300R-75		R 3 inch	75	90



Threaded nozzles with metric thread, PN 16

Reference	Material	Nominal outer diameter of connection 1 (inch)	Hose pillar (mm)	Wrench width (mm)	Max pressure (bar)
FL2S-MH-SH-014N-09	Stainless steel	1/4 NPT	9	11	16
FL2S-MH-SH-038N-09	Stainless steel	3/8 NPT	9	11	16
FL2S-MH-SH-038N-13	Stainless steel	3/8 NPT	13		16
FL2S-MH-SH-012N-13	Stainless steel	1/2 NPT	13		16
FL2S-MH-SH-012N-19	Stainless steel	1/2 NPT	19		16
FL2S-MH-SH-034N-19	Stainless steel	3/4 NPT	19	11	16
FL2S-MH-SH-100N-25	Stainless steel	1 NPT	25	15	16
FL2S-MH-SH-114N-32	Stainless steel	1 1/4 NPT	32	15	16
FL2S-MH-SH-112N-38	Stainless steel	1 1/2 NPT	38	17	16
FL2S-MH-SH-200N-50	Stainless steel	2 NPT	50	27	16