

FL2S-FM - series

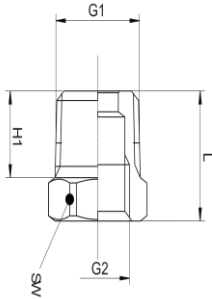
Reducing nipple



Reducing nipple with cylindrical male and female thread, up to 40 bar

Brass, nickel-plated, PN 16	Brass, PN 16	Stainless steel, PN 40	Nominal inner diameter of connection 1	Nominal outer diameter of connection 2	L (mm) *	Wrench width (mm) *
FL2S-FM-BN-M3-M5	FL2S-FM-B-M3-M5	FL2S-FM-ST-M3-M5	M3	M5	1,5	7
FL2S-FM-BN-018G-M5	FL2S-FM-B-018G-M5	FL2S-FM-ST-018G-M5	G 1/8 inch	M5	12	14
FL2S-FM-BN-M5-018G	FL2S-FM-B-M6-018G	FL2S-FM-ST-M5-018G	M5	G 1/8 inch	4	14
FL2S-FM-BN-014G-018G	FL2S-FM-B-014G-018G	FL2S-FM-ST-014G-018G	G 1/4 inch	G 1/8 inch	18	17
FL2S-FM-BN-038G-018G	FL2S-FM-B-038G-018G		G 3/8 inch	G 1/8 inch	19	19
FL2S-FM-BN-012G-018G			G 1/2 inch	G 1/8 inch		
FL2S-FM-BN-M5-014G	FL2S-FM-B-M5-014G	FL2S-FM-ST-M5-014G	M5	G 1/4 inch	4	17
FL2S-FM-BN-018G-014G	FL2S-FM-B-018G-014G	FL2S-FM-ST-018G-014G	G 1/8 inch	G 1/4 inch	4	17
FL2S-FM-BN-038G-014G	FL2S-FM-B-038G-014G	FL2S-FM-ST-038G-014G	G 3/8 inch	G 1/4 inch	20	19
FL2S-FM-BN-012G-014G	FL2S-FM-B-012G-014G		G 1/2 inch	G 1/4 inch	14	24
FL2S-FM-BN-018G-038G	FL2S-FM-B-018G-038G	FL2S-FM-ST-018G-038G	G 1/8 inch	G 3/8 inch	4	19
FL2S-FM-BN-014G-038G	FL2S-FM-B-014G-038G	FL2S-FM-ST-014G-038G	G 1/4 inch	G 3/8 inch	5	19
FL2S-FM-BN-012G-038G	FL2S-FM-B-012G-038G	FL2S-FM-ST-012G-038G	G 1/2 inch	G 3/8 inch	16	24
FL2S-FM-BN-018G-012G	FL2S-FM-B-018G-012G	FL2S-FM-ST-018G-012G	G 1/8 inch	G 1/2 inch	6	24
FL2S-FM-BN-014G-012G	FL2S-FM-B-014G-012G	FL2S-FM-ST-014G-012G	G 1/4 inch	G 1/2 inch	6	24
FL2S-FM-BN-038G-012G	FL2S-FM-B-038G-012G	FL2S-FM-ST-038G-012G	G 3/8 inch	G 1/2 inch	6	24
FL2S-FM-BN-034G-012G	FL2S-FM-B-034G-012G	FL2S-FM-ST-034G-012G	G 3/4 inch	G 1/2 inch	19	32
FL2S-FM-BN-014G-034G	FL2S-FM-B-014G-034G		G 1/4 inch	G 3/4 inch	5	27
FL2S-FM-BN-038G-034G	FL2S-FM-B-038G-034G	FL2S-FM-ST-038G-034G	G 3/8 inch	G 3/4 inch	6	32
FL2S-FM-BN-012G-034G	FL2S-FM-B-012G-034G	FL2S-FM-ST-012G-034G	G 1/2 inch	G 3/4 inch	8	32
FL2S-FM-BN-100G-034G	FL2S-FM-B-100G-034G		G 1 inch	G 3/4 inch	15	36
FL2S-FM-BN-038G-100G			G 3/8 inch	G 1 inch		
FL2S-FM-BN-012G-100G	FL2S-FM-B-012G-100G	FL2S-FM-ST-012G-100G	G 1/2 inch	G 1 inch	6	36
FL2S-FM-BN-034G-100G	FL2S-FM-B-034G-100G	FL2S-FM-ST-034G-100G	G 3/4 inch	G 1 inch	6	36
FL2S-FM-BN-114G-100G	FL2S-FM-B-114G-100G		G 1 1/4 inch	G 1 inch	14	45
FL2S-FM-BN-034G-114G	FL2S-FM-B-034G-114G		G 3/4 inch	G 1 1/4 inch	7	42
FL2S-FM-BN-100G-114G	FL2S-FM-B-100G-114G		G 1 inch	G 1 1/4 inch	7	42
FL2S-FM-BN-112G-114G	FL2S-FM-B-112G-114G		G 1 1/2 inch	G 1 1/4 inch	15	51
FL2S-FM-BN-034G-112G	FL2S-FM-B-034G-112G		G 3/4 inch	G 1 1/2 inch	8	50
FL2S-FM-BN-100G-112G	FL2S-FM-B-100G-112G		G 1 inch	G 1 1/2 inch	8	50
FL2S-FM-BN-114G-112G	FL2S-FM-B-114G-112G		G 1 1/4 inch	G 1 1/2 inch	8	50
FL2S-FM-BN-100G-200G	FL2S-FM-B-100G-200G		G 1 inch	G 2 inch	9	60
FL2S-FM-BN-114G-200G	FL2S-FM-B-114G-200G		G 1 1/4 inch	G 2 inch	9	60
FL2S-FM-BN-112G-200G	FL2S-FM-B-112G-200G		G 1 1/2 inch	G 2 inch	9	60

*Details apply for the brass type.

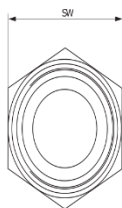
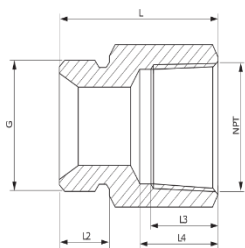


Reference	L (mm)	H1 (mm)	SW (mm)
FL2S-FM-BN-012G-018G	24	6	24
FL2S-FM-BN-018G-014G	13	8	17
FL2S-FM-BN-018G-038G	14	9	19
FL2S-FM-BN-014G-038G	14	9	19
FL2S-FM-BN-018G-012G	15.5	10	24
FL2S-FM-BN-014G-012G	15.5	10	24
FL2S-FM-BN-038G-012G	15.5	10	24
FL2S-FM-B-034G-114G	23	16	42
FL2S-FM-ST-014G-018G	26	8	17
FL2S-FM-ST-018G-014G	11.5	7.5	17
FL2S-FM-ST-014G-038G	14.5	9	19
FL2S-FM-ST-012G-034G	31	12	32



Reducing nipple with G-thread / NPT-thread, up to 40 bar

Reference	Material	Nominal outer diameter of connection 1 (inch)	Nominal inner diameter of connection 2 (inch)	Length (mm)	Wrench width (mm)	Max pressure (bar)
FL2S-MF-B-018GN	Brass	G 1/8	1/8 NPT	25	14	16
FL2S-MF-B-014GN	Brass	G 1/4	1/4 NPT	30	17	16
FL2S-MF-B-038GN	Brass	G 3/8	3/8 NPT	30	19	16
FL2S-MF-B-012GN	Brass	G 1/2	1/2 NPT	38	24	16
FL2S-MF-B-034GN	Brass	G 3/4	3/4 NPT	40	32	16
FL2S-MF-B-100GN	Brass	G 1	1 NPT	50	36	16
FL2S-MF-ST-018GN	Stainless steel	G 1/8	1/8 NPT			40
FL2S-MF-ST-014GN	Stainless steel	G 1/4	1/4 NPT			40
FL2S-MF-ST-038GN	Stainless steel	G 3/8	3/8 NPT			40
FL2S-MF-ST-012GN	Stainless steel	G 1/2	1/2 NPT			40
FL2S-MF-ST-034GN	Stainless steel	G 3/4	3/4 NPT			40
FL2S-MF-ST-100GN	Stainless steel	G 1	1 NPT			40



Reference	L (mm)	L2 (mm)	L4 (mm)	Wrench width – SW (mm)
FL2S-MF-B-018GN	25	10	12	14
FL2S-MF-B-014GN	30	10	13	17
FL2S-MF-B-038GN	30	10	13	19
FL2S-MF-B-012GN	38	12	18	24
FL2S-MF-B-034GN	40	19	18	32
FL2S-MF-B-100GN	50	16	21	36



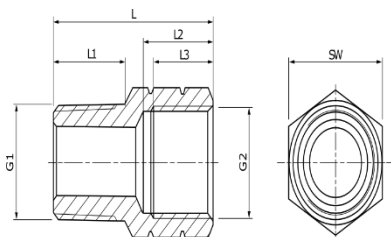
Extensions with NPT-thread, up to 345 bar

Reference	Material	Surface protection	Nominal outer diameter of connection 1	Nominal inner diameter of connection 2	Max pressure (bar)
FL2S-MF-EZ-018N	Steel	Zinc plated	1/8 inch NPT	1/8 inch NPT	345
FL2S-MF-EZ-014N	Steel	Zinc plated	1/4 inch NPT	1/4 inch NPT	345
FL2S-MF-EZ-012N	Steel	Zinc plated	1/2 inch NPT	1/2 inch NPT	345
FL2S-MF-ST-018N	Stainless steel		1/8 inch NPT	1/8 inch NPT	345
FL2S-MF-ST-014N	Stainless steel		1/4 inch NPT	1/4 inch NPT	345
FL2S-MF-ST-038N	Stainless steel		3/8 inch NPT	3/8 inch NPT	345
FL2S-MF-ST-012N	Stainless steel		1/2 inch NPT	1/2 inch NPT	345



Reducing nipple with NPT thread / G-thread, to 700 bar

Reference	Material	Nominal outer diameter of connection 1 (inch)	Nominal inner diameter of connection 2 (inch)	Length (mm)	Wrench width (mm)	Max pressure (bar)
FL2S-MF-B-018NG	Brass	1/8 NPT	G 1/8	25	14	16
FL2S-MF-B-014NG	Brass	1/4 NPT	G 1/4	30	17	16
FL2S-MF-B-038NG	Brass	3/8 NPT	G 3/8	30	19	16
FL2S-MF-B-012NG	Brass	1/2 NPT	G 1/2	40	24	16
FL2S-MF-B-034NG	Brass	3/4 NPT	G 3/4	40	32	16
FL2S-MF-ST-018NG	Stainless steel	1/8 NPT	G 1/8			40
FL2S-MF-ST-014NG	Stainless steel	1/4 NPT	G 1/4			40
FL2S-MF-ST-038NG	Stainless steel	3/8 NPT	G 3/8			40
FL2S-MF-ST-012NG	Stainless steel	1/2 NPT	G 1/2			40
FL2S-MF-ST-034NG	Stainless steel	3/4 NPT	G 3/4			40
FL2S-MF-NS-038NG	Nitrified steel	3/8 NPT	G 3/8			700



Reference	L (mm)	L1 (mm)	L2 (mm)	L3 (mm)	Wrench width – SW (mm)
FL2S-MF-ST-014NG	30	13	12	10.5	17
FL2S-MF-ST-012NG	40	18	17.5	15	24



Reducing nipple with metric thread / G thread, up to 315 bar

Reference	Material	Nominal inner diameter of connection 1 (inch)	Nominal outer diameter of connection 2 (mm)	Wrench width (mm)	Max pressure (bar)
FL2S-FM-EZ-014G-22M	Steel	G 1/4 inch	M22	27	250
FL2S-FM-EZ-038G-22M	Steel	G 3/8 inch	M22	27	250
FL2S-FM-EZ-012G-22M	Steel	G 1/2 inch	M22	27	315



Reducing nipple with NPT thread, PN 16

Reference	Material	Nominal outer diameter of connection 1 (inch)	Nominal inner diameter of connection 2 (inch)	Wrench width (mm)	Max pressure (bar)
FL2S-MF-SH-012N-038N	Stainless steel	1/2 NPT	3/8 NPT	24	16
FL2S-MF-SH-034N-012N	Stainless steel	3/4 NPT	1/2 NPT	30	16
FL2S-MF-SH-100N-034N	Stainless steel	1 NPT	3/4 NPT	36	16
FL2S-MF-SH-114N-100N	Stainless steel	1 1/4 NPT	1 NPT	46	16
FL2S-MF-SH-112N-114N	Stainless steel	1 1/2 NPT	1 1/4 NPT	50	16
FL2S-MF-SH-200N-112N	Stainless steel	2 NPT	1 1/2 NPT	62	16



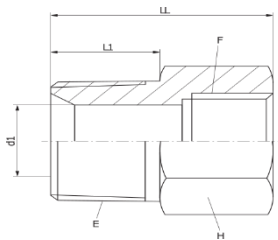
Reducing nipple with R-thread / NPT-thread, up to 40 bar

Reference	Material	Nominal outer diameter of connection 1 (inch)	Nominal inner diameter of connection 2 (inch)	Length (mm)	Wrench width (mm)	Max pressure (bar)
FL2S-MF-B-018RN	Brass	R 1/8	1/8 NPT	25	14	16
FL2S-MF-B-014RN	Brass	R 1/4	1/4 NPT	30	17	16
FL2S-MF-B-038RN	Brass	R 3/8	3/8 NPT	30	19	16
FL2S-MF-B-012RN	Brass	R 1/2	1/2 NPT	38	24	16
FL2S-MF-B-034RN	Brass	R 3/4	3/4 NPT	40	32	16
FL2S-MF-B-100RN	Brass	R 1	1 NPT	50	36	16
FL2S-MF-ST-018RN	Stainless steel	R 1/8	1/8 NPT			40
FL2S-MF-ST-014RN	Stainless steel	R 1/4	1/4 NPT			40
FL2S-MF-ST-038RN	Stainless steel	R 3/8	3/8 NPT			40
FL2S-MF-ST-012RN	Stainless steel	R 1/2	1/2 NPT			40
FL2S-MF-ST-034RN	Stainless steel	R 3/4	3/4 NPT			40
FL2S-MF-ST-100RN	Stainless steel	R 1	1 NPT			40

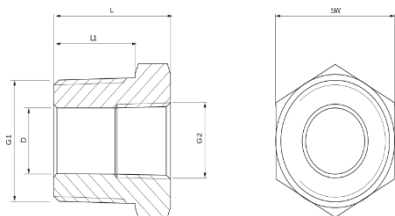


Reducing nipple with NPT-thread, up to 275 bar

Reference	Material	Surface protection	Nominal outer diameter of connection 1 (inch)	Nominal inner diameter of connection 2 (inch)	Max pressure (bar)
FL2S-MF-EZ-014N-018N	Steel	Zinc plated	1/4 NPT	1/8 NPT	275
FL2S-MF-EZ-014N-038N	Steel	Zinc plated	1/4 NPT	3/8 NPT	210
FL2S-MF-EZ-038N-018N	Steel	Zinc plated	3/8 NPT	1/8 NPT	210
FL2S-MF-EZ-038N-014N	Steel	Zinc plated	3/8 NPT	1/4 NPT	210
FL2S-MF-EZ-038N-012N	Steel	Zinc plated	3/8 NPT	1/2 NPT	210
FL2S-MF-EZ-012N-018N	Steel	Zinc plated	1/2 NPT	1/8 NPT	210
FL2S-MF-EZ-012N-014N	Steel	Zinc plated	1/2 NPT	1/4 NPT	210
FL2S-MF-EZ-012N-038N	Steel	Zinc plated	1/2 NPT	3/8 NPT	210
FL2S-MF-EZ-034N-038N	Steel	Zinc plated	3/4 NPT	3/8 NPT	170
FL2S-MF-EZ-034N-012N	Steel	Zinc plated	3/4 NPT	1/2 NPT	170
FL2S-MF-EZ-100N-012N	Steel	Zinc plated	1 NPT	1/2 NPT	140
FL2S-MF-EZ-100N-034N	Steel	Zinc plated	1 NPT	3/4 NPT	140
FL2S-MF-EZ-114N-100N	Steel	Zinc plated	1 1/4 NPT	1 NPT	80
FL2S-MF-EZ-112N-100N	Steel	Zinc plated	1 1/2 NPT	1 NPT	80
FL2S-MF-ST-014N-018N	Stainless steel		1/4 NPT	1/8 NPT	275
FL2S-MF-ST-038N-018N	Stainless steel		3/8 NPT	1/8 NPT	210
FL2S-MF-ST-038N-014N	Stainless steel		3/8 NPT	1/4 NPT	210
FL2S-MF-ST-012N-014N	Stainless steel		1/2 NPT	1/4 NPT	210
FL2S-MF-ST-012N-038N	Stainless steel		1/2 NPT	3/8 NPT	210
FL2S-MF-ST-034N-038N	Stainless steel		3/4 NPT	3/8 NPT	170
FL2S-MF-ST-034N-012N	Stainless steel		3/4 NPT	1/2 NPT	170
FL2S-MF-ST-100N-012N	Stainless steel		1 NPT	1/2 NPT	140
FL2S-MF-ST-100N-034N	Stainless steel		1 NPT	3/4 NPT	140



Reference	LL (mm)	L1 (mm)	D1	Wrench width – H (mm)
FL2S-MF-EZ-014N-018N	21.6	14.2	6	14
FL2S-MF-EZ-038N-018N	21.6	14.2	8.3	19



Reference	L (mm)	L1 (mm)	D	Wrench width – SW (mm)
FL2S-MF-EZ-100N-012N	35	24.5	17.8	36



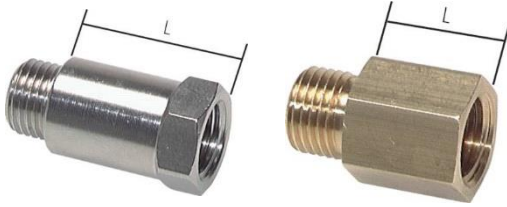
Reducing nipple with tapered male thread and cylindrical female thread, up to 25 bar

Cast iron, zinc plated, PN 25	Stainless steel, PN 16	Nominal outer diameter of connection 1 (inch)	Nominal inner diameter of connection 2 (inch)
FL2S-MF-IZ-014R-018R	FL2S-MF-SH-014R-018R	R 1/4	Rp 1/8
FL2S-MF-IZ-014R-038R		R 1/4	Rp 3/8
FL2S-MF-IZ-014R-012R		R 1/4	Rp 1/2
	FL2S-MF-SH-038R-018R	R 3/8	Rp 1/8
FL2S-MF-IZ-038R-014R	FL2S-MF-SH-038R-014R	R 3/8	Rp 1/4
FL2S-MF-IZ-038R-012R		R 3/8	Rp 1/2
	FL2S-MF-SH-012R-018R	R 1/2	Rp 1/8
FL2S-MF-IZ-012R-014R	FL2S-MF-SH-012R-014R	R 1/2	Rp 1/4
FL2S-MF-IZ-012R-038R	FL2S-MF-SH-012R-038R	R 1/2	Rp 3/8
FL2S-MF-IZ-012R-034R		R 1/2	Rp 3/4
FL2S-MF-IZ-012R-100R		R 1/2	Rp 1
FL2S-MF-IZ-034R-014R	FL2S-MF-SH-034R-014R	R 3/4	Rp 1/4
FL2S-MF-IZ-034R-038R	FL2S-MF-SH-034R-038R	R 3/4	Rp 3/8
FL2S-MF-IZ-034R-012R	FL2S-MF-SH-034R-012R	R 3/4	Rp 1/2
FL2S-MF-IZ-034R-100R		R 3/4	Rp 1
FL2S-MF-IZ-034R-114R		R 3/4	Rp 1 1/4
FL2S-MF-IZ-100R-038R		R 1	Rp 3/8
FL2S-MF-IZ-100R-012R	FL2S-MF-SH-100R-012R	R 1	Rp 1/2
FL2S-MF-IZ-100R-034R	FL2S-MF-SH-100R-034R	R 1	Rp 3/4
FL2S-MF-IZ-100R-114R		R 1	Rp 1 1/4
FL2S-MF-IZ-100R-112R		R 1	Rp 1 1/2
FL2S-MF-IZ-100R-200R		R 1	Rp 2
FL2S-MF-IZ-114R-012R		R 1 1/4	Rp 1/2
FL2S-MF-IZ-114R-034R	FL2S-MF-SH-114R-034R	R 1 1/4	Rp 3/4
FL2S-MF-IZ-114R-100R	FL2S-MF-SH-114R-100R	R 1 1/4	Rp 1
FL2S-MF-IZ-114R-112R		R 1 1/4	Rp 1 1/2
FL2S-MF-IZ-114R-200R		R 1 1/4	Rp 2
FL2S-MF-IZ-112R-012R	FL2S-MF-SH-112R-012R	R 1 1/2	Rp 1/2
FL2S-MF-IZ-112R-034R	FL2S-MF-SH-112R-014R	R 1 1/2	Rp 3/4
FL2S-MF-IZ-112R-100R	FL2S-MF-SH-112R-100R	R 1 1/2	Rp 1
FL2S-MF-IZ-112R-114R	FL2S-MF-SH-112R-114R	R 1 1/2	Rp 1 1/4
FL2S-MF-IZ-112R-200R		R 1 1/2	Rp 2
FL2S-MF-IZ-200R-012R		R 2	Rp 1/2
FL2S-MF-IZ-200R-034R		R 2	Rp 3/4
FL2S-MF-IZ-200R-100R	FL2S-MF-SH-200R-100R	R 2	Rp 1
FL2S-MF-IZ-200R-114R	FL2S-MF-SH-200R-114R	R 2	Rp 1 1/4
FL2S-MF-IZ-200R-112R	FL2S-MF-SH-200R-112R	R 2	Rp 1 1/2
FL2S-MF-IZ-200R-212R		R 2	Rp 2 1/2
FL2S-MF-IZ-200R-300R		R 2	Rp 3
FL2S-MF-IZ-212R-114R		R 2 1/2	Rp 1 1/4
FL2S-MF-IZ-212R-112R	FL2S-MF-SH-212R-112R	R 2 1/2	Rp 1 1/2
FL2S-MF-IZ-212R-200R	FL2S-MF-SH-212R-200R	R 2 1/2	Rp 2
FL2S-MF-IZ-212R-300R		R 2 1/2	Rp 3
FL2S-MF-IZ-300R-100R		R 3	Rp 1
FL2S-MF-IZ-300R-114R		R 3	Rp 1 1/4
FL2S-MF-IZ-300R-112R	FL2S-MF-SH-300R-112R	R 3	Rp 1 1/2
FL2S-MF-IZ-300R-200R	FL2S-MF-SH-300R-200R	R 3	Rp 2
FL2S-MF-IZ-300R-212R	FL2S-MF-SH-300R-212R	R 3	Rp 2 1/2
FL2S-MF-IZ-400R-200R		R 4	Rp 2
FL2S-MF-IZ-400R-300R	FL2S-MF-SH-400R-300R	R 4	Rp 3



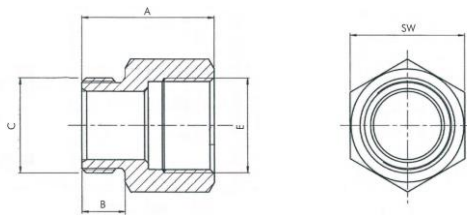
Threaded brass extension pieces with spline socket head, DIN 3523

Brass	Brass, chromium-plated	Nominal inner/outer diameter of connection 1 and 2 (inch)	L (mm)
FL2S-FM-B-038G-10L	FL2S-FM-BC-038G-10L	G 3/8	10
FL2S-FM-B-038G-15L	FL2S-FM-BC-038G-15L	G 3/8	15
FL2S-FM-B-038G-20L	FL2S-FM-BC-038G-20L	G 3/8	20
FL2S-FM-B-038G-25L	FL2S-FM-BC-038G-25L	G 3/8	25
FL2S-FM-B-038G-30L	FL2S-FM-BC-038G-30L	G 3/8	30
FL2S-FM-B-038G-40L	FL2S-FM-BC-038G-40L	G 3/8	40
FL2S-FM-B-038G-50L	FL2S-FM-BC-038G-50L	G 3/8	50
FL2S-FM-B-038G-80L	FL2S-FM-BC-038G-80L	G 3/8	80
FL2S-FM-B-038G-100L	FL2S-FM-BC-038G-100L	G 3/8	100
FL2S-FM-B-012G-10L	FL2S-FM-BC-012G-10L	G 1/2	10
FL2S-FM-B-012G-15L	FL2S-FM-BC-012G-15L	G 1/2	15
FL2S-FM-B-012G-20L	FL2S-FM-BC-012G-20L	G 1/2	20
FL2S-FM-B-012G-25L	FL2S-FM-BC-012G-25L	G 1/2	25
FL2S-FM-B-012G-30L	FL2S-FM-BC-012G-30L	G 1/2	30
FL2S-FM-B-012G-40L	FL2S-FM-BC-012G-40L	G 1/2	40
FL2S-FM-B-012G-50L	FL2S-FM-BC-012G-50L	G 1/2	50
FL2S-FM-B-012G-65L	FL2S-FM-BC-012G-65L	G 1/2	65
FL2S-FM-B-012G-80L	FL2S-FM-BC-012G-80L	G 1/2	80
FL2S-FM-B-012G-100L	FL2S-FM-BC-012G-100L	G 1/2	100
FL2S-FM-B-034G-10L	FL2S-FM-BC-034G-10L	G 3/4	10
FL2S-FM-B-034G-15L	FL2S-FM-BC-034G-15L	G 3/4	15
FL2S-FM-B-034G-20L	FL2S-FM-BC-034G-20L	G 3/4	20
FL2S-FM-B-034G-25L	FL2S-FM-BC-034G-25L	G 3/4	25
FL2S-FM-B-034G-30L	FL2S-FM-BC-034G-30L	G 3/4	30
FL2S-FM-B-034G-40L	FL2S-FM-BC-034G-40L	G 3/4	40
FL2S-FM-B-034G-50L	FL2S-FM-BC-034G-50L	G 3/4	50
FL2S-FM-B-034G-65L	FL2S-FM-BC-034G-65L	G 3/4	65
FL2S-FM-B-034G-80L	FL2S-FM-BC-034G-80L	G 3/4	80
FL2S-FM-B-034G-100L	FL2S-FM-BC-034G-100L	G 3/4	100
FL2S-FM-B-100G-15L	FL2S-FM-BC-100G-15L	G 1	15
FL2S-FM-B-100G-20L	FL2S-FM-BC-100G-20L	G 1	20
FL2S-FM-B-100G-25L	FL2S-FM-BC-100G-25L	G 1	25
FL2S-FM-B-100G-30L	FL2S-FM-BC-100G-30L	G 1	30
FL2S-FM-B-100G-40L	FL2S-FM-BC-100G-40L	G 1	40
FL2S-FM-B-100G-50L	FL2S-FM-BC-100G-50L	G 1	50
FL2S-FM-B-100G-65L	FL2S-FM-BC-100G-65L	G 1	65
FL2S-FM-B-100G-100L	FL2S-FM-BC-100G-100L	G 1	100

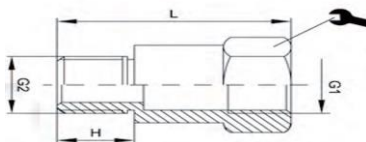


Threaded reductions with cylindrical male and female thread, up to 40 bar

Reference	Material	Surface protection	Nominal inner diameter of connection 1	Nominal outer diameter of connection 2	L (mm)	Wrench width (mm)	Max pressure (bar)
FL2S-FM-BN-M5-7L	Brass	Nickel-plated	M5	M5	7	8	16
FL2S-FM-BN-018G-10L	Brass	Nickel-plated	G 1/8 inch	G 1/8 inch	10	14	16
FL2S-FM-BN-018G-16L	Brass	Nickel-plated	G 1/8 inch	G 1/8 inch	16	14	16
FL2S-FM-BN-018G-36L	Brass	Nickel-plated	G 1/8 inch	G 1/8 inch	36	14	16
FL2S-FM-BN-018G-45L	Brass	Nickel-plated	G 1/8 inch	G 1/8 inch	45	14	16
FL2S-FM-BN-014G-11P5L	Brass	Nickel-plated	G 1/4 inch	G 1/4 inch	11.5	17	16
FL2S-FM-BN-014G-27L	Brass	Nickel-plated	G 1/4 inch	G 1/4 inch	27	17	16
FL2S-FM-BN-014G-43L	Brass	Nickel-plated	G 1/4 inch	G 1/4 inch	43	17	16
FL2S-FM-BN-038G-14L	Brass	Nickel-plated	G 3/8 inch	G 3/8 inch	14	22	16
FL2S-FM-BN-012G-16L	Brass	Nickel-plated	G 1/2 inch	G 1/2 inch	16	27	16
FL2S-FM-B-M5-10L	Brass		M5	M5	10		16
FL2S-FM-B-018G-15L	Brass		G 1/8 inch	G 1/8 inch	15		16
FL2S-FM-B-014G-18L	Brass		G 1/4 inch	G 1/4 inch	18		16
FL2S-FM-B-038G-19L	Brass		G 3/8 inch	G 3/8 inch	19		16
FL2S-FM-B-012G-22L	Brass		G 1/2 inch	G 1/2 inch	22		16
FL2S-FM-ST-M5-10L	Stainless steel		M5	M5	10	8	40
FL2S-FM-ST-018G-15L	Stainless steel		G 1/8 inch	G 1/8 inch	15		40
FL2S-FM-ST-018G-36L	Stainless steel		G 1/8 inch	G 1/8 inch	36		40
FL2S-FM-ST-018G-45L	Stainless steel		G 1/8 inch	G 1/8 inch	45		40
FL2S-FM-ST-014G-18L	Stainless steel		G 1/4 inch	G 1/4 inch	18	17	40
FL2S-FM-ST-038G-20L	Stainless steel		G 3/8 inch	G 3/8 inch	20		40
FL2S-FM-ST-012G-22L	Stainless steel		G 1/2 inch	G 1/2 inch	22	27	40
FL2S-FM-ST-034G-25L	Stainless steel		G 3/4 inch	G 3/4 inch	25	32	40



Reference	A (mm)	B (mm)
FL2S-FM-ST-M5-10L	15	5
FL2S-FM-ST-014G-18L	28	10
FL2S-FM-ST-012G-22L	34	12
FL2S-FM-ST-034G-25L	37	12



Reference	H (mm)	L (mm)
FL2S-FM-BN-014G-27L	8	35
FL2S-FM-BN-014G-43L	8	51
FL2S-FM-BN-018G-16L	6	22
FL2S-FM-BN-018G-36L	6	42