

Inline pressure regulator permanently set, 10 l/min



Reference	Reference, for drinking water	Connection size, inch	Outlet pressure, bar	Pressure tolerance, bar
M27GB	M27GK	G 1/4	1	+/- 0.3
M27GC	M27GM	G 1/4	2	+/- 0.3
M27GD	M27GN	G 1/4	3	+/- 0.3
M27GE	M27GP	G 1/4	4	+/- 0.4
M27GF	M27GQ	G 1/4	5	+/- 0.5
M27GG	M27GR	G 1/4	6	+/- 0.6
M27GH	M27GS	G 1/4	7	+/- 0.7
M27GJ	M27GT	G 1/4	8	+/- 0.8

ENGLISH

Function:

not resettable, preset diaphragm pressure reducer

Materials:

Type Standard: Housing: Nickel-plated brass, Inner parts: Brass, Diaphragm and seal: NBR (type drinking water) Housing: PA, Internal parts: stainless steel, diaphragm: EPDM, Seals: FKM

Temperature range:

+4°C to +60°C

Input pressure:

max. 10 bar, (type drinking water: max. 15 bar)

Flow*:

10 l/min

Media:

Water (type drinking water also drinking water & food)

Advantages:

- the pressure that has been set cannot be manipulated,
- Type drinking water conforms to NSF / ANSI 61 and 372

NEDERLANDS

Werking:

niet terugregelbare, vooraf ingestelde drukverlager

Materialen

Typ Standaard: Behuizing: Vernikkeld messing, Binnendelen: Messing, membraan en pakkingen: NBR, Type drinkwater: Behuizing: PA, Binnendelen: Roestvrij staal, Membraan: EPDM, Pakkingen: FKM

Temperatuurbereik:

+4°C tot +60°C

Ingangsdruk:

max. 10 bar (Type drinkwater: max. 15 bar)

Debiet*:

10 l/min

Media:

Water (type drinkwater ook drinkwater & levensmiddelen)

Voordelen:

- de ingestelde druk kan niet worden gewijzigd,
- Type drinkwater voldoet aan NSF / ANSI 61 en 372

DEUTSCH

Funktion:

nicht rücksteuerbarer, voreingestellter Druckminderer

Werkstoffe:

Typ Standard: Gehäuse: Messing vernickelt, Innenteile: Messing, Membrane und Dichtungen: NBR, Typ Trinkwasser: Gehäuse: PA, Innenteile: Edelstahl, Membrane: EPDM, Dichtungen: FKM

Temperaturbereich:

+4°C bis +60°C

Eingangsdruck:

max. 10 bar (Typ Trinkwasser: max. 15 bar)

Durchfluss*:

10 l/min

Medien:

Wasser (Typ Trinkwasser auch Trinkwasser bis +23°C)

Vorteile:

- der eingestellte Druck kann nicht manipuliert werden,
- Typ Trinkwasser entspricht NSF / ANSI 61 und 372

FRANÇAIS

Fonction:

Réducteur de pression préconfiguré non rétro-réglable

Matériaux:

Type standard: Boîtier: laiton nickélé, éléments internes: laiton, Membrane et joints: NBR, type eau potable: Boîtier: PA, éléments internes: inox, membrane: EPDM, joints: FKM

Plage de température:

+4°C à +60°C

Pression d'entrée:

max. 10 bar (type eau potable: max. 15 bar)

Débit* :

10 l/min

Fluides:

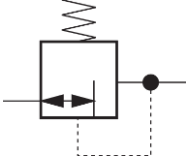
Eau (type eau potable, mais aussi eau potable et produits alimentaires)

Avantages:

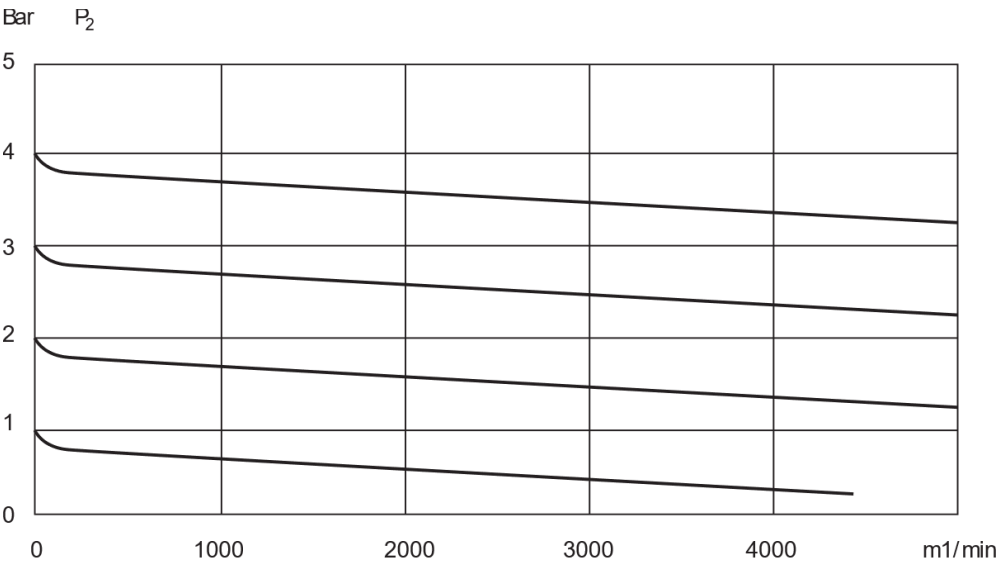
- La pression réglée ne peut pas être manipulée,
- Type eau potable correspond à NSF / ANSI 61 et 372

The inline water pressure regulator is a single-acting diaphragm regulator. It can be installed in any water pipe system. The regulator always provides the preset output value, regardless of the input pressure. The pressure is factory-set and cannot be changed, ensuring that no one manipulates the specified pressure. The regulator should be mounted directly on the machine/plant to supply it with the correct pressure. This ensures the machine/plant is not stressed by the high pressure of the supply system and is protected from pressure fluctuations. The system must be depressurized for assembly/disassembly. When installing, pay attention to the direction of flow (arrow on the regulator's surface). For maintenance, the system must be depressurized on the inlet and outlet sides. Do not disassemble the regulator.

Circuit diagram



Pressure loss diagram



Dimensions

