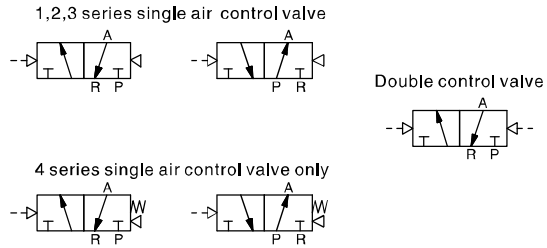


# RV Series Air Control Valve (3/2 way)

## RV

### Air Control Valve (3/2)



### How to Order?

Series No.	Ways	Positions	Valve Body ID Code	Controls	Initial Status	Port Size	Reset Type	Thread Type
RVA	3: 3 ways	2:2 positions	1: 1Series 2: 2Series 3: 3Series 4: 4Series	1: Single control 2: Double control	Blank: Normal close(N,C) H: Normal open(N.O)	M5: M5 06: 1/8" 08: 1/4" 10: 3/8" 15: 1/2"	Blank: Spring return (Apply to 4 series single control valve) Q: Air return (Apply to 1,2,3 series single control valve)	Blank: G P: PT T: NPT

#### Order Example:

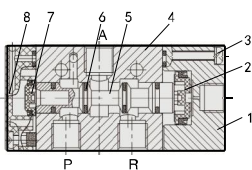
RVA series air control valve, 3/2 way, 2 series valve body size, single control, NC type, 1/4" port size, air return, PT thread  
ERP code is: RVA3221-08Q-P

### Specifications

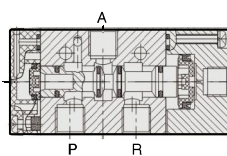
Model No.	RVA3211-M5 RVA3212-M5	RVA3211-06 RVA3212-06	RVA3221-06 RVA3222-06	RVA3221-08 RVA3222-08	RVA3231-08 RVA3232-08	RVA3231-10 RVA3232-10	RVA3241-10 RVA3242-10	RVA3241-15 RVA3242-15
Port size	M5	G1/8	G1/8	G1/4	G1/4	G3/8	G3/8	G1/2
Sectional area(mm)	5.5(CV=0.31)	12(CV=0.67)	14(CV=0.78)	16(CV=0.89)	25(CV=1.40)	30(CV=1.68)	50(CV=2.79)	50(CV=2.79)
Working medium	Clean air(After 40 μm filtration )							
Acting type	External type							
Reset type	Air reset						Spring reset /Air reset	
Lubrication	Not required							
Working pressure(MPa)	0.15~0.8							
Guaranteed Pressure(MPa)	1.2							
Working temperature(°C)	-20~70(No freezing)							
Max. acting frequency	5 Cycles/s							
Weight(g)	RVA3211:60 RVA3212:75		RVA3221:116 RVA3222:143		RVA3231:187 RVA3232:220		RVA3241:378 RVA3242:430	

### Internal Structure

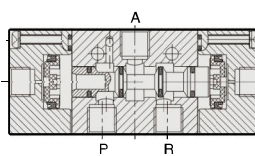
#### Single Air Control(N.C)



#### Double Air Control(N.O)



#### 5/3 Ways Solenoid Valve



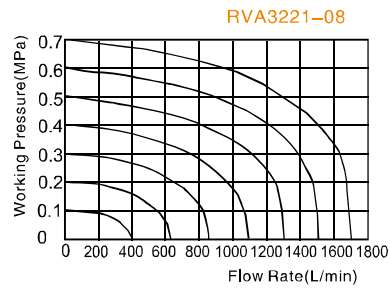
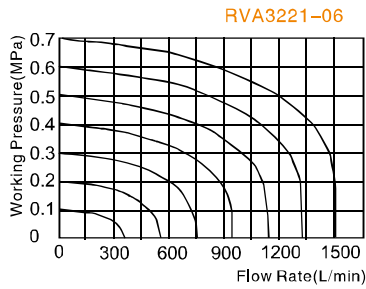
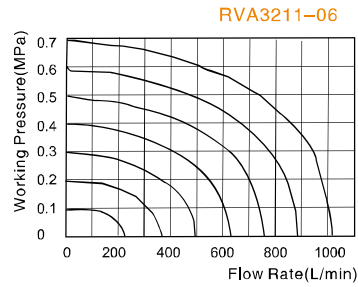
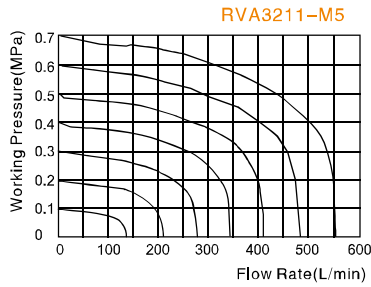
No.	Part Name	Material
1	Air Control Cover	Aluminum Alloy
2	Piston	POM
3	Screw	Carbon Steel
4	Valve Body	Aluminum Alloy
5	Spool	Aluminum Alloy
6	O-ring	NBR
7	Piston	POM
8	Rear Cover	Zinc Alloy

# RV Series Air Control Valve (3/2 way)



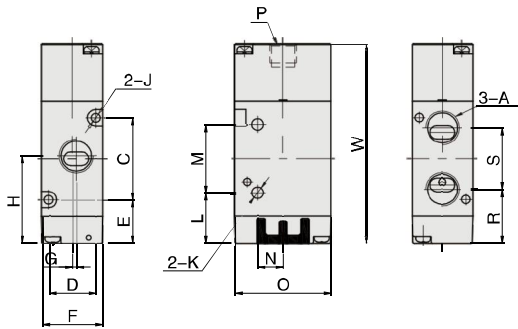
1  
RVA(2/3)

## Flow Chart

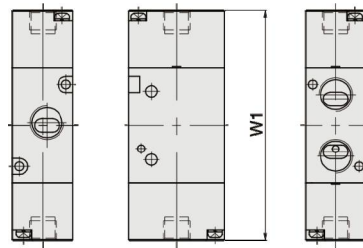


## Main Dimension

### Single Air Control



### Double Air Control



Model/Sign	A	C	D	E	F	G	H	J	K	L	M	N	O	P	R	S	W	W1*
RVA3211-M5	M5	19	13	16,5	18	0	26	3,3	3,1	15,5	21	6	27	G1/8	18,9	14,2	61	70
RVA3211-06	G1/8	19	13	16,5	18	1,5	27	3,3	3,1	15,5	21	6	27	G1/8	18	16	61	70
RVA3221-06	G1/8	30	17	16	22	0	31	3,3	4,2	18,5	25	9,3	35	G1/8	20	22	73	84
RVA3221-08	G1/4	30	17	16	22	1,5	32	3,3	4,2	18,5	25	9,3	35	G1/8	19,8	22,5	73	84
RVA3231-08	G1/4	35	20	19,1	27	0	36,6	4,3	4,3	21,6	30	9,5	40	G1/8	24,6	24	84,6	96
RVA3231-10	G3/8	35	20	19,1	27	2	36,6	4,3	4,3	21,6	30	9,5	40	G1/8	24,6	24	84,6	96
RVA3241-10	G3/8	40,5	27	24,8	34	0	45	4,3	5,2	21	48	11,5	50	G1/8	29,3	31,5	103	116
RVA3241-15	G1/2	40,5	27	24,8	34	2	45	4,3	5,2	21	48	11,5	50	G1/8	29,3	31,5	103	116

Note: The dimension of N.O type and N.C type are same, W1\* is the dimension of double control type.