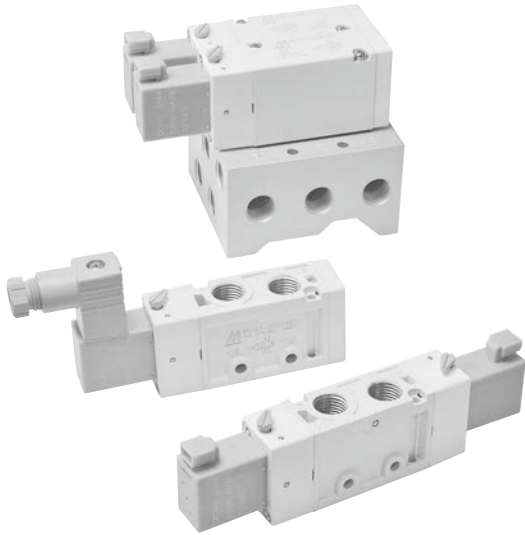


# MVSC1-220 series

## SOLENOID VALVE



mindman

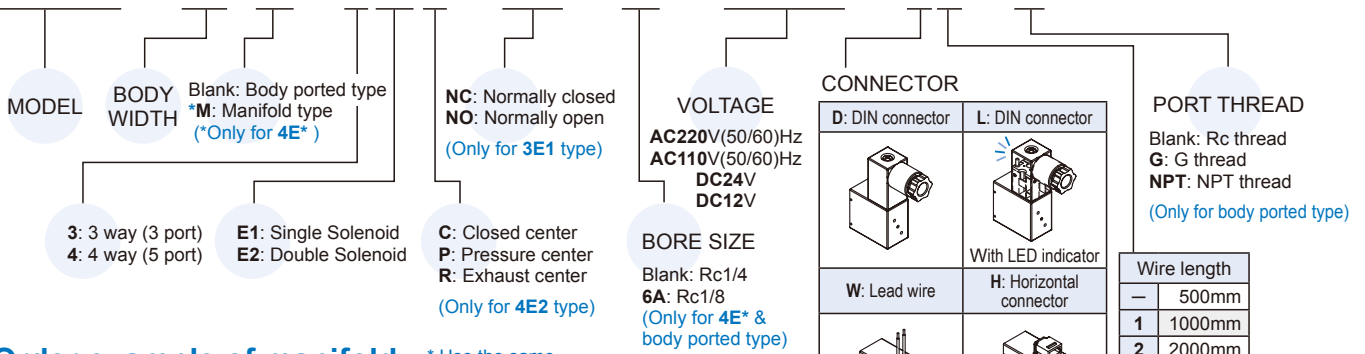


### Specification

| Model                    | 3E1                              | 3E2   | 4E1          | 4E2                | 4E2 C.P.R |
|--------------------------|----------------------------------|-------|--------------|--------------------|-----------|
| Port size                | Rc1/4                            |       | Rc1/8, Rc1/4 |                    |           |
| No. of port / position   | 3 / 2                            |       | 5 / 2        |                    | 5 / 3     |
| Medium                   | Air                              |       |              |                    |           |
| Operating perssure range | 0.2~0.8 MPa                      |       |              | 0.3~0.8 MPa        |           |
| Proof pressure           | 1 MPa                            |       |              |                    |           |
| Effective orifice        | 18 mm <sup>2</sup>               |       |              | 16 mm <sup>2</sup> |           |
| Reponse time             | DC < 30ms, AC < 35ms             |       |              | DC<40ms, AC<50ms   |           |
| Ambient temperature      | -5~+50°C (No freezing)           |       |              |                    |           |
| Voltage                  | AC110V, 220V (50/60)Hz, DC24/12V |       |              |                    |           |
| Power consumption        | AC=1.12VA, DC=0.95W              |       |              |                    |           |
| Available voltage range  | ±10%                             |       |              |                    |           |
| Insulation class         | F class                          |       |              |                    |           |
| Weight                   | 86 g                             | 130 g | 108 g        | 152 g              | 198 g     |

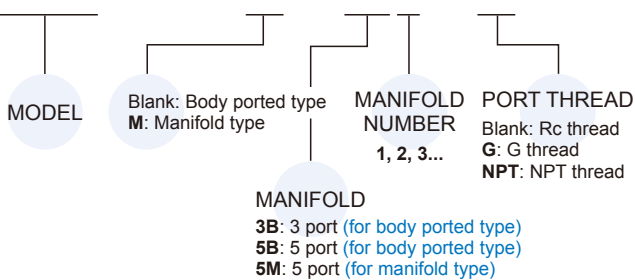
### Order example of valve

**MVSC1 – 220M – 4E2C – NC – □ – AC110 – H1 – G**



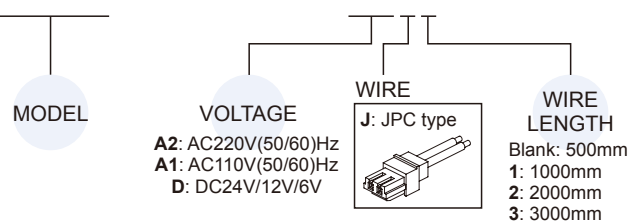
### Order example of manifold

**MVSC – 220M – 5B3 – G**



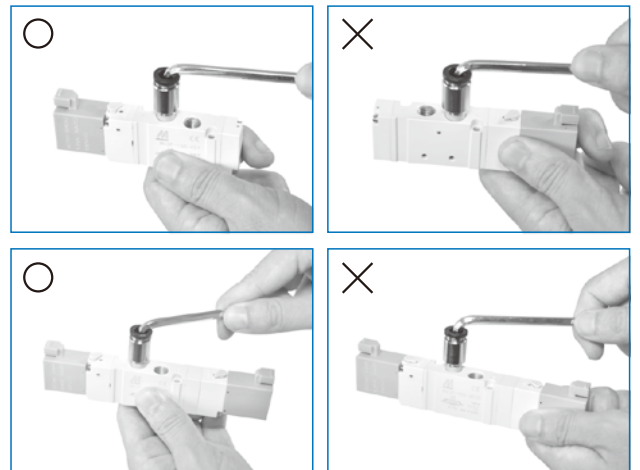
### Order example of wire

**MVDY – 100 – WA2J2**



### Caution

Prohibit apply force to coil when tighten the tube fitting.

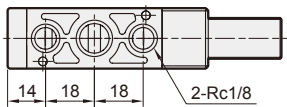
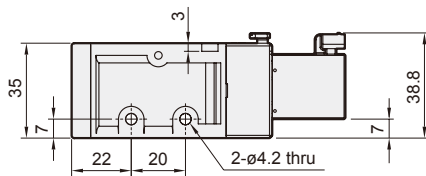
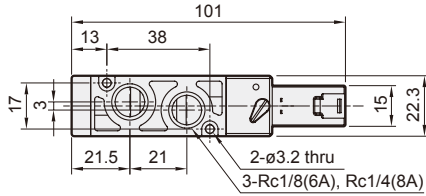
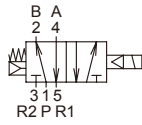


# MVSC1-220 Dimensions

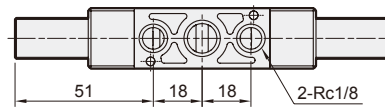
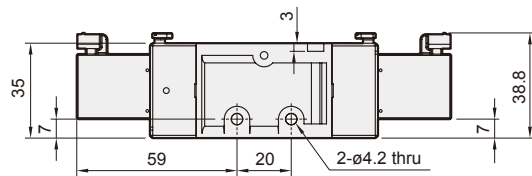
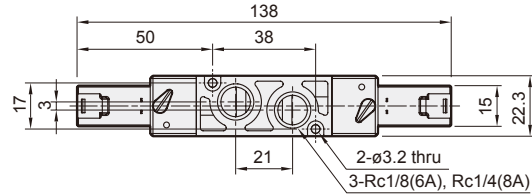
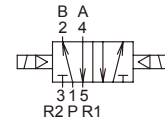
## SOLENOID VALVE



### MVSC1-220-4E1

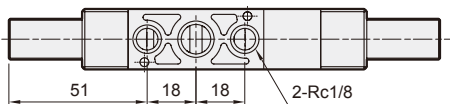
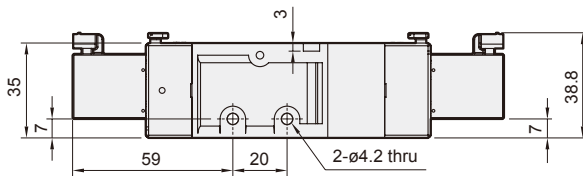
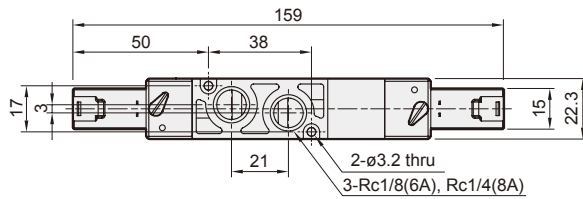
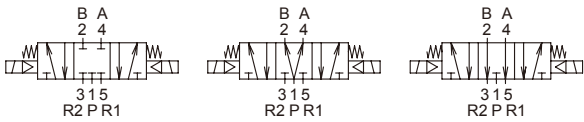


### MVSC1-220-4E2

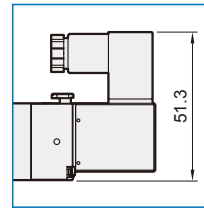


### MVSC1-220-4E2C.PR

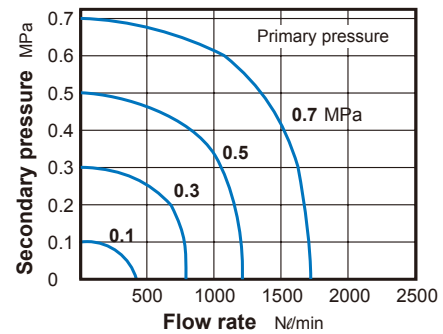
MVSC1-220-4E2C MVSC1-220-4E2P MVSC1-220-4E2R



### DIN connector / DIN connector with LED indicator



### Flow features

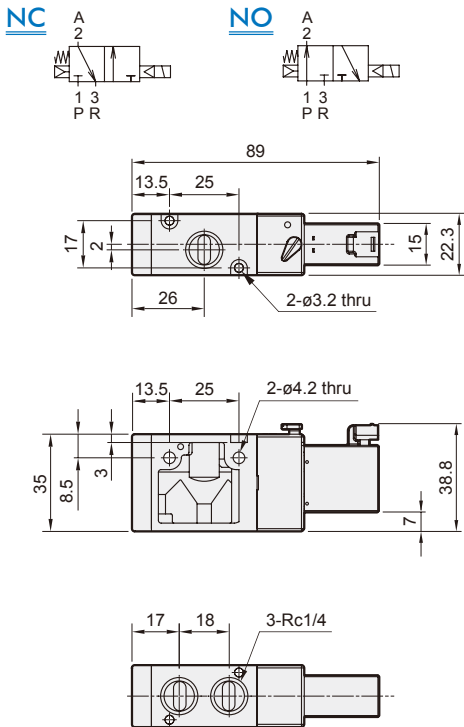


# MVSC1-220 Dimensions / Manifold

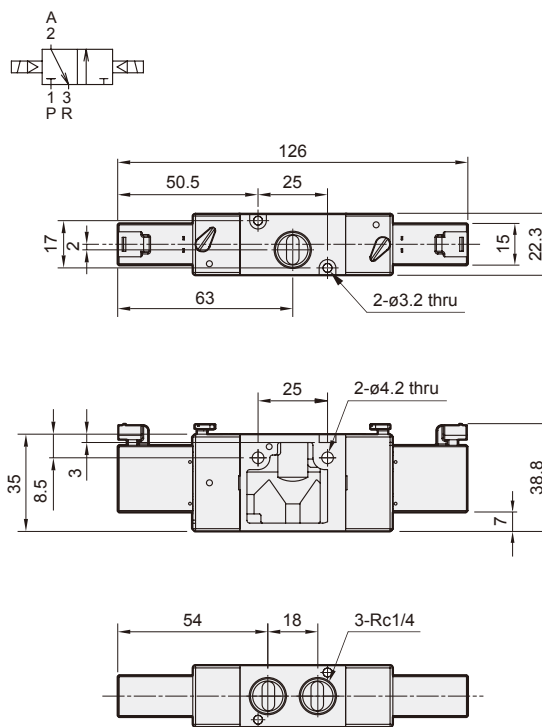
## SOLENOID VALVE



### MVSC1-220-3E1-NC/NO



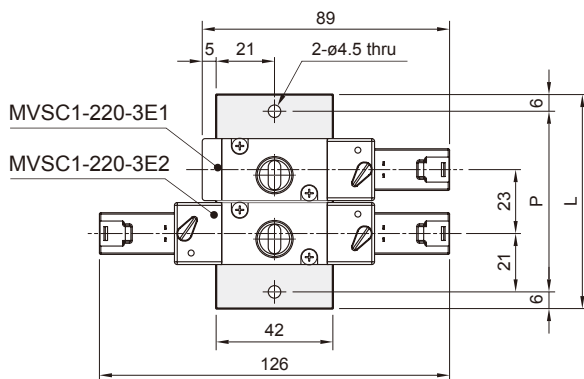
### MVSC1-220-3E2



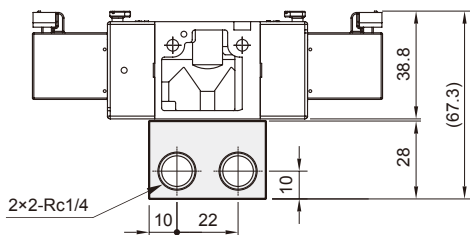
### MVSC-220-3B\*

\* Use the same manifold with MVSC.

3 port (for body ported type)



| No. of stations | P   | L   |
|-----------------|-----|-----|
| 2               | 65  | 77  |
| 3               | 88  | 100 |
| 4               | 111 | 123 |
| 5               | 134 | 146 |
| 6               | 157 | 169 |
| 7               | 180 | 192 |
| 8               | 203 | 215 |
| 9               | 226 | 238 |
| 10              | 249 | 261 |



# MVSC1-220 Manifold

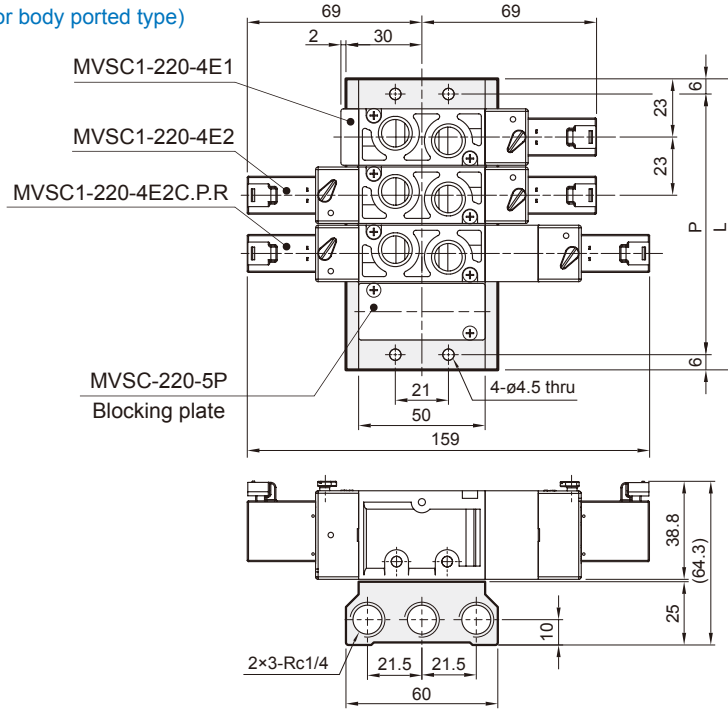
## SOLENOID VALVE



### MVSC-220-5B\*

\* Use the same manifold with MVSC.

5 port (for body ported type)

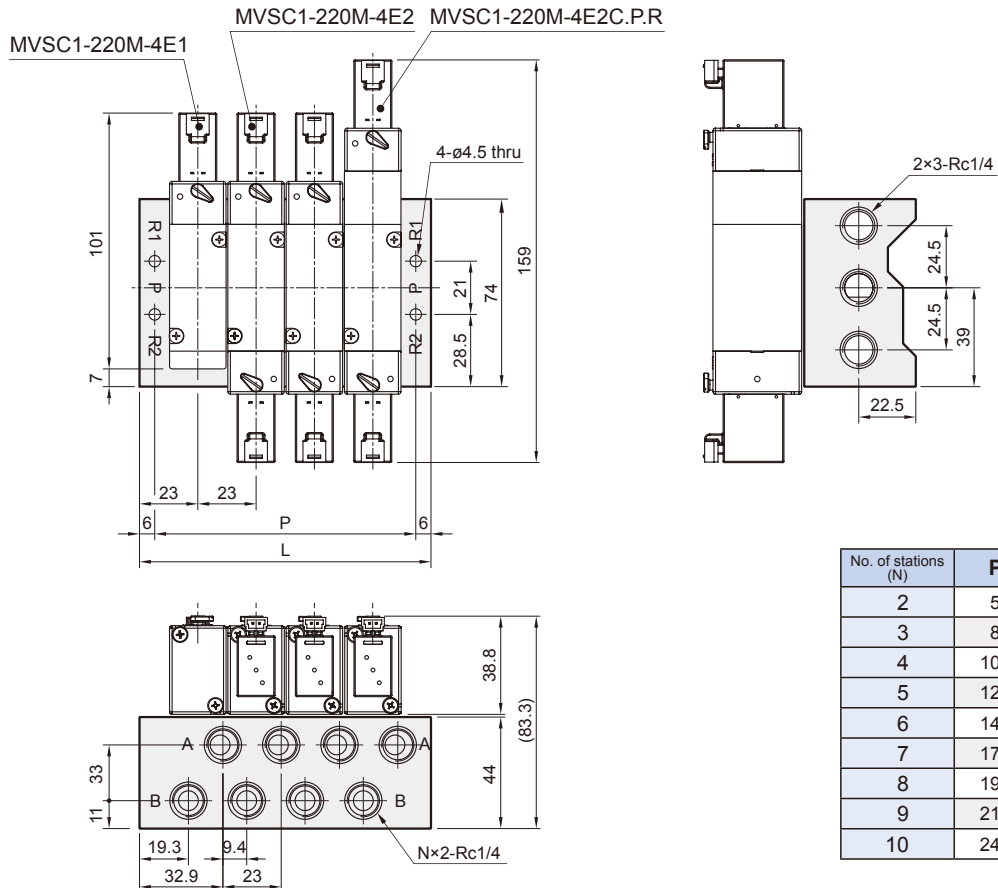


| No. of stations | P   | L   |
|-----------------|-----|-----|
| 2               | 57  | 69  |
| 3               | 80  | 92  |
| 4               | 103 | 115 |
| 5               | 126 | 138 |
| 6               | 149 | 161 |
| 7               | 172 | 184 |
| 8               | 195 | 207 |
| 9               | 218 | 230 |
| 10              | 241 | 253 |

### MVSC-220M-5M\*

\* Use the same manifold with MVSC.

5 port (for manifold type)



| No. of stations (N) | P   | L   |
|---------------------|-----|-----|
| 2                   | 57  | 69  |
| 3                   | 80  | 92  |
| 4                   | 103 | 115 |
| 5                   | 126 | 138 |
| 6                   | 149 | 161 |
| 7                   | 172 | 184 |
| 8                   | 195 | 207 |
| 9                   | 218 | 230 |
| 10                  | 241 | 253 |