

**DIDLH 8 H295 D300 BS (253 115)**

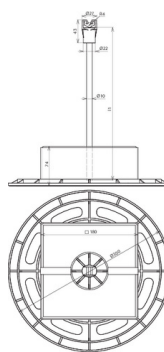
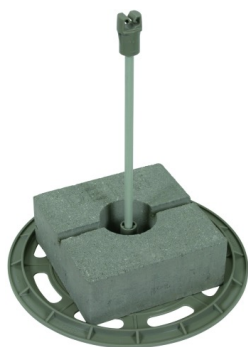


Figure without obligation

| Type   | DIDLH 8 H295 D300 BS                           |
|--|--|
| Part No.   | 253 115  |
| Conductor support Rd                                     | 8 mm   |
| Material of roof conductor holder                        | plastic / GRP                                  |
| Length (l1)  | 295 mm   |
| Insulating clearance                                     | 220 mm   |
| Diameter Ø of conductor holder lock bush                 | 10 mm  |
| Diameter Ø of spacer                                     | 10 mm  |
| Colour of spacer   | light grey (RAL 7035) •                        |
| Conductor routing  | loose  |
| Material of spacer                                       | GRP  |
| Material factor km                                       | 0.7  |
| Permanent temperature range                              | -30 °C ... +80 °C                              |
| Type   | UV stabilised and weather resistant            |
| Max. gust wind speed (holder distance 1200 mm, Al Ø8 mm) | 179 km/h                                       |
| Standard   | Based on DIN IEC/TS 62561-8 (VDE V 0185-561-8) |
| Weight   | 4,82 kg  |
| Customs tariff number                                    | 85389099                                       |
| GTIN   | 4013364129870                                  |
| PU   | 24 Stk   |

We reserve the right to introduce changes in performance, configuration and technology, dimensions, weights and materials in the course of technical progress. The figures are shown without obligation.