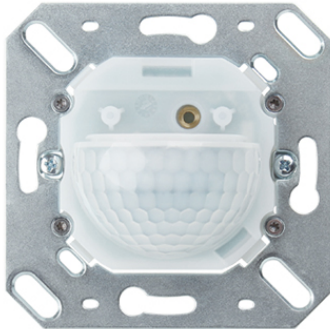
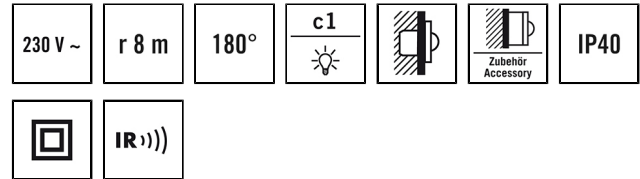


## MD 180i/16 BASIC

**Item number** EB10430459  
**GTIN** 4015120430459



### Technical data

GENERAL	
Device category	Wall-mounted motion detector
Product information	Please note the Explanation of circuit breaker in the download area of the product!
User interface	IR remote control
Remote controllable	✓
Conformity	CE, EAC, RoHS, WEEE
Warranty	5 years
ATTACHMENT	
Installation type	Flush-mounted/Device socket Ø 68 mm
Installation position	Wall
Installation dimension	Installation depth: 23 mm, Ø 60 mm
Type of connection	Push terminal
Connectable wire cross section	0.75 – 2.5 mm <sup>2</sup>
HOUSING	
Dimensions	Length 70 mm x Width 70 mm x Height/Depth 53 mm
Weight	72.466 g
Material	UV-stabilised polycarbonate
Protection type	IP40
Permissible ambient temperature	0 °C...+50 °C
Relative humidity	5 – 93 %, non-condensing
Colour	opal matt
ELECTRICAL VERSION	
Control system	ON/OFF
Protection class	II
Nominal voltage	230 V ~ / 50 Hz

### Product description

- Wall-mounted motion detector with 180° field of detection
- 16 A high-performance relay (tungsten pre-contact)
- Programmable by remote control
- Compatible with brand switches
- IP40 degree of protection
- Integrated impulse function for activation of automatic stairwell lights or signalling devices
- Switch input

### Offers special product features like:

- Simple parameterisation, remote control and documentation with ESY-Pen and ESY-App

In-rush current	800 A / 200 µs
Power consumption	0.2 W

### SENSORS

Detection angle	180° horizontal, 60° vertical
Detection range diagonally	Ø 16 m
Detection range head-on	Ø 12 m
Field of detection	up to 101 m <sup>2</sup>
Recommended installation height	1.1 m
Max. mounting height	2.2 m
Light measurement	mixed light
Level of brightness	5 – 2000 lx

### CHANNELS (LIGHTING / HVAC)

Number of light channels	1
Push button input lighting	1
Push button input HVAC	–
Number of parallel switchable detectors	6
Slave input	–
Mode	Semi-automatic, Fully automatic
Switching delay from "dark to light"	300 s
Switching delay from "light to dark"	30 s
Constant light control	–
Channel	C1 Lighting
Function	Switching
Switching capacity	230 V/50 Hz 2300 W/10 A (cos phi = 1) 1150 VA/5 A (cos phi = 0,5) 600 W LED
Switch contact	make contact / non-floating

## MD 180i/16 BASIC

Item number	GTIN
EB10430459	4015120430459

Push button input	✓	Switch-off delay time	60 s...60 min (adjustable in steps)
Impulse mode	✓		

### Factory settings

GENERAL		CHANNELS (LIGHTING / HVAC)	
Sensitivity	100 %	Channel	C1 Lighting
		Level of brightness/switching threshold	100 lx
		Switch-off delay time	5 min

### Accessories

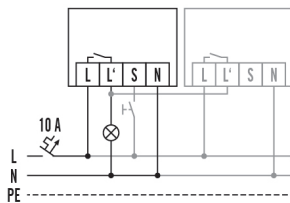
Product designation	Item number	Product description	GTIN
<b>Cover</b>			
COVER IP20 WH	EM10055102	Cover for wall detectors from the STANDARD series, IP20, white, similar to RAL 9010	4015120055102
COVER IP20 SWH	EM10055119	Cover for wall detectors from the STANDARD series, IP20, white, similar to RAL 9016	4015120055119
COVER IP20 CWH	EM10055126	Cover for wall detectors from the STANDARD series, IP20, white, similar to RAL 1013	4015120055126
COVER IP20 AN	EM10055133	Cover for wall detectors from the STANDARD series, IP20, anthracite, similar to RAL 7021	4015120055133
COVER IP20 SR	EM10055140	Cover for wall detectors from the STANDARD series, IP20, silver	4015120055140
COVER IP44 WH	EM10055157	Cover for wall detectors from the STANDARD series, IP44, white	4015120055157
COVER ELK RS/PLUS IP20 WH	EM10055270	Cover for wall detector fits with Elko RS/PLUS, IP20, white	4015120055270
COVER SEL Trend IP20 WH	EM10055287	Cover for wall detector fits with Schneider Electric Trend, IP20, white	4015120055287
COVER SEL EXX IP20 WH	EM10055294	Cover for wall detector fits with Schneider Electric Exact, IP20, white	4015120055294
COVER BER S1 IP20 PWH	EP10427107	Cover for wall detector fits with Berker S.1, IP20, polar white	4015120427107
COVER BER S1 IP20 WH	EP10427114	Cover for wall detector fits with Berker S.1, IP20, white	4015120427114
COVER BER MOD2 IP20 WH	EP10427138	Cover for wall detector fits with Berker module 2, IP20, white	4015120427138
COVER BUJ REF IP20 WH	EP10427145	Cover for wall detector fits with Busch-Jäger Reflex, IP20, white	4015120427145
Cover IP20-BJSI cream	EP10427152	Cover for wall detector fits with Busch-Jäger Reflex, IP20, cream white	4015120427152
COVER GIR S55 IP20 WH	EP10427169	Cover for wall detector fits with Gira Standard 55, IP20, white	4015120427169
COVER GIR S55 IP20 CWH	EP10427176	Cover for wall detector fits with Gira Standard 55, IP20, cream white	4015120427176
<b>Electrical accessories</b>			
FILTER 230 V	EP10426988	Filter for suppression of inductive loads, such as relays, contactors, fluorescent lamps and transformers	4015120426988
<b>Mounting</b>			
MOUNTING BOX IP44 SM WH	EM10055164	Surface-mounted box for wall detectors from the STANDARD series, IP44, white	4015120055164
<b>Remote control</b>			
ESY-Pen	EP10425356	ESY-Pen and ESY-App, two tools for every task: (1) Parameterisation, (2) remote control, (3) light measurement, (4) project management	4015120425356
REMOTE CONTROL MDi/PDi	EM10425509	IR remote control for presence detectors and motion detectors	4015120425509

## MD 180i/16 BASIC

**Item number**      **GTIN**  
 EB10430459      4015120430459

Dimension drawing	Field of detections	Detection range	
		<p>■ Diagonally (A)</p>	<p>Ø 16 m</p>
		<p>■ Frontal (B)</p>	<p>Ø 12 m</p>

### Circuit diagram



*Standard with optional control via a closing button and parallel wiring of max. six devices.*

### Detailed product description

- Wall-mounted motion detector with 180° field of detection
- 16 A high-performance relay (tungsten pre-contact)
- Specially designed for switching capacitive loads such as electronic ballasts, parallel-compensated fluorescent lamps, compact fluorescent lamps, energy-efficient lamps
- Can be parameterised by remote control, e.g. continuous lighting ON/OFF and automatic reading function of the current light value
- Cover frame in five different colours and compatible with brand switches; therefore can be used to replace any conventional switch
- IP 40 version, suitable for damp rooms, garages, basement access ways
- Vandal-proof cover with stainless steel screws (accessory)
- Universal surface-mounted box IP 20/IP 44 with triple diaphragm line entrance
- In-built impulse feature for controlling automatic stairwell lights or control devices, and for use in facility management/PLC