

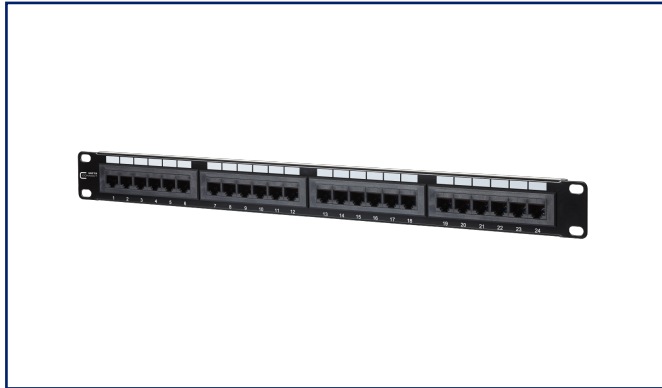
## Data sheet

### UTP 24 port 1RU LSA Cat.5e patch panel

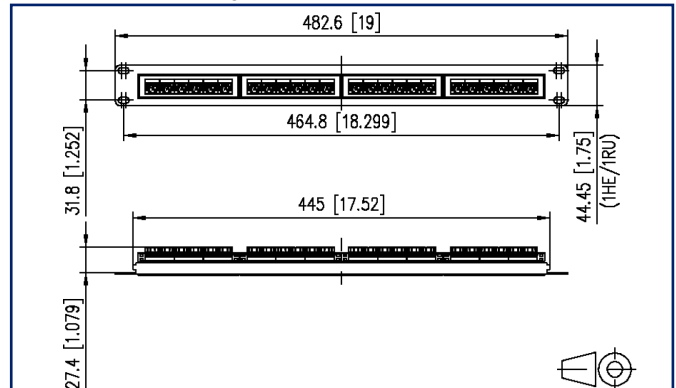
Page 1/6

P/N  
130A08-AP29-E  
EAN 4250184169833  
2022/07/15  
Version: X

## Illustrations



Dimensional drawing



See enlarged drawings at the end of document

## Product specification

- 19 inch 1RU Cat.5e patch panel with 24 RJ45 ports 8(8)
- 19 inch module frame made of black sheet steel
- 4 individual 6 port connection blocks, unshielded
- connection of the unshielded data cables to LSA insulation displacement connectors (AWG 22 to 26)
- wire connection possible according to T568A and T568B
- with 4 clip-in plastic cable brackets
- punch down patch panel



# P | Cabling

Data sheet

Page 2/6

## UTP 24 port 1RU LSA Cat.5e patch panel

P/N

130A08-AP29-E

EAN 4250184169833

2022/07/15

Version: X

### Technical Data

#### General Data

Fields of application	data center
Mechanical measurement according to MICE	M1
Ingress measurement according to MICE	I1
Climatic measurement according to MICE	C1
Electromagnetic measurement according to MICE	E1
Design	patch panel
Mounting style	1RU
Shielding	unshielded
Transmission technology	Copper
Wiring	T568A, T568B
Color	black
Dimensions	
Dimension (L x W x H)	27.4 mm x 482.6 mm x 44.45 mm
Dimension (L x W x H)	1.079 in. x 19 in. x 1.75 in.
Inches	19 inches
Height unit	1RU
Labeling option	firmly printed label areas

#### Transmission characteristics

Category (ISO)	5e
Category (TIA)	5e
PoE	IEEE 802.3af
PoE plus	IEEE 802.3at
UPoE	yes
Transmission rate up to 100 MBit (Fast Ethernet)	IEEE 802.3bw
Transmission rate up to 1 GBit (Fast Ethernet)	IEEE 902.3ab

#### Connections/interfaces

Connector technology interface 1	LSA terminal block
Connector technology interface 2	RJ45-jack
Number of ports interface 2	24
Number of ports interface 2 equipped	24
Number of positions/contacts interface 1	24 x 8

# P | Cabling

Data sheet

Page 3/6

## UTP 24 port 1RU LSA Cat.5e patch panel

P/N

130A08-AP29-E

EAN 4250184169833

2022/07/15

Version: X

### Technical Data

Connections/interfaces	
Number of positions/contacts interface 2	24 x 8P/8C
Termination data, solid wire (min. - max.)	
Conductor cross section, solid wire	AWG 26/1 - AWG 22/1
Conductor cross section, solid wire	0.128 mm <sup>2</sup> - 0.324 mm <sup>2</sup>
Conductor diameter, solid wire (bare copper)	0.409 mm - 0.643 mm
Conductor diameter, solid wire (bare copper)	0.016 in. - 0.025 in.
Cable access/outlet	180°
Electrical characteristics	
Current carrying capacity	max. 1 A at 60 °C
Rated voltage	max. 60 V
Contact resistance	max. 20 mOhm
Through resistance	max. 200 mOhm
Insulation resistance	min. 500 MOhm
Dielectric strength conductor-conductor (secondary)	min. 1000 V DC
Dielectric strength conductor-conductor, peak value (secondary)	max. 1.000 V AC
Mechanical data	
Insertion and withdrawal force	max. 20 N
Life - Number of mating cycles	min. 750
Position/mounting of latch standard installation position	bottom
Materials and material properties	
Material - Module support	sheet steel
Halogen free	yes
Silicone free	no paint wetting interfering substances (LaBS) in the process chain
LaBS Note	subsequent contamination possible due to handling and possible storage in your company
RoHS	compliant
REACH	compliant

# P | Cabling

Data sheet

Page 4/6

## UTP 24 port 1RU LSA Cat.5e patch panel

P/N

130A08-AP29-E

EAN 4250184169833

2022/07/15

Version: X

### Technical Data

#### Environmental conditions

Temperature (min. - max.)

Temperature - Storage °C -40 °C - 70 °C

Temperature - Storage °F -40 °F - 158 °F

Temperature - Operating °C -40 °C - 70 °C

Temperature - Operating °F -40 °F - 158 °F

#### Standards/Regulations

Generic cabling systems

General requirements ISO/IEC 11801-1:2017-11 | DIN EN 50173-1:2018-10  
ANSI/TIA-568.2-D

Office buildings ISO/IEC 11801-2:2017-11 | DIN EN 50173-2:2018-10  
ANSI/TIA-568.2-D

Living units ISO/IEC 11801-4:2017-11 | DIN EN 50173-4:2018-10  
ANSI/TIA-570-D

Data centers ISO/IEC 11801-5:2017-11 | DIN EN 50173-5:2018-10  
ANSI/TIA-942-B

#### Classifications

ETIM 5.0 EC001128

ETIM 6.0 EC001128

ETIM 7.0 EC001128

ETIM 8.0 EC001128

#### Packing details

Type of packaging 1 pc(s) / box

Packaging unit - Weight (gram) 1020 g

Packaging unit - Weight (pound) 2.25 lb

Packaging dimension 400 mm x 400 mm x 400 mm

Packaging dimension 15.748 in. x 15.748 in. x 15.748 in.

# P | Cabling

Data sheet

Page 5/6

## UTP 24 port 1RU LSA Cat.5e patch panel

P/N

130A08-AP29-E

EAN 4250184169833

2022/07/15

Version: X

### Accessories

P/N	Designation
130792	Mounting kit, cage nuts M6
130818-E	Crimp Tool LSA-PLUS®



# P | Cabling

Data sheet

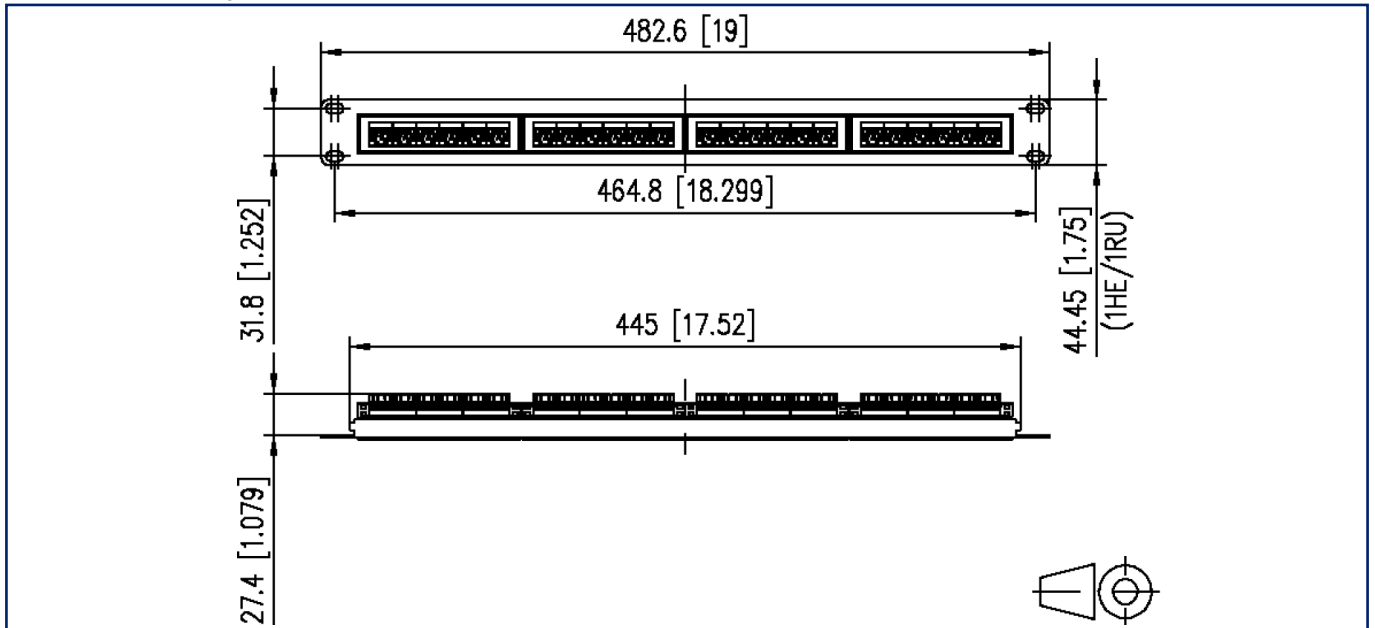
Page 6/6

## UTP 24 port 1RU LSA Cat.5e patch panel

P/N  
130A08-AP29-E  
EAN 4250184169833  
2022/07/15  
Version: X

### Illustrations

Dimensional drawing



© 2022 METZ CONNECT - Technische Änderungen vorbehalten! Subject to modifications! Sous réserve de modifications techniques!