

Rittal – The System.

Faster – better – everywhere.

► Wiring plan pocket of sheet steel for VX, TS, CM, SE, PC, TP pedestal – PS 4116.000

Date : Jun 19, 2019

ENCLOSURES

POWER DISTRIBUTION

CLIMATE CONTROL

IT INFRASTRUCTURE

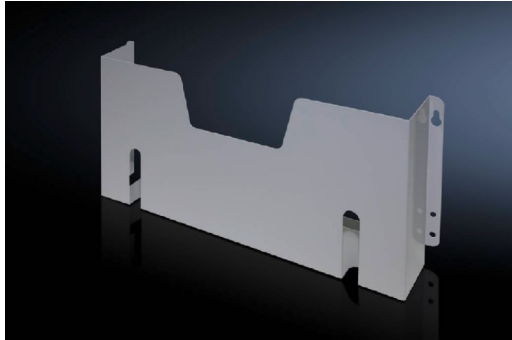
SOFTWARE & SERVICES

FRIEDHELM LOH GROUP



Wiring plan pocket of sheet steel for VX, TS, CM, SE, PC, TP pedestal – PS 4116.000

created: 19.06.2019 on www.rittal.com/com-en



Product description

Description: For fastening to tubular door frames at any height.

Colour: RAL 7035

Supply includes: Assembly parts

Product features

Dimensions: Depth: 90 mm

To fit door width: 600 mm

Clearances: Clearance width: 455 mm
Clearance height: 210 mm

Packs of: 1 pc(s).

Weight/pack: 2.16 kg

Copper weight (kg per piece): 0

EAN: 4028177091818

Customs tariff number: 73269098

ETIM 6.0: EC000317

ETIM 5.0:	EC000317
eCl@ss 8.0/8.1:	27189267
eCl@ss 7.0/7.1:	27189267
eCl@ss 6.0/6.1:	27189267
eCl@ss 5.1/5.1.4:	27189236
Product description:	PS Wiring plan pockets, for TS, CM, SE, PC, TP pedestal, sheet steel, for door width: 600 mm, D: 90 mm