

Rittal – The System.

Faster – better – everywhere.

Section for cable entry, rear for VX – VX 8618.813

Date : Jun 17, 2019

ENCLOSURES

POWER DISTRIBUTION

CLIMATE CONTROL

IT INFRASTRUCTURE

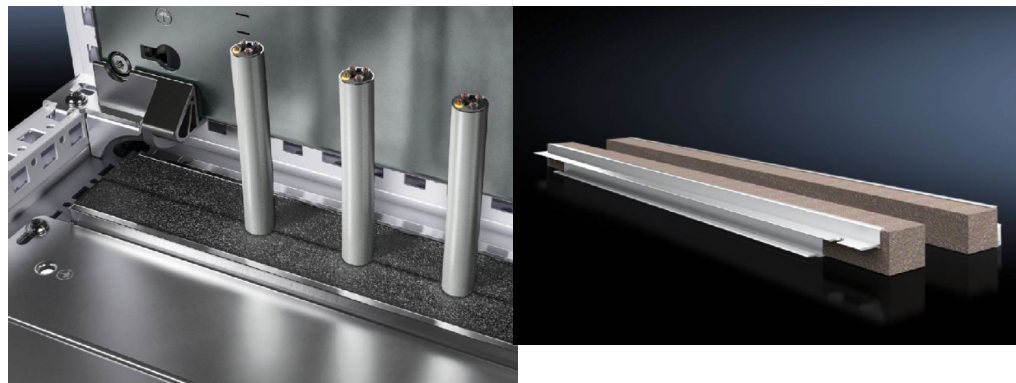
SOFTWARE & SERVICES

FRIEDHELM LOH GROUP



Section for cable entry, rear for VX – VX 8618.813

created: 17.06.2019 on www.rittal.com/com-en



Product description

Benefits:	Simple assembly Full-surface support High level of sealing of cables inserted into the enclosure
Applications:	For top-mounting on gland plates.
Material:	Extruded aluminium section Seal: PU foam Cross-section: 30 x 25 mm
Protection category IP to IEC 60 529:	IP 55 if installed correctly
Supply includes:	Plug-in sections, incl. foam rubber clamp strip
Note:	You will need two pieces per cable entry point. From an enclosure width of 1000 mm, the base assembly is divided into two sections in the width. Two cable entry points (left/right) may be used.

Product features

To fit:	Width: = 1200 mm
Packs of:	4 pc(s).
Weight/pack:	0.43 kg
Copper weight (kg per piece):	0
EAN:	4028177922822

Customs tariff number:	76042990
ETIM 6.0:	EC002624
ETIM 5.0:	EC002624
eCl@ss 8.0/8.1:	27189265
eCl@ss 7.0/7.1:	27400604
eCl@ss 6.0/6.1:	27400604
eCl@ss 5.1/5.1.4:	27189222
Product description:	VX Section for cable entry, rear, for W: 1200 mm