

Sample image





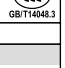

Datasheet

Article number: 70010364


Designation: KG64B.T304.E

Description: Switch Local Disconnecter

IEC 60947-3 EN 60947-3, VDE 0660 Teil 107						
Märkdriftspänning Ui						
			Spänning (V) AC / DC			
			690 AC			
Märkdriftström vid konstant drift						
Ström (A)	Omgivningstemperatur (°C)	Temperatur topp (°C) ytterligare krav				
63	50	55 Omgivningstemperatur +50°C under 24 timmar med toppar upp till +55°C				
Märkdriftström Ie						
Urvals kriterie			Spänning (V)		Ström (A)	
AC-32A			20 - 400		63	
Märkdrifteffekt						
Urvals kriterie	Spänning (V)	No. of phases	No. of poles	Effekt (kW)		
AC-3	220 - 240	3	3	11		
AC-3	380 - 440	3	3	18,50		
AC-3	660 - 690	3	3	15		
AC-23A	220 - 240	3	3	11		
AC-23A	380 - 440	3	3	22		
AC-23A	660 - 690	3	3	18,50		
Max försäkring, IEC						
Säkringskaraktäristik			Antal säkringar		Ström (A)	
gG			1		63	
UL60947-4-1, UL508						
Nominal Voltage						
			Spänning (V) AC / DC			
			600 AC			
Märkdriftspänning Ui						
			Spänning (V) AC / DC			
			600 AC			
Rated thermal current						
		Ström (A)	Omgivningstemperatur (°C)		Additional Text	
		60	0 - 40 -			
Horsepower rating						
<i>Across-the-Line Motor Starting</i>		Spänning (V)	No. of phases	No. of poles	Power (HP)	Ambient temperature [°C]
DOL		110 - 120	1	2	3	40
DOL		220 - 240	1	2	7,50	40
DOL		277 - 277	1	2	7,50	40
DOL		415 - 415	1	2	10	40
DOL		440 - 480	1	2	15	40
DOL		550 - 600	1	2	15	40
DOL		110 - 120	3	3	5	40
DOL		220 - 240	3	3	15	40
DOL		415 - 415	3	3	20	40
DOL		440 - 480	3	3	30	40
DOL		550 - 600	3	3	40	40
SCCR / Max. fuse rating						
<i>Conditions of acceptability</i>						
This device is suitable for use on circuits capable of delivering not more than 10kA rms symmetrical amperes, 600V ac max. when protected by Type RK1 fuses.						
Suitable for use on a circuit capable of delivering not more than 65000 rms symmetrical amperes 600V max., when protected by 70A Class J fuses.						
Temp. rating of wire						
			Temperature rating (°C)	Ström (A) Text		
			60 - 75	-- --		
General Use						
AC / DC	Spänning (V)	Ström (A)	No. of phases	No. of poles	No. of contacts in series	
AC	277	60	1	1	1	
AC	600	60	1	2	1	
AC	600	60	3	3	1	
General Information						
<i>Text</i>						
- The operating handle and position indicating means to be used with these manual motor controllers should be provided from the manufacturer, or the operating handle and position indicating means to be used should have been previously evaluated in combination with the manual motor controllers.						

General Information						
<i>Text</i>						
- När brytaren används som säkerhetsbrytare skall den vara utrustad med vred som är låsbart i läge "0".						
CSA						
Nominal Voltage						
			Spänning (V) AC / DC			
			600 AC			
Märkdriftspänning Ui						
			Spänning (V) AC / DC			
			600 AC			
Rated thermal current						
		Ström (A)	Omgivningstemperatur (°C)		Additional Text	
		60	0 - 40		-	
Horsepower rating						
<i>Across-the-Line Motor Starting</i>						
		Spänning (V)	No. of phases	No. of poles	Power (HP)	Ambient temperature [°C]
DOL		110 - 120	1	2	3	40
DOL		220 - 240	1	2	7,50	40
DOL		277 - 277	1	2	7,50	40
DOL		415 - 415	1	2	10	40
DOL		440 - 480	1	2	15	40
DOL		110 - 120	3	3	5	40
DOL		220 - 240	3	3	15	40
DOL		415 - 415	3	3	20	40
DOL		440 - 480	3	3	30	40
DOL		550 - 600	3	3	40	40
Temp. rating of wire						
			Temperature rating (°C)	Ström (A) Text		
			75	-- --		
General Use						
AC / DC	Spänning (V)	Ström (A)	No. of phases	No. of poles	No. of contacts in series	
AC	277	60	1	1	1	
AC	600	60	1	2	1	
AC	600	60	3	3	1	
GENERAL TECHNICAL INFORMATION						
Tightening torque of screws						
			tightening torque (Nm)	tightening torque (lb-in)		
			1,80	16		
Stripping length						
			Length (mm) -	12 STRIPPINGLENGTH		
Size of conductor						
composition of conductor	Min. / Max. value		No. of conductor per terminal	Cross section (mm ²) or (AWG/kcmil)		Material of the wire
flexible wire	Max.		1	AWG 6		Copper
flexible wire	Max.		1	10mm ²		Copper
Single-core or stranded wire	Max.		1	AWG 6		Copper
Single-core or stranded wire	Max.		1	16mm ²		Copper
flexible wire with sleeve	Max.		1	10mm ²		Copper
Approbations						
<i>Specification</i>					<i>Marking</i>	
EAC						
CE marking						
UK Directives						
CSA C.22.2 No.14						
GB/T14048.3						
Rekomenderad skruvmejsel						
<i>Typ av skruvmejsel</i>		Value				
Stjärnskruvmejsel		PH2				
Slot screwdriver according to DIN 5264		1,2x6,5				
General Information						
<i>Text</i>						
- EMC Note: This device is suitable for use in environment A and B.						
- Smörjning och behandling av kontaktarna är förbjuden.						
- Inkoppling och service av strömställaren får endast utföras av behörig personal. Strömställaren är underhållsfri.						
- Använd endast kopparkabel. Kabeln får inte förtennas.						
- Alla anslutningskruvar måste dras med rekommenderat moment, även de som inte används då det kan finnas interna överkopplingar.						
Waste Electrical & Electronic Equipment (WEEE)						
<i>Picture name</i>		<i>Description</i>				
		Do not throw in the trash as care must be taken to ensure environmentally sound disposal and recycling. Please either use an environmentally friendly waste disposal company, return to the supplier for disposal, or return direct to the manufacturer, Kraus & Naimer. You can find local Kraus & Naimer offices at www.krausnaimer.com				

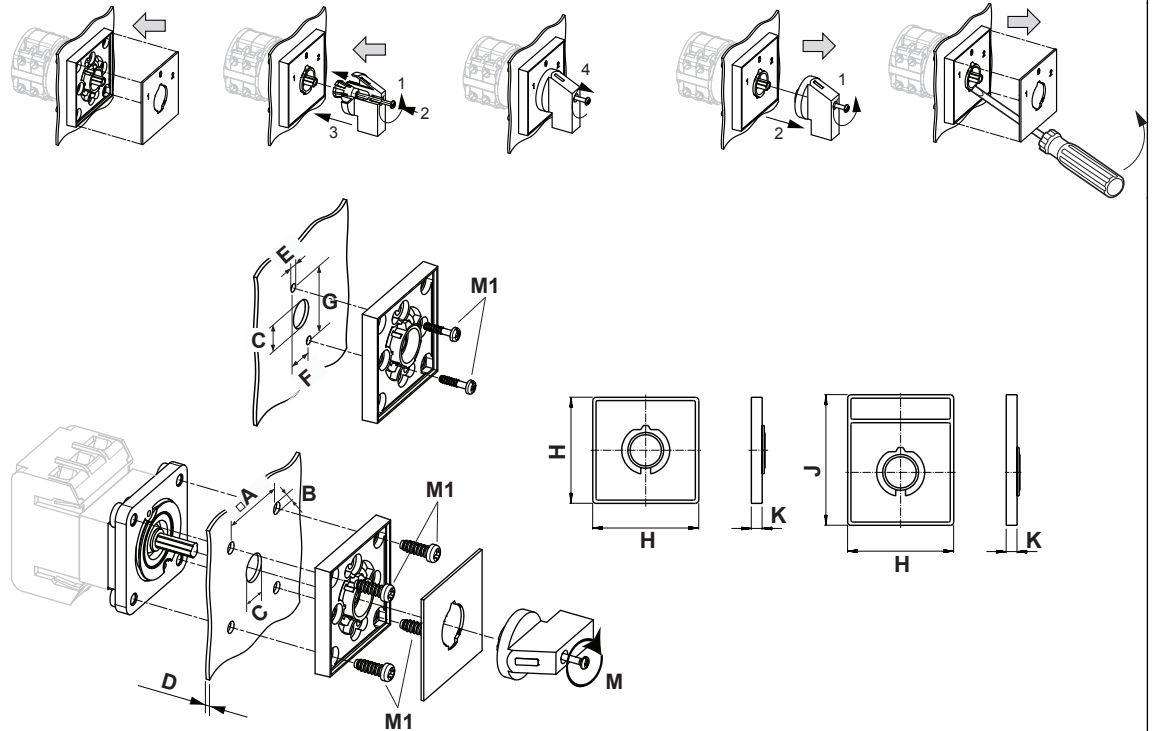
Proposition 65
Picture name *Description*

 **WARNING:** This product can expose you to chemicals including nickel and lead, which is known to the State of California to cause cancer. For more information go to www.P65Warnings.ca.gov.

Classification Contact: Rigid contact bridge

Classification Contact Mat: Silver

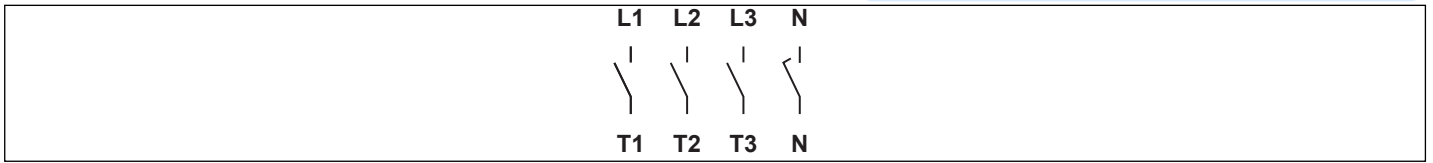
Classification Terminal: Screw terminal

Mounting-E


Skyddsklass frontpanel, IP		IP66, IP67
Stages		1,00 - 12,00
A	□	48,00 mm
B	∅	5,00 mm
C	∅	10,00 - 15,00 mm
D	H	<= 4,00 mm
E	∅	3,50 mm
F	H	12,20 mm
G	H	30,00 mm
H	H	64,00 mm
J	H	78,50 mm
K	H	7,40 mm
M	↺	0,70 Nm
M1	↺	0,90 Nm

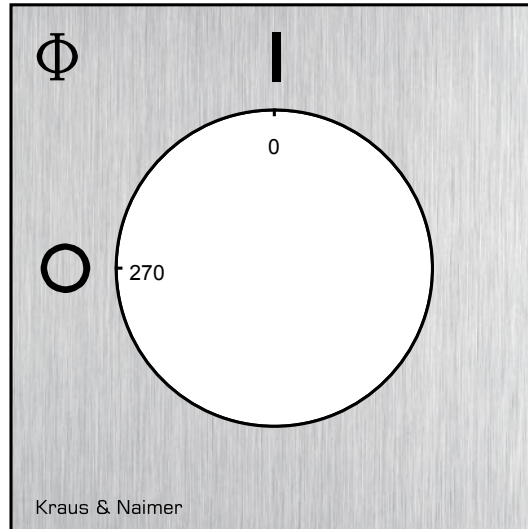
Wiring diagram

KG64B.T304.E



Face plate

S1.F456/A1B.PEL



HANDLES

Designation: S1B.G251
Handle colour: "1" black

