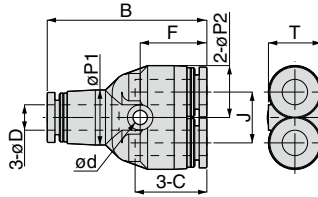


Tube Fitting

FITTING

PY Union Y

RoHS compliant



OP.
P.754

3D
CAD

CAD

Unit : mm

Model code	Tube O.D. øD	B	øP1	øP2	Tube end C	J	ød	F	T	Orifice bore (ømm)	Weight (g)	CAD file name
PY4④	4	32.8	10	10	14.9	11	3.2	14.1	10.4	2.6	7.6	PY4
PY6④	6	37.7	13	12.5	17	12	3.4	15.8	13.5	4.3	11	PY6
PY8④	8	42.4	15	14.5	18.1	14	3.4	17.2	15.1	5.7	16	PY8
PY10④	10	48.4	17.5	17.5	20.7	18	4.2	19.5	18.2	6.7	26	PY10
PY12④	12	54.8	21	21	23.4	20	4.2	22.2	21.7	8	37	PY12
PY16④	16	62.2	25	25	24.1	24	4.5	22.1	25	12.7	45	PY16
PY5/32④	5/32	32.8	10	10	14.9	11	3.2	14.1	10.4	2.6	7.6	PY5_32
PY3/16④	3/16	38.5	13	12.5	17.4	12	3.4	16.2	13.5	3.8	11	PY3_16
PY1/4④	1/4	37.7	13	12.5	17	12	3.4	15.8	13.5	4.7	11	PY1_4
PY5/16④	5/16	42.4	15	14.5	18.1	14	3.4	17.2	15.1	5.7	16	PY5_16
PY3/8④	3/8	48.4	17.5	17.5	20.7	18	4.2	19.5	18.2	6.8	26	PY3_8
PY1/2④	1/2	55.4	21	21	23.7	20	4.2	22.5	21.7	7.9	35	PY1_2

※ 1. ④ in Model code / Replaced with "W" for Light-gray color, "-C" for Clean-room package, "W-C" for Light-gray color and Clean-room package, "-UC" for Clean-wash and Clean-room package

※ 2. Orifice bore is the smallest passage converted in terms of the diameter.