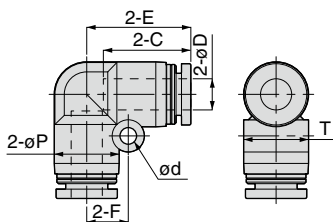


Tube Fitting

FITTING

PV Union Elbow

RoHS compliant



OP.
P.754

3D
CAD

CAD

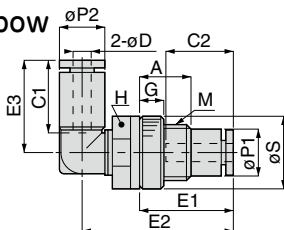
Unit : mm

Model code	Tube O.D. øD	øP	Tube end C	E	ød	F	T	Orifice bore (ømm)	Weight (g)	CAD file name
PV4④	4	10	14.9	16.9	3.2	6.5	10.4	2.8	5.1	PV4
PV6④	6	12.5	17	20.1	3.2	8	13.5	5	7.3	PV6
PV8④	8	15	18.1	22.4	4.2	10	15.6	7.2	11	PV8
PV10④	10	17.5	20.2	26.2	4.2	12	18.2	8.3	17	PV10
PV12④	12	21	23.4	29.4	4.2	14	21.7	10	25	PV12
PV16④	16	25	24.1	33.1	4.2	12	25.6	13	31	PV16
PV5/32④	5/32	10	14.9	16.9	3.2	6.5	10.4	2.8	5.1	PV5_32
PV3/16④	3/16	12.5	17.4	20.5	3.2	8	13.5	4	7.5	PV3_16
PV1/4④	1/4	12.5	17	20.1	3.2	8	13.5	5	7.1	PV1_4
PV5/16④	5/16	15	18.1	22.4	4.2	10	15.6	7.2	11	PV5_16
PV3/8④	3/8	17.5	20.2	26.2	4.2	12	18.2	8.5	18	PV3_8
PV1/2④	1/2	21	23.7	29.7	4.2	14	21.7	10.7	23	PV1_2

71

PML Bulkhead Union Elbow

RoHS compliant



OP.
P.754

3D
CAD

CAD

Unit : mm

Model code	Tube O.D. øD	M	E1	E2	E3	A	øP1	øP2	øS	Tube end C1	Tube end C2	Hex. H	G	Orifice bore (ømm)	Weight (g)	CAD file name
PML4④	4	M12×1.5	20.2	32.8	19.7	10	10	10	16	14.9	14.9	14	5	2.9	11	PML4
PML6④	6	M14×1.5	23.8	37.8	22.8	13	12.3	12.5	19	17	17	17	5	4.6	17	PML6
PML8④	8	M16×1.5	25.7	41.8	25.7	13.5	14.2	14.5	22	18.1	18.1	19	6	5.9	25	PML8
PML10④	10	M20×2	28	47.8	29.5	16.5	17.5	17.5	27.5	20.2	20.7	24	6	7.1	42	PML10
PML12④	12	M24×2	33.2	54.7	32.6	18.5	21	21	31	23.4	23.4	27	6	9.5	59	PML12
PML5/32④	5/32	M12×1.5	20.2	32.8	19.7	10	10	10	16	14.9	14.9	14	5	2.9	11	PML5_32
PML1/4④	1/4	M14×1.5	23.8	37.8	22.8	13	12.3	12.5	19	17	17	17	5	4.4	17	PML1_4
PML5/16④	5/16	M16×1.5	25.7	41.8	25.7	13.5	14.2	14.5	22	18.1	18.1	19	6	5.9	25	PML5_16
PML3/8④	3/8	M20×2	28	47.8	29.5	16.5	17.5	17.5	27.5	20.2	20.7	24	6	6.9	42	PML3_8

Common caution in this page

※ 1. ④ in Model code / Replaced with "W" for Light-gray color, "-C" for Clean-room package, "W-C" for Light-gray color and Clean-room package, "-UC" for Clean-wash and Clean-room package

※ 2. Orifice bore is the smallest passage converted in terms of the diameter.