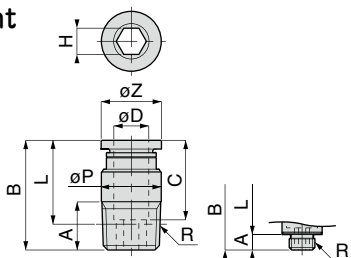


### POC Inner Hex. Straight

RoHS compliant



Metric thread type

Unit : mm

Model code	Tube O.D. øD	R	A	B	L	Tube end C	Hex. H	øP	øZ	Orifice bore (ømm)	Weight (g)	CAD file name
POC4-M5 ④	4	M5 × 0.8	2.8 [3]	19.7	16.9 [16.7]	14.9	2.5	9.7	9.9	2.6	4.6	POC4-M5_C
POC4-M6 ④		M6 × 1	3.8	20.7	16.9						5.4	POC4-M6_C
POC4-01 ④		R1/8	8	20	16						6.6	POC4-01_
POC6-M5 ④	6	M5 × 0.8	2.8 [3]	21.3	18.5 [18.3]	17	2.5	11.8	11.8	2.6	5.6	POC6-M5_C
POC6-M6 ④		M6 × 1	3.8	22.3	18.5		3			6.3	POC6-M6_C	
POC6-01 ④		R1/8	8	22.1	18.1		4			7.6	POC6-01_	
POC6-02 ④		R1/4	11	21.3	15.2					13.7	13	POC6-02_
POC8-01 ④	8	R1/8	8	25.9	21.9	18.2	5	13.7	13.8	5.3	8.8	POC8-01_
POC8-02 ④		R1/4	11	25.1	19.1		6			6.3	13	POC8-02_
POC8-03 ④		R3/8	12	22.2	15.9		16.8			19	POC8-03_	
POC10-01 ④	10	R1/8	8	30.3	26.3	20.7	5	17.5	16.8	5.3	17	POC10-01_
POC10-02 ④		R1/4	11	29.8	23.8		6			20	POC10-02_	
POC10-03 ④		R3/8	12	29.3	23					6.3	26	POC10-03_
POC10-04 ④		R1/2	15	30.3	22.1		20.8			45	POC10-04_	
POC12-02 ④	12	R1/4	11	35.9	29.9	23.3	6	20.8	19.8	6.3	29	POC12-02_
POC12-03 ④		R3/8	12	31.9	25.6		8			31	POC12-03_	
POC12-04 ④		R1/2	15	33.9	25.7					8.4	45	POC12-04_
POC16-03 ④	16	R3/8	12	39.3	33	24.8	10	26	23	10.5	61	POC16-03_
POC16-04 ④		R1/2	15	40.3	32.1		12			12.6	65	POC16-04_
POC1/4-M5 ④	1/4	M5 × 0.8	2.8 [3]	21.3	18.5 [18.3]	17	2.5	11.8	11.8	2.6	5.6	POC1_4-M5_C
POC1/4-01 ④		R1/8	8	22.1	18.1		4			7.5	POC1_4-01_	
POC1/4-02 ④		R1/4	11	21.3	15.2					13.7	12	POC1_4-02_
POC5/16-01 ④	5/16	R1/8	8	25.9	21.9	18.2	5	13.7	13.8	5.3	8.8	POC5_16-01_
POC5/16-02 ④		R1/4	11	25.1	19.1		6			13	POC5_16-02_	
POC5/16-03 ④		R3/8	12	22.2	15.9					16.8	19	POC5_16-03_
POC3/8-02 ④		R1/4	11	29.8	23.8		20.7			6	17.5	16.8
POC3/8-03 ④	R3/8	12	29.3	23	27	POC3_8-03_						
POC3/8-04 ④	R1/2	15	30.3	22.1	20.8	46		POC3_8-04_				

\* 1. ④ in Model code / Replaced with "W" for Light-gray color, "-C" for Clean-room package, "W-C" for Light-gray color and Clean-room package, "-UC" for Clean-wash and Clean-room package

\* 2. "L" is a reference value for height dimension after tightening taper thread.

\* 3. Dimensions in [ ] are for clean-room and clean-wash package products.

\* 4. Orifice bore is the smallest passage converted in terms of the diameter.