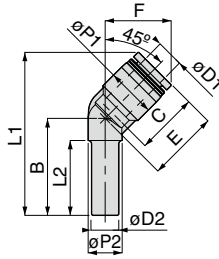


## PLHJ 45° Plug-in Elbow

RoHS compliant



OP P.754

3D CAD

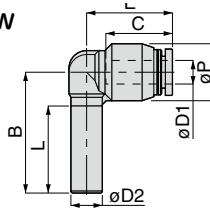
CAD

Unit : mm

Model code	Tube O.D. øD1	Tube dia. øD2	B	øP1	øP2	Tube end C	L1	L2	E	F	Orifice bore (ømm)	Weight (g)	CAD file name
PLHJ8④	8	8	28.5	14.5	10	18.1	47.9	21	20.7	19.4	6	5.8	PLHJ8
PLHJ10④	10	10	31.5	17.5	11	20.2	54.3	23	24	22.8	7.5	9.5	PLHJ10
PLHJ12④	12	12	35.5	21	14	23.4	63.1	25.5	29.4	27.6	9	15	PLHJ12
PLHJ16④	16	16	41	25	17.6	24.1	70	30.2	29.8	29	13	18	PLHJ16

## PLGJ Unequal Plug-in Elbow

RoHS compliant



OP P.754

3D CAD

CAD

Unit : mm

Model code	Tube O.D. øD1	Tube dia. øD2	B	L	øP	Tube end C	E	Orifice bore (ømm)	Weight (g)	CAD file name
PLGJ6-4④	4	6	28.5	21	12.5	14.9	17.7	3.2	3.6	PLGJ6-4
PLGJ8-4④	4	8	30.7	22	14.5	14.9	21.3	3.7	5	PLGJ8-4
PLGJ8-6④	6					17	21.9	4.7	5.2	PLGJ8-6
PLGJ10-6④	6	10	33.7	23.5	17.5	17	24.7	5.1	7.5	PLGJ10-6
PLGJ10-8④	8					18.1	24.6	6.5	8	PLGJ10-8
PLGJ12-8④	8	12	39	26.5	21	18.1	28.4	7	13	PLGJ12-8
PLGJ12-10④	10					20.2	28.7	8	14	PLGJ12-10
PLGJ16-12④	12	16	45	31	25	23.4	38.2	10.7	26	PLGJ16-12
PLGJ1/4-5/32④	5/32	1/4	28.5	21	12.5	14.9	17.7	3.2	3.7	PLGJ1_4-5_32
PLGJ1/4-3/16④	3/16					17.4	20.2	3.3	4.2	PLGJ1_4-3_16
PLGJ1/4-6④	6	5/16	30.7	22	14.5	17	19.8	4	4	PLGJ1_4-6
PLGJ5/16-3/16④	3/16					17.4	22.3	4.7	5.3	PLGJ5_16-3_16
PLGJ5/16-1/4④	1/4	17	21.9	5.1	5.1	PLGJ5_16-1_4				
PLGJ3/8-1/4④	1/4	3/8	33.7	23.5	17.5	17	24.7	5.1	7.3	PLGJ3_8-1_4
PLGJ3/8-5/16④	5/16					18.1	24.6	6.5	7.8	PLGJ3_8-5_16
PLGJ1/2-5/16④	5/16	1/2	39	26.5	21	18.1	28.4	7	13	PLGJ1_2-5_16
PLGJ1/2-3/8④	3/8					20.2	28.7	8	15	PLGJ1_2-3_8
PLGJ1/2-12④	12					23.4	28.9	9		PLGJ1_2-12

Common caution in this page

※ 1. ④ in Model code / Replaced with "W" for Light-gray color, "-C" for Clean-room package, "-WC" for Light-gray color and Clean-room package, "-UC" for Clean-wash and Clean-room package

※ 2. Orifice bore is the smallest passage converted in terms of the diameter.

OP P.660

Page for special specifications

3D CAD

3D CAD data is available at PISCO website.

CAD

CAD data is available at PISCO website.