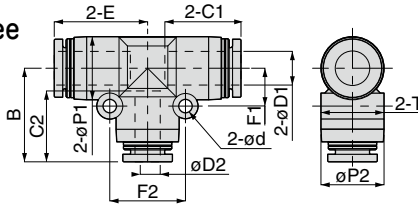


PEG Unequal Union Tee

RoHS compliant



Unit : mm

Model code	Tube O.D. øD1	Tube O.D. øD2	øP1	øP2	Tube end C1	Tube end C2	E	ød	F1	F2	B	T	Orifice bore (ømm)	Weight (g)	CAD file name
PEG4-6④	4	6	13	13	14.9	17	19.5	3.2	8	16	20.1	13.5	2.8	11	PEG4-6
PEG6-4④	6	4	13	13	17	14.9	20.05	3.2	8	16	19.5	13.5	2.8	11	PEG6-4
PEG6-8④		8	15	15		18.1	22.25								9
PEG8-4④	8	4	14.5	12.5	18.1	14.9	22.2	3.2	9	18	21.7	15.1	2.8	14	PEG8-4
PEG8-6④		6				17							22.3		4.3
PEG8-10④		10	17.5	17.5		20.2	24.9						4.2		12
PEG10-6④	10	6	17.5	14.5	20.2	17	25.2	4.2	12	24	25	18.2	4.3	23	PEG10-6
PEG10-8④		8				18.1							24.9		6.2
PEG10-12④		12	21	21		22.9	28.2						4.2		14
PEG12-8④	12	8	21	17.5	23.4	18.1	28.4	4.2	14	28	27.7	21.7	6.2	32	PEG12-8
PEG12-10④		10				20.2					28		8.1	34	PEG12-10
PEG12-16④	16	16	25	25	24.1	33.2	4.2	12	24	33.1	25.6	9.9	46	PEG12-16	
PEG16-10④		10	20.7	22.9	33.1	33.1								4.2	12
PEG16-12④	12	25	25	24.1	22.9	33.1	4.2	12	24	33.2	25.6	10	45	PEG16-12	
PEG5/32-3/16④	5/32	3/16	13	13	14.9	17.4	19.5	3.2	8	16	20.5	13.5	2.8	11	PEG5_32-3_16
PEG5/32-1/4④		1/4				17								20.1	10
PEG3/16-5/32④	3/16	5/32	13	13	17.4	14.9	20.45	3.2	8	16	19.5	13.5	2.8	11	PEG3_16-5_32
PEG3/16-1/4④		1/4				17								20.1	3.8
PEG1/4-5/32④	1/4	5/32	13	13	17	14.9	20.05	3.2	8	16	20.5	13.5	3.8	11	PEG1_4-5_32
PEG1/4-3/16④		3/16				17.4									20.5
PEG1/4-5/16④		5/16	15	15		18.1	22.25						4.2		9
PEG5/16-5/32④	5/16	5/32	14.5	12.5	18.1	14.9	22.2	3.2	9	18	21.7	15.1	2.8	16	PEG5_16-5_32
PEG5/16-3/16④		3/16				17.4									22.7
PEG5/16-1/4④		1/4	17	22.3		16-1.4	PEG5_16-1_4								
PEG5/16-3/8④	5/16	3/8	17.5	17.5	20.2	24.9	4.2	12	24	25.2	18.2	6.2	22	PEG5_16-3_8	
PEG3/8-1/4④		1/4	17	25	18.2	5	23	PEG3_8-1_4							
PEG3/8-5/16④	3/8	5/16	17.5	14.5	20.2	18.1	25.2	4.2	12	24	24.9	18.2	6.2	23	PEG3_8-5_16
PEG3/8-1/2④		1/2	21	21	23.2	28.2	4.2	14	28	28.5	21.7	7.5	34	PEG3_8-1_2	
PEG1/2-5/16④	1/2	5/16	21	17.5	23.7	18.1	28.7	4.2	14	28	27.7	21.7	6.2	30	PEG1_2-5_16
PEG1/2-3/8④		3/8				20.2					28		7.5	32	PEG1_2-3_8

※ 1. ④ in Model code / Replaced with "W" for Light-gray color, "-C" for Clean-room package, "-WC" for Light-gray color and Clean-room package, "-UC" for Clean-wash and Clean-room package

※ 2. Orifice bore is the smallest passage converted in terms of the diameter.

FITTING CONTROLLER VALVE TUBE MAKE-TO-ORDER PRODUCTS 74 Standard Series Mini Series Stainless Series Chemical Series PP Series EG Series Anti-siphon & Backflow Control The Compressed Air Control Minimal Series Stop Fitting Series Rotary Series Twist-Proof Fitting Block and Connector Coupling Color Cap



Page for special specifications



3D CAD data is available at PISCO website.



CAD data is available at PISCO website.