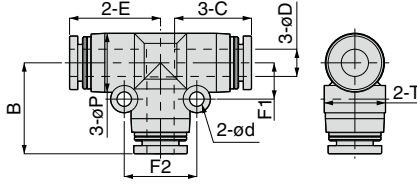


Tube Fitting

FITTING

PE Union Tee

RoHS compliant



Unit : mm

Model code	Tube O.D. øD	øP	Tube end C	E	ød	T	F1	F2	B	Orifice bore (ømm)	Weight (g)	CAD file name
PE4 ⁽⁴⁾	4	10	14.9	17.2	3.2	10.4	6.5	13	17.2	2.8	7.5	PE4
PE6 ⁽⁴⁾	6	13	17	20.05	3.2	13.5	8	16	20.1	4.8	11	PE6
PE8 ⁽⁴⁾	8	15	18.1	22.2	3.2	15.6	9	18	22.2	6.2	16	PE8
PE10 ⁽⁴⁾	10	17.5	20.2	25.2	4.2	18.2	12	24	25.2	8.1	25	PE10
PE12 ⁽⁴⁾	12	21	22.9	28.4	4.2	21.7	14	28	28.2	10	36	PE12
PE16 ⁽⁴⁾	16	25	24.1	33.1	4.2	25.6	12	24	33.1	13	44	PE16
PE5/32 ⁽⁴⁾	5/32	10	14.9	17.2	3.2	10.4	6.5	13	17.2	2.8	7.5	PE5_32
PE3/16 ⁽⁴⁾	3/16	13	17.4	20.45	3.2	13.5	8	16	20.5	3.8	12	PE3_16
PE1/4 ⁽⁴⁾	1/4	13	17	20.05	3.2	13.5	8	16	20.1	4.8	11	PE1_4
PE5/16 ⁽⁴⁾	5/16	15	18.1	22.2	3.2	15.6	9	18	22.2	6.2	16	PE5_16
PE3/8 ⁽⁴⁾	3/8	17.5	20.2	25.2	4.2	18.2	12	24	25.2	8.1	25	PE3_8
PE1/2 ⁽⁴⁾	1/2	21	23.2	28.7	4.2	21.7	14	28	28.5	10.7	34	PE1_2

※ 1. ④ in Model code / Replaced with "W" for Light-gray color, "-C" for Clean-room package, "W-C" for Light-gray color and Clean-room package, "-UC" for Clean-wash and Clean-room package

※ 2. Orifice bore is the smallest passage converted in terms of the diameter.