

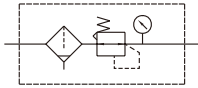
# MAFR300L series

AIR UNIT (F.R.UNIT)



- Longer case for adapting high efficient auto drain valve.

## Symbol



## Specification

Model	MAFR300L	
Bore No.	8A	10A
Port size	1/4	3/8
Medium	Air	
Operating pressure range (*)	0.05~1 MPa	
Proof pressure	1.5 MPa	
Regulated pressure range	0.05~0.85 MPa	
Ambient temperature	- 5~+60°C (No freezing)	
Filter element	Standard: 5µm, Option: 40 µm	
Drain capacity	40 cm <sup>3</sup>	
Attachment	Pressure gauge (PG-40), L-type bracket	
Weight	452 g	

\* Standard unit contains semi-auto-drain function when operating pressure below 0.05 MPa.

\* Choose auto-drain FMRF300, the pressure range is 0.15~1 MPa.

## Order example

MAFR300L - 8A - □ - □ - □ - □

MODEL

PORT SIZE  
8A: 1/4  
10A: 3/8

Blank: PC bowl + Semi-auto drain  
D: Auto drain valve (FMRF300)  
N: Nylon bowl

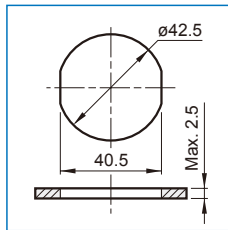
FILTER ELEMENT  
Blank: 5µm  
40u: 40µm

PORT THREAD  
Blank: Rc thread  
G: G thread  
NPT: NPT thread

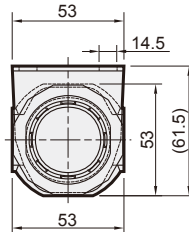
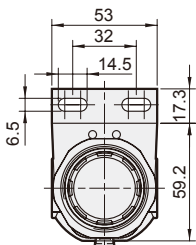
BRACKET

Blank: L type  
B3: Z type

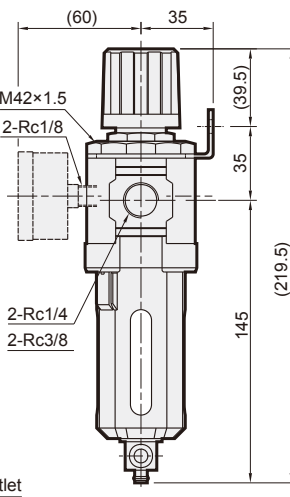
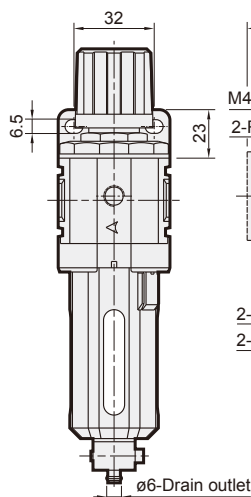
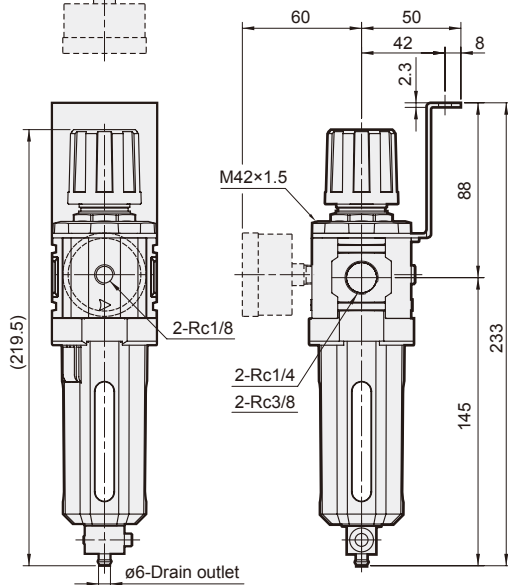
### Panel mounting hole



### Z type bracket

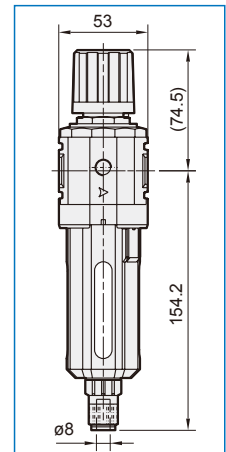


### L type bracket



### MAFR300L-D

Auto drain valve



## Flow feature

