

MACP300 series

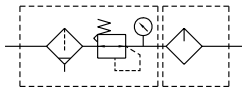
AIR UNIT (F.R.L.UNIT)



Specification



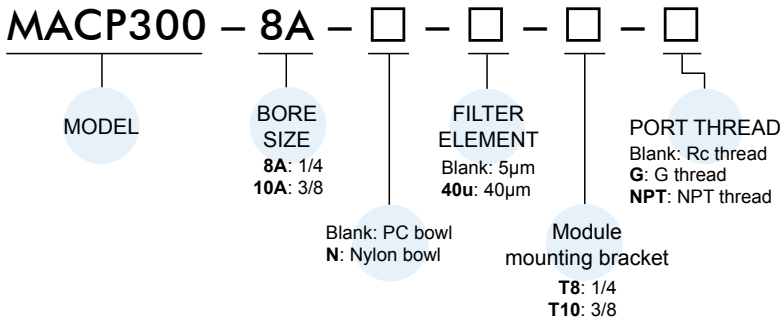
Symbol



Model	MACP300	
Components	MAFR300, MAL300	
Bore No.	8A	10A
Port size	1/4	3/8
Medium	Air	
Operating pressure range (*)	0.05~1 MPa	
Proof pressure	1.5 MPa	
Regulated pressure range	0.05~0.85 MPa	
Ambient temperature	- 5~+60°C (No freezing)	
Filter element	Standard: 5µm Option: 40µm	
Lubricating oil capacity	55c.c	
Min. flow for oil drip	50 ℓ/min	60 ℓ/min
Recommended lubricating oil	Turbine oil ISO-VG32	
Attachment	Pressure gauge(PG-40), T-type bracket	
Weight	724 g	

* Standard unit contains semi-auto-drain function when operating pressure below 0.05 MPa.

Order example



Flow feature

