

### Applications

- One touch type pipe connection tool for air pressure piping.
- Various uses depending on the user's environment.

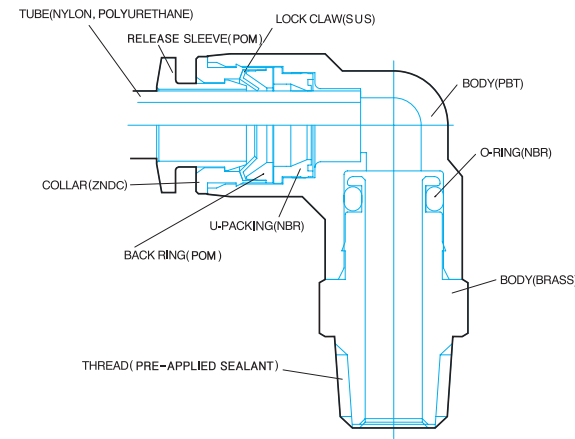
### Features

- One action inserts the tube to release and connect easily.
- The PC type has interior and exterior hexagonal shapes for efficient piping in limited spaces.
- The main body of the PL and PT types is a rotating structure for efficient piping.
- The screw section has O-ring, or Teflon coated.

### Specifications

- Fluid type : Air (No other gases or liquids)
- Working pressure : 0~150PSI / 0~9.9Kgf/cm<sup>2</sup> (0~990kPa)
- Negative pressure : -29.5 in Hg / -750mmHg (-750Torr)
- Working temperature : 32~140° F / 0~60° C
- Applicable Tube : Polyurethane and Nylon

### Structural Diagram



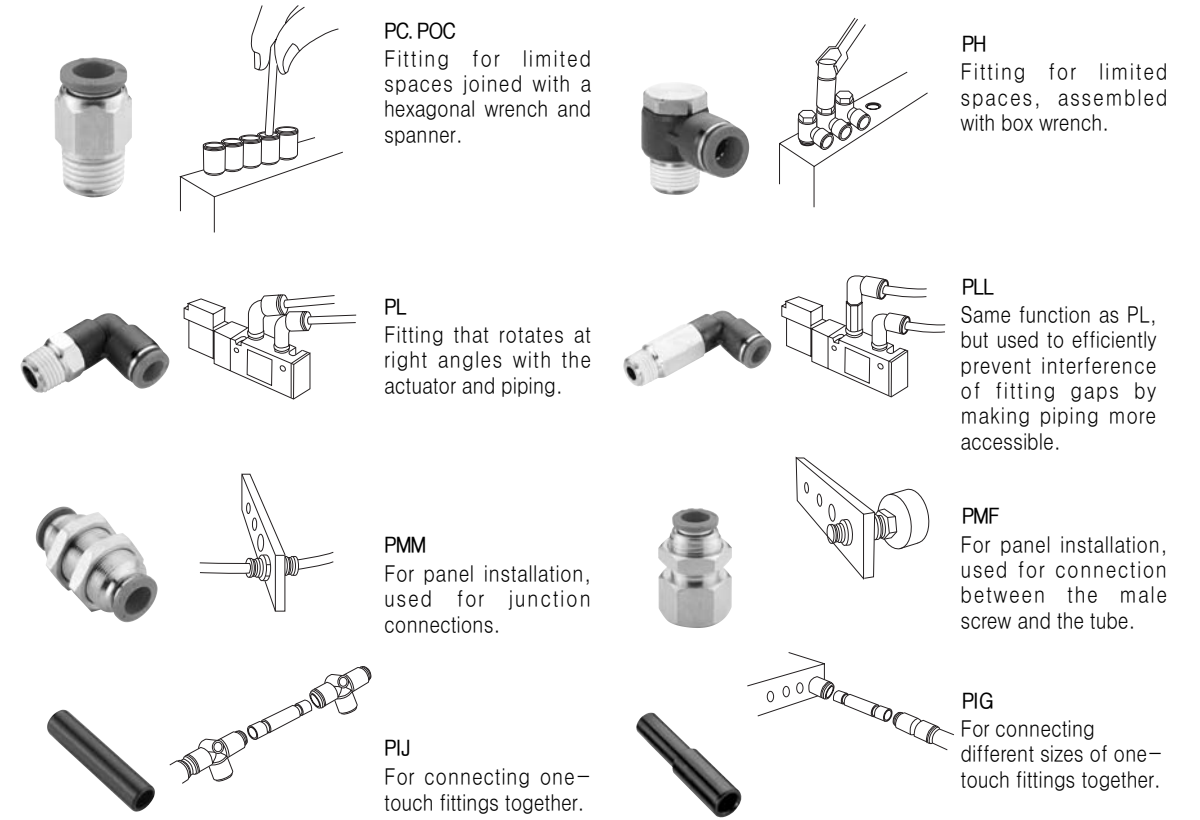
### Conversion

kgf/cm <sup>2</sup>	bar	Pa(N/m <sup>2</sup> )	atm	mHg	lbf/in <sup>2</sup>
1	0.980665	0.980665E5	0.9678	0.7356	14.22
1.0197	1	1E-5	0.9869	0.7501	14.50
1.0197E-5	1E-5	1	0.9869E-5	7.501E-6	1.450E-4
1.0332	1.0325	1.0325E5	1	0.760	14.70
1.3595	1.3332	1.3332E5	1.3158	1	19.34
0.07031	0.06895	6.895E3	0.06805	0.05171	1

### Applied example

- The interior and exterior hexagonal part can be assembled using a spanner and hexagonal wrench in screw joining.
- The injection body of the PL and PT models rotates to allow direction changes according to piping direction.
- The sleeve is circular so that it is free of equipment setting.

### Form



### Product Code System

#### METRIC - BSPT(R)

#### PC 06-01-N

OneTouch Fitting	Tube Dia	Thread Size	Plating	Sleeve Color
CODE	SIZE	METRIC THREAD	Nickel	
04	Ø4	CODE SIZE		Blue
06	Ø6	M5 M5×0.8		
08	Ø8	M6 M6×1.0		
10	Ø10	R(P,T) THREAD		
12	Ø12	CODE SIZE		
16	Ø16	01 R1/8		
		02 R1/4		
		03 R3/8		
		04 R1/2		

#### METRIC - BSPP(G)

#### PC 06-G01

OneTouch Fitting	Tube Dia	Thread Size	Sleeve Color
CODE	SIZE	METRIC THREAD	Blue
04	Ø4	CODE SIZE	
06	Ø6	M5 M5×0.8	
08	Ø8	M6 M6×1.0	
10	Ø10	G(P,F) THREAD	
12	Ø12	CODE SIZE	
16	Ø16	G01 G1/8	
		G02 G1/4	
		G03 G3/8	
		G04 G1/2	

#### INCH - BSPT(R)

#### PC-1/4-01

OneTouch Fitting	Tube Dia	Thread Size
CODE	SIZE	R(P,T) THREAD
5/32	Ø5/32	CODE SIZE
3/16	Ø3/16	01 R1/8
1/4	Ø1/4	02 R1/4
5/16	Ø5/16	03 R3/8
3/8	Ø3/8	04 R1/2
1/2	Ø1/2	

#### INCH - NPT

#### PC-1/4-N1

OneTouch Fitting	Tube Dia	Thread Size
CODE	SIZE	UNF THREAD
5/32	Ø5/32	CODE SIZE
3/16	Ø3/16	U 10-32UNF
1/4	Ø1/4	NPT THREAD
5/16	Ø5/16	CODE SIZE
3/8	Ø3/8	N1 NPT1/8
1/2	Ø1/2	N2 NPT1/4
		N3 NPT3/8
		N4 NPT1/2

### CAUTION

- Be sure to refer to the Safety Caution, Classification of Warning Indications (P7), and Common Caution of Fitting Products (P8) before use.
- Assemble the fitting according to the proper connection torque value (P7).
- Proper torque refers to connection by hand and 2~3 rotations using a tool. Excessive pressure may damage the screw.
- To insert the tube into the fitting, cut the tube at a right angle, insert it fully to the end, and pull the tube gently to make sure it isn't released.
- Avoid piping under tension, and also avoid high curvature piping at the tube insertion section of the fitting.

### WARNING

- Be sure to prevent pressure buildup due to twisting, pulling, and bending of the fitting product. This may cause product damage or air leakage.
- When the applied fluid is water, do not use the product if it does not meet all specifications. Fitting damage, tube release, and compressed air leakage may occur.

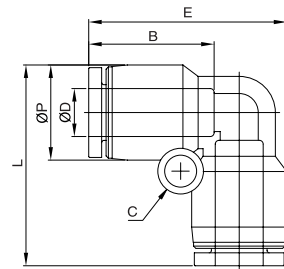
# Kniekoppeling

# PUL



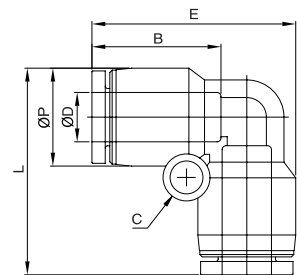
## METRIC

MODEL	ØD	ØP	L	E	C	B	OFFICE	WEIGHT(g)	BOX(EA.)
PUL 04	4	10.5	24.2	24.2	3.3	16.3	3.0	4.6	100
PUL 06	6	12.5	27.5	27.5	3.3	17.6	5.0	5.4	100
PUL 08	8	14.8	30.7	30.7	4.3	18.7	7.0	8.4	50
PUL 10	10	17.5	34.1	34.1	4.3	19.6	8.0	11.4	50
PUL 12	12	20.5	39.9	39.9	4.3	21.9	10.0	19.2	25
PUL 16	16	25.5	46.7	46.7	4.3	24.0	13.0	38.0	20



## INCH

MODEL	ØD	ØP	L	E	C	B	OFFICE	WEIGHT(g)	BOX(EA.)
PUL5/32	5/32	10.5	24.2	24.2	3.3	16.3	3.0	4.6	100
PUL3/16	3/16	11.5	25.5	25.5	3.5	16.8	3.5	4.4	100
PUL1/4	1/4	13.0	27.8	27.8	3.5	17.4	4.8	7.4	100
PUL5/16	5/16	14.5	30.7	30.7	4.3	18.7	7.0	9.4	50
PUL3/8	3/8	17.5	34.6	34.6	4.5	20.2	8.0	14.4	25
PUL1/2	1/2	21.0	40.8	40.8	4.5	22.0	9.0	22.0	20



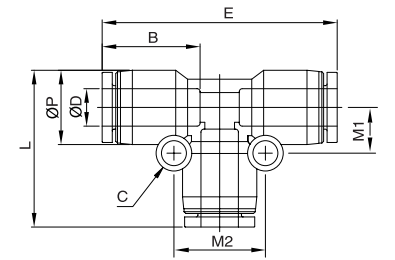
# Tee koppeling

# PUT



## METRIC

MODEL	ØD	ØP	L	E	C	B	M1	M2	OFFICE	WEIGHT(g)	BOX(EA.)
PUT 04	4	10.5	24.2	36.6	3.3	16.3	6.4	12.8	2.6	9.4	100
PUT 06	6	12.5	27.5	41.8	3.3	17.6	7.7	15.4	5.0	10.1	50
PUT 08	8	14.8	30.7	44.9	4.3	18.7	8.9	17.8	6.5	12.1	50
PUT 10	10	17.5	34.1	48.2	4.3	19.6	10.9	21.8	8.0	15.6	25
PUT 12	12	20.5	39.9	56.8	4.3	21.9	12.4	24.8	10.0	26.3	25
PUT 16	16	25.5	47.2	68.2	4.3	24.0	15.9	31.8	13.0	52.0	15



## INCH

MODEL	ØD	ØP	L	E	C	B	M1	M2	OFFICE	WEIGHT(g)	BOX(EA.)
PUT5/32	5/32	10.5	24.2	36.6	3.3	16.3	6.4	12.8	3.0	6.4	100
PUT3/16	3/16	11.5	25.5	39.5	3.5	16.8	7.5	15.0	3.5	6.1	100
PUT1/4	1/4	13.0	27.8	42.6	3.5	17.4	8.3	16.5	4.8	10.1	50
PUT5/16	5/16	14.5	30.7	44.9	4.3	18.7	8.9	17.8	6.5	13.1	50
PUT3/8	3/8	17.5	34.6	45	4.5	20.2	11.0	22.0	8.0	19.6	25
PUT1/2	1/2	21.0	40.5	40.8	4.5	22.0	12.8	25.5	9.0	31.0	25

