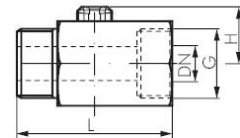
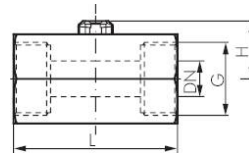
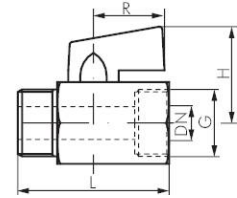
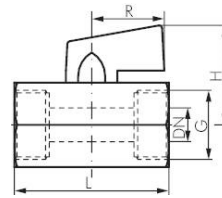


BL2BN-MM series

2-way Mini Brass Ball Valve



Reference	L (mm)	Reference	L (mm)	G	DN (mm)	H (mm)	R (mm)	Weight (g)
BL2BNMM-018	40	BL2BN-MM-MF-018	39	G 1/8"	6	27.5	22	105
BL2BNMM-014	40	BL2BN-MM-MF-014	39	G 1/4"	8	27.5	22	95
BL2BNMM-038	40	BL2BN-MM-MF-038	40	G 3/8"	8	27.5	22	85
BL2BNMM-012	46	BL2BN-MM-MF-012	45	G 1/2"	10	29.5	22	130
BL2BNMM-034	54	BL2BN-MM-MF-034	51	G 3/4"	12	32	22	195
BL2BN-SCM-018	40	BL2BN-SCM-MF-018	39	G 1/8"	6	23	22	80
BL2BN-SCM-014	39	BL2BN-SCM-MF-014	39	G 1/4"	8	23	22	80
BL2BN-SCM-038	42	BL2BN-SCM-MF-038	40	G 3/8"	8	23	22	80
BL2BN-SCM-012	47	BL2BN-SCM-MF-012	45	G 1/2"	10	27.5	22	105

ENGLISH

Materials:

Housing: chrome-plated brass, ball: hard chromium plated brass, seal: PTFE / NBR

Temperature range:

0°C to +90°C (+32°F to +194°F)

Operating range:

Water (no steam), neutral, gaseous and non-aggressive, liquid media, mineral oils, compressed air, vacuum (max. -0.9 bar or -13.05 psi)

NEDERLANDS

Materialen:

Behuizing: Verchroomd messing, kogel: Hardverchroomd messing, afdichting: PTFE / NBR

Temperatuurbereik:

0°C tot +90°C

Toepassingsbereik:

Water (geen stoom), neutrale, gasvormige en niet-agressieve, vloeibare media, mineraalolie, perslucht, vacuüm (max. -0,9 bar)

DEUTSCH

Werkstoffe:

Gehäuse: Messing verchromt, Kugel: Messing hartverchromt, Dichtung: PTFE / NBR

Temperaturbereich:

0°C bis +90°C

Einsatzbereich:

Wasser (kein Dampf), neutrale, gasförmige und nicht aggressive, flüssige Medien, Mineralöle, Druckluft, Vakuum (max. -0,9 bar)

FRANÇAIS

Matériaux:

Boîtier : laiton chromé, boisseau sphérique : laiton chromé dur, joint : PTFE / NBR

Plage de température:

0°C à +90°C

Domaine d'utilisation:

Eau (sans vapeur), fluides neutres, gazeux et non agressifs, huiles minérales, air comprimé, vide (-0,9 bar max.)