

Series MI-01, MI-02, MI-03

ISO 5599/1, Size 1 to 3

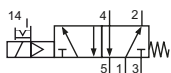
Technical details

Connection	ISO 5599/1
Nominal size	Size 1: 9 mm Size 2: 13 mm Size 3: 14 mm
Temperature range	-10°C ... +70°C
Medium	Filtered, oil-free and dried compressed air according to ISO 8573-1:2010, Class 7:2:4, instrument air, free of aggressive additives. Alternatively the pressure dew point must be at least 10°C below lowest occurring ambient temperature.
Materials	Body: Al (anodized), seals: NBR and POM, inner parts: Al, stainless steel and brass
Protection	IP 65 according to EN 60529
	Valves in accordance with 2014/34/EU (ATEX) available. (Chapter 13)

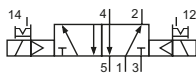


Electrically operated spool valve. The manual override is detent and is operated by screwdriver.

5/2-way valves

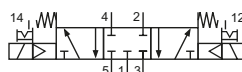


MI-01-511-HN-xxx
MI-02-511-HN-xxx
MI-03-511-HN-xxx
5/2-way, single solenoid, mechanical spring return

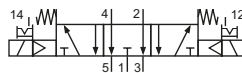


MI-01-520-HN-xxx
MI-02-520-HN-xxx
MI-03-520-HN-xxx
5/2-way, double solenoid

5/3-way valves



MI-01-530-HN-xxx
MI-02-530-HN-xxx
MI-03-530-HN-xxx
5/3-way, center position closed



MI-01-533-HN-xxx
MI-02-533-HN-xxx
MI-03-533-HN-xxx
5/3-way, center position exhausted

Please complete: xxx = electrical option

Electrical options

Nominal voltage	Power consumption	Specifics	Plug connection* ¹	-xxx
12 V DC	4.2 W		Form B industrial norm	-411
12 V DC	2.2 W	max. 8 bar	Form B industrial norm	-431
24 V DC	4.2 W		Form B industrial norm	-412
24 V DC	4.8 W		M 12	-O12
24 V DC	2.2 W	max. 8 bar	Form B industrial norm	-432
24 V DC	2.5 W	max. 8 bar	M 12	-O32
24 V AC	7/4 VA		Form B industrial norm	-422
115 V AC	7/4 VA		Form B industrial norm	-426
230 V AC	7/4 VA		Form B industrial norm	-427

*¹ Plug socket not included, suitable plug sockets see page 4-38.

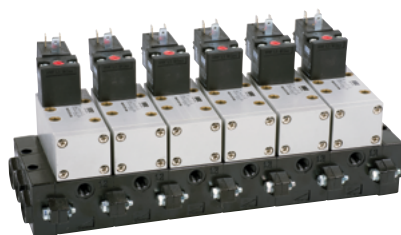
Technical data

Model-no.:	MI-01-511	MI-01-520	MI-01-530	MI-01-533
Operating pressure* (bar)	2.5...10	2...10	3...10	3...10
Pilot pressure* (bar)	2.5...10	2...10	3...10	3...10
Flow rate (NI/min)	1700	1700	1610	1610
Response time (ms) at 6 bar	on: 15 off: 27	on: 13 off: 13	on: 17 off: 19	on: 17 off: 19
Weight (kg)	0.480	0.645	0.620	0.620
Model-no.:	MI-02-511	MI-02-520	MI-02-530	MI-02-533
Operating pressure* (bar)	2...10	2...10	3...10	3...10
Pilot pressure* (bar)	2...10	2...10	3...10	3...10
Flow rate (NI/min)	2020	2020	2020	2020
Response time (ms) at 6 bar	on: 29 off: 57	on: 17 off: 17	on: 20 off: 27	on: 20 off: 27
Weight (kg)	0.708	0.850	0.847	0.847
Model-no.:	MI-03-511	MI-03-520	MI-03-530	MI-03-533
Operating pressure* (bar)	2...10	2...10	3...10	3...10
Pilot pressure* (bar)	2...10	2...10	3...10	3...10
Flow rate (NI/min)	4150	4150	4150	4150
Response time (ms) at 6 bar	on: 32 off: 57	on: 20 off: 20	on: 22 off: 55	on: 22 off: 55
Weight (kg)	1.115	1.287	1.277	1.277

* max. 8 bar at 2.2 W and 2.5 W

Accessories


Plug sockets: page 4-38

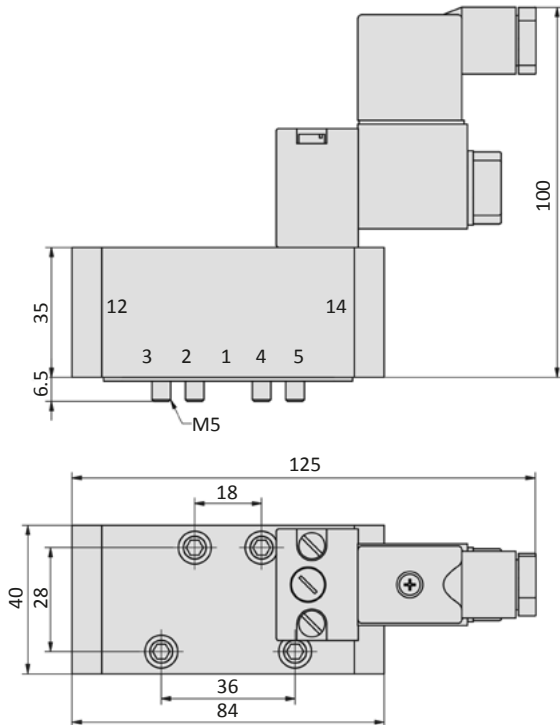

 Manifolds and Accessories: www.airtec.de

Series MI-01, MI-02, MI-03

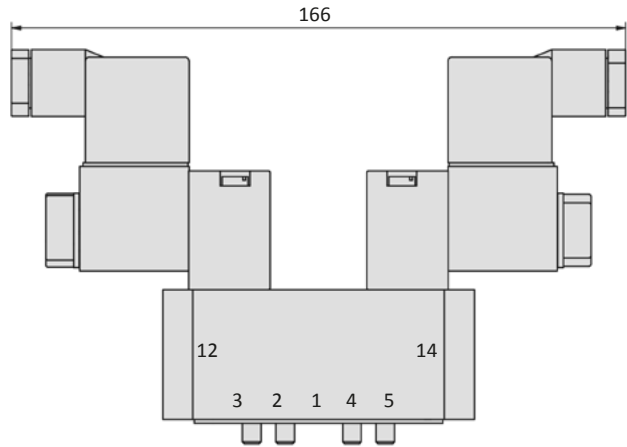
ISO 5599/1, Size 1 to 3

Dimensions

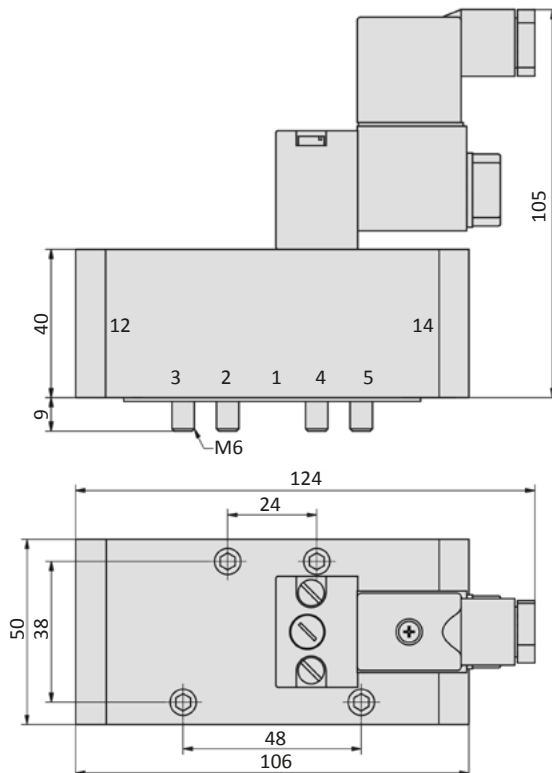
MI-01-511-HN



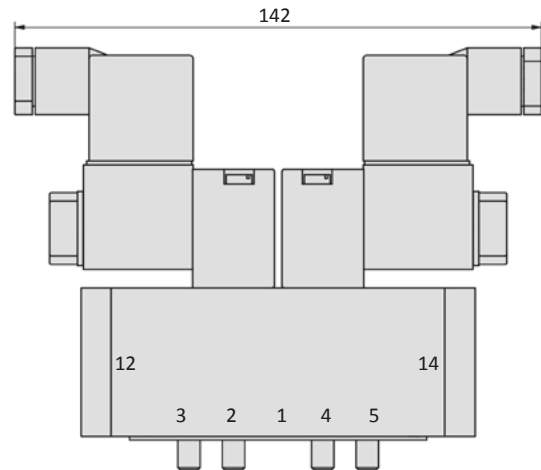
MI-01-520-HN, MI-01-53x-HN



MI-02-511-HN

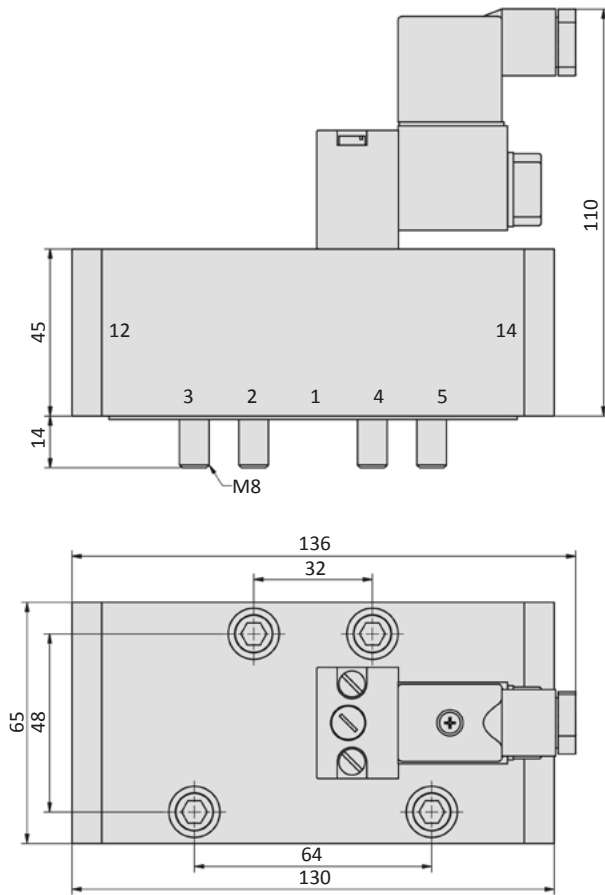


MI-02-520-HN, MI-02-53x-HN

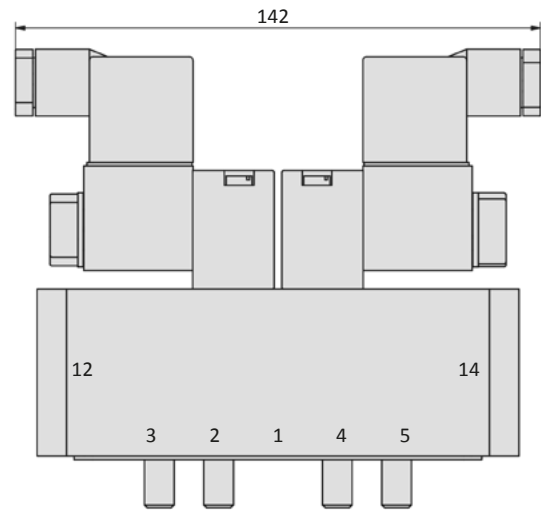


Dimensions

MI-03-511-HN



MI-03-520-HN, MI-03-53x-HN



- 1 = pressure inlet
- 2,4 = outlets
- 3,5 = exhausts

Plug socket (not included in scope of delivery) can be repositioned by 180°.
Solenoid coil can be repositioned by 2 x 90°.