



Solenoids with Kick and Drop

- Two windings encapsulated in one coil with epoxy
- Inrush power increases performance and differential pressure range for small installation volumes
- Holding power reduces to less than 1 W with over 80% energy saved
- Less heating reduces calcification and increases service life
- Internal electronics assembly covers direct and alternating voltage with frequencies 50 Hz and 60 Hz

Product variants described in the data sheet may differ from the product presentation and description.

Can be combined with

	Type 6013 Plunger valve 2/2-way direct-acting	▶
	Type 6014 Plunger valve 3/2-way direct-acting	▶
	Type 6027 Direct-acting 2/2-way plunger valve	▶
	Type 6213 Servo-assisted 2/2-way diaphragm valve	▶
	Type 6281 Servo-assisted 2/2-way diaphragm valve	▶
	Type 5404 Servo-assisted 2/2-way piston valve	▶
	Type 6240 Servo-assisted 2/2-way piston valve	▶

Type description

The Kick and Drop variants of the AC10 and AC19 coil types use two windings in one solenoid. Thanks to an increased inrush power for the first winding, the switchable pressure range is increased as installation volumes stay the same. The second winding is switched in series after 500 ms. Thanks to this reduced holding power, energy is saved and coil heating is reduced.

Table of contents

1. General technical data	3
2. Materials	4
2.1. Chemical Resistance Chart – Bürkert resistApp.....	4
2.2. Material specifications	4
3. Dimensions	5
3.1. Standard version AC10.....	5
3.2. Standard version AC19.....	5
4. Ordering information	6
4.1. Bürkert eShop – Easy ordering and quick delivery.....	6
4.2. Bürkert product filter	6
4.3. Ordering chart for Kick and Drop coil sets	6
4.4. Ordering chart for Type 6013 with Kick and Drop coil.....	7
4.5. Ordering chart for Type 6014 with Kick and Drop coil.....	8
4.6. Ordering chart for Type 6026 with Kick and Drop coil.....	9
4.7. Ordering chart for Type 6027 with Kick and Drop coil.....	10
4.8. Ordering chart for Type 6213 with Kick and Drop coil.....	11
4.9. Ordering chart for Type 6281 with Kick and Drop coil.....	12
4.10. Ordering chart for Type 5404 with Kick and Drop coil.....	13
4.11. Ordering chart for Type 6240 with Kick and Drop coil.....	14
4.12. Ordering chart for Type 6407 with Kick and Drop coil.....	15
4.13. Ordering chart for accessories	16
Cable plug Type 2518, form A according to DIN EN 175301 - 803.....	16

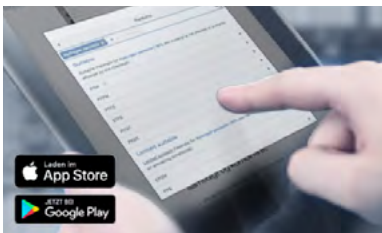
1. General technical data

Product properties	
Dimensions	Detailed information can be found in chapter "3. Dimensions" on page 5.
Material ^{1.)}	
Seal	FKM
Coil	Epoxy
Thermal insulation class of solenoid	Epoxy class H
Performance data	
Switching frequency	
AC10	Max. 10 cycles/min
AC19	Max. 30 cycles/min
Electrical data	
Operating voltage	24 V/50...60 Hz and 24 V/DC, 110...120 V/50...60 Hz, 230...240 V/50...60 Hz
Single valve duty cycle	Continuous operation 100% duty cycle
Voltage tolerance	± 10%
Approvals and certificates	
Degree of protection	IP65 with cable plug, IP67 with cable plug Type 2518
UL	cURus
Process/Port connection & communication	
Electrical connection	According to DIN EN 175 301 -803, form A for cable plug Type 2518 and Type 2509 (see "4.13. Ordering chart for accessories" on page 16) Cable or terminal box at AC19
Environment and installation	
Ambient temperature (max.)	55 °C (higher temperatures possible on request)

1.) The following materials are not in contact with the medium due to the push-over coil system.

2. Materials

2.1. Chemical Resistance Chart – Bürkert resistApp

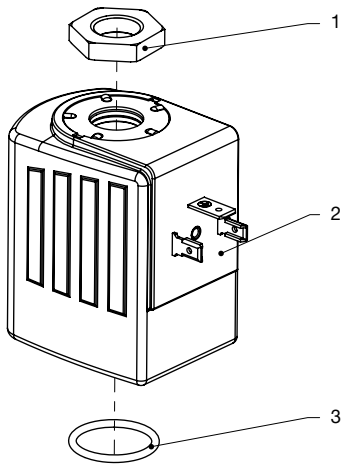


Bürkert resistApp – Chemical Resistance Chart

You want to ensure the reliability and durability of the materials in your individual application case? Verify your combination of media and materials on our website or in our resistApp.

[Start Chemical Resistance Check](#)

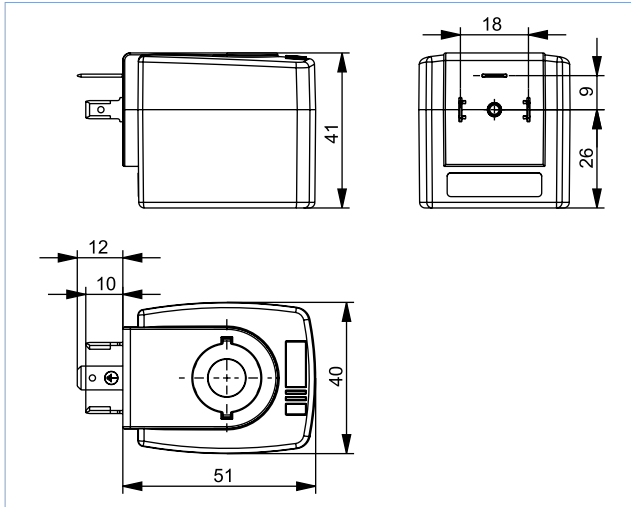
2.2. Material specifications



No.	Element	Material
1	Nut	DIN 176 thick film passivated or stainless steel
2	Coil	Epoxy
3	Seal	FKM

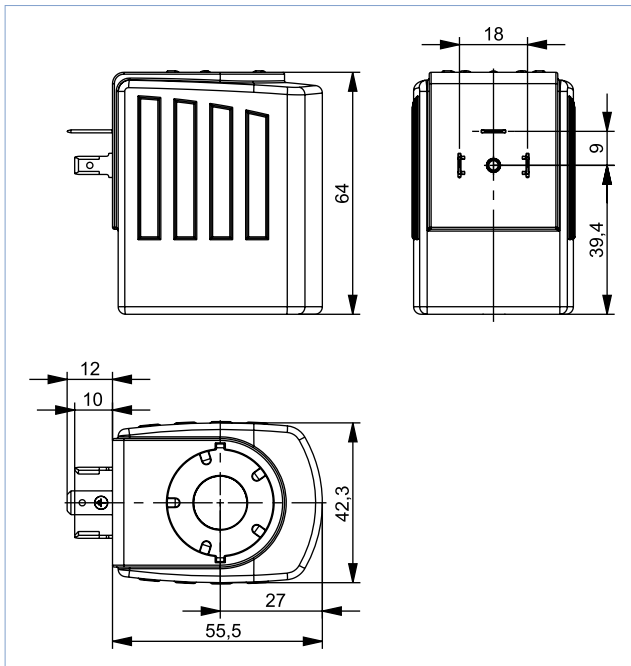
3. Dimensions

3.1. Standard version AC10



Coil size	H	J	K
6 (AC10)	65	37.5	72


3.2. Standard version AC19



Coil size	H	J	K
K (AC19)	42	27	55.5

4. Ordering information

4.1. Bürkert eShop – Easy ordering and quick delivery




Bürkert eShop – Easy ordering and quick delivery

You want to find your desired Bürkert product or spare part quickly and order directly? Our online shop is available for you 24/7. Sign up and enjoy all the benefits.

[Order online now](#)

4.2. Bürkert product filter



Bürkert product filter – Get quickly to the right product

You want to select products comfortably based on your technical requirements? Use the Bürkert product filter and find suitable articles for your application quickly and easily.

[Try out our product filter](#)

4.3. Ordering chart for Kick and Drop coil sets

Note:

- As replacement demand or for retrofitting
- Set contains Kick and Drop solenoid, seal and fixing nut
- Further variants with alternative voltages possible on request

Coil type	Recommended solenoid valves ¹⁾	Electrical connection	Coil power		Article no.	
			Inrush power [W]	Holding power [W]	24 / AC/DC [V/Hz]	230/AC [V/Hz]
AC10 40 mm	6013, 6014 6213 DN 10...20, 6281, 5404, 6240 DN 6	DIN EN 175 301 - 803, form A	12	0.6	20044994	–
		DIN EN 175 301 - 803, form A	20	2	20045040	20045049
		DIN EN 175 301 - 803, form A	65	7	20045051	20045062
AC19 42 mm	6026, 6027, 6213 DN 13...40, 6407, 6240 DN 12	DIN EN 175 301 - 803, form A	44	6.5	350043	389296
		Cable ATEX/IECEX	44	6.5	389296	389297
		Terminal box ATEX/IECEX	44	6.5	389298	389299
		DIN EN 175 301 - 803, form A	85	8.5	338843	338845

1.) Guaranteed use depends on the version in question and can only be confirmed by discussing it with your Bürkert contact person.

DTS 1000567590 EN Version: A Status: RL (released | freigegeben | validé) printed: 23.02.2023

4.4. Ordering chart for Type 6013 with Kick and Drop coil

The Type 6013 valve is a direct-acting 2/2-way plunger valve. The Kick and Drop coil enables the holding power to be reduced by up to 10 watts, depending on the version, and an increase in the pressure range for the normally closed version.



Note:

- For more information on the solenoid valve, see data sheet **Type 6013** ▶.
- Further variants with stainless steel body without short circuit ring, alternative voltages, NPT or RC internal threads, as flange version or other seal materials possible on request.

Circuit function	Port connection	Orifice [mm]	K _v value water [m³/h]	Coil power		Pressure range [bar]	Article no.	
				Inrush power [W]	Holding power [W]		24 / AC/DC [V/Hz]	230...240/AC [V/Hz]
Brass body, G internal thread, seal material FKM/FKM								
A, solenoid valve 2/2-way Direct-acting Normally closed 	G 1/8	1.0	0.04	12	0.6	0...60	20046576	X
	G 1/4	2.0	0.12	12	0.6	0...20	20046577	X
		3.0	0.23	12	0.6	0...6	20046578	X
		4.0	0.30	12	0.6	0...2	20046579	X
		6.0	0.55	12	0.6	0...0.5	20046580	X
	G 1/2	1.0	0.04	20	2	0...60	20046581	20046605
		2.0	0.12	20	2	0...30	20046582	20046606
		3.0	0.23	20	2	0...10	20046583	20046608
		4.0	0.30	20	2	0...4	20046584	20046609
		6.0	0.55	20	2	0...1	20046585	20046611
B, solenoid valve 2/2-way Direct-acting Normally open 	G 1/8	1.0	0.04	20	2	0...40	20046612	20046630
	G 1/4	2.0	0.12	20	2	0...16	20046613	20046631
		3.0	0.23	20	2	0...8	20046615	20046632
		4.0	0.30	20	2	0...4	20046616	20046633
		6.0	0.55	20	2	0...2	20046617	20046634

X: on request

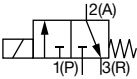
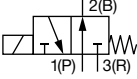
4.5. Ordering chart for Type 6014 with Kick and Drop coil

The Type 6014 valve is a direct-acting 3/2-way plunger valve. The Kick and Drop coil enables the holding power to be reduced to up to 10 watts, depending on the version.



Note:

- For more information on the solenoid valve, see data sheet **Type 6014** ▶.
- Further variants with stainless steel body without short circuit ring, alternative voltages, NPT or RC internal threads, as flange version or other seal materials possible on request.

Circuit function	Port connection	Orifice	K _v value water	Coil power		Pressure range	Article no.	
				Inrush power	Holding power		24 / AC/DC	230...240/AC
		[mm]	[m ³ /h]	[W]	[W]	[bar]	[V/Hz]	[V/Hz]
Brass body, G internal thread, seal material FKM/FKM								
C, solenoid valve 3/2-way Direct-acting Normally closed 	G 1/8	1.5	0.07	20	2	0...16	20046635	20046663
	G 1/4	2.0	0.11	20	2	0...10	20046636	20046664
		2.5	0.16	20	2	0...6	20046637	20046665
		3.0	0.2	20	2	0...4	20046638	20046666
D, solenoid valve 3/2-way Direct-acting Normally open 	G 1/8	1.5	0.07	20	2	0...16	20046639	20046667
	G 1/4	2.0	0.11	20	2	0...10	20046640	20046668
		2.5	0.16	20	2	0...6	20046641	20046669
		3.0	0.2	20	2	0...4	20046642	20046670

DTS 1000567590 EN Version: A Status: RL (released | freigegeben | validé) printed: 23.02.2023

4.6. Ordering chart for Type 6026 with Kick and Drop coil

The Type 6026 valve is a direct-acting, media-separated 2/2-way plunger valve.



Note:

- For more information on the solenoid valve, see data sheet **Type 6026** ▶.
- Further variants with brass body without short circuiting ring, alternative voltages, NPT or RC internal threads, as flange version or other seal materials possible on request.

Circuit function	Port connection	Orifice	K _v value water	Coil power		Pressure range	Article no.	
				Inrush power	Holding power		24 / AC/DC	230...240/AC
		[mm]	[m ³ /h]	[W]	[W]	[bar]	[V/Hz]	[V/Hz]
Stainless steel body, G internal thread, seal material PTFE								
A, solenoid valve 2/2-way Direct-acting Normally closed	G ¼	4.0	0.5	44	6.5	0...10	20047000	20047091
		6.0	0.8	44	6.5	0...10	20047001	20047098
Stainless steel body, NPT internal thread, seal material PTFE								
A, solenoid valve 2/2-way Direct-acting Normally closed	NPT ¼	4.0	0.5	44	6.5	0...10	20047002	20047005
		6.0	0.8	44	6.5	0...10	20047003	20047007

DTS 1000567590 EN Version: A Status: RL (released | freigegeben | validé) printed: 23.02.2023

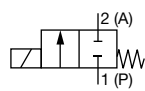










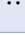
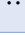
4.7. Ordering chart for Type 6027 with Kick and Drop coil

The Type 6027 valve is a direct-acting 2/2-way plunger valve. The Kick and Drop coil enables the holding power to be reduced by up to 14 watts, and an increase in the pressure range for the normally closed version.



Note:

- For more information on the solenoid valve, see data sheet **Type 6027** ▶.
- Further variants with stainless steel body, alternative voltages, NPT or RC internal threads, as flange or screw-in version or other seal materials possible on request.

Circuit function	Port connection	Orifice [mm]	K _v value water [m ³ /h]	Coil power		Pressure range [bar]	Article no.	
				Inrush power [W]	Holding power [W]		24 / AC/DC [V/Hz]	230...240/AC [V/Hz]
Brass body, G internal thread, seal material FKM/FKM								
A, solenoid valve 2/2-way Direct-acting Normally closed 	G ¼	3.0	0.28	44	6.5	0...30	20047349 	20047359 
		4.0	0.54	44	6.5	0...30	20010689 	20047360 
	G ⅜	6.0	0.95	44	6.5	0...6	20047350 	20047361 
		8.0	1.6	44	6.5	0...3	20047351 	20047362 
	G ½	10.0	1.8	44	6.5	0...2	20033786 	20047363 
		12.0	0.2	44	6.5	0...1.2	20047352 	20047364 

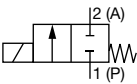
4.8. Ordering chart for Type 6213 with Kick and Drop coil

The Type 6213 valve is a servo-assisted 2/2-way diaphragm valve with spring coupling of the pilot valve and diaphragm. The Kick and Drop coil enables the holding power to be reduced to up to 14 watts, depending on the version.



Note:

- For more information on the solenoid valve, see data sheet **Type 6213** ▶.
- Further variants with stainless steel body without short circuit ring, alternative voltages, NPT or RC internal threads, as flange version or other seal materials possible on request.

Circuit function	Port connection	Orifice [mm]	K _v value water [m ³ /h]	Coil power		Pressure range [bar]	Article no.	
				Inrush power [W]	Holding power [W]		24 / AC/DC [V/Hz]	230...240/AC [V/Hz]
Brass body, G internal thread, seal material FKM/FKM								
A, solenoid valve 2/2-way Direct-acting Normally closed 	G 3/8	10.0	1.9	20	2	0...10	20047785	20047788
	G 1/2	13.0	3.6	20	2	0...10	20047786	20047789
				44	6.5		20047791	20047793
	G 3/4	20.0	8.3	20	2	0...10	20047787	20047790
				44	6.5		20047792	20047794
	G 1	25.0	11	85	8.5	0...10	20004797	20048204
	G 1 1/4	25.0	11	85	8.5	0...10	20048207	20048205
	G 1 1/2	40.0	30	85	8.5	0...10	20008169	20048208
G 2	40.0	30	85	8.5	0...10	20008170	20048210	

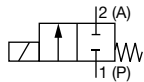
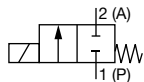
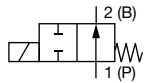
4.9. Ordering chart for Type 6281 with Kick and Drop coil

The Type 6281 valve is a servo-assisted 2/2-way diaphragm valve. A minimum differential pressure is required in order to function. The Kick and Drop coil enables the holding power to be reduced to up to 7 watts, depending on the version.



Note:

- For more information on the solenoid valve, see data sheet **Type 6281** ▶.
- Further variants with stainless steel body without short circuit ring, alternative voltages, NPT or RC internal threads, as flange version or other seal materials possible on request.

Circuit function	Port connection	Orifice [mm]	K _v value water [m ³ /h]	Coil power		Pressure range [bar]	Article no.	
				Inrush power [W]	Holding power [W]		24 / AC/DC [V/Hz]	230...240/AC [V/Hz]
Brass body, G internal thread, seal material FKM/FKM								
A, solenoid valve 2/2-way Direct-acting Normally closed 	G ¼	10.0	1.5	12	0.6	0.2...16	20046906	-
				20	2		X	20046961
	G ⅜	10.0	1.9	12	0.6	0.2...16	20046907	-
				20	2		X	20046962
	G ½	13.0	3.8	12	0.6	0.2...16	20046908	-
				20	2		X	20046963
	G ¾	20.0	8.5	12	0.6	0.2...16	20046909	-
20				2	X		20046964	
G 1	25.0	12	12	0.6	0.2...16	20046910	-	
			20	2		X	20046965	
G 1¼	40.0	23	12	0.6	0.2...16	20046911	-	
			20	2		X	20046966	
G 1½	40.0	30	12	0.6	0.2...16	20046912	-	
			20	2		X	20046967	
A, solenoid valve 2/2-way Direct-acting Normally closed 	G 2	50.0	40	12	0.6	0.2...16	20046913	-
				20	2		X	20046968
	G 2½	50.0	40	12	0.6	0.2...16	20046914	-
20				2	X		20046969	
B, solenoid valve 2/2-way Direct-acting Normally open 	G ¼	10.0	1.5	20	2	0.2...16	20046924	20046970
	G ⅜	10.0	1.9	20	2	0.2...16	20046925	20046971
	G ½	13.0	3.8	20	2	0.2...16	20046927	20046972
	G ¾	20.0	8.5	20	2	0.2...16	20046928	20046973
	G 1	25.0	12	20	2	0.2...16	20046929	20046974
	G 1¼	40.0	23	20	2	0.2...16	20046930	20046975
	G 1½	40.0	30	20	2	0.2...16	20046931	20046976
	G 2	50.0	40	20	2	0.2...16	20046932	20046978
	G 2½	50.0	40	20	2	0.2...16	20046933	20046979

X: on request

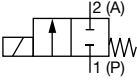
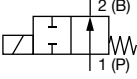
4.10. Ordering chart for Type 5404 with Kick and Drop coil

The Type 5404 valve is a servo-assisted 2/2-way piston valve. A minimum differential pressure is required in order to function. The Kick and Drop coil enables the holding power to be reduced to up to 9 watts, depending on the version.



Note:

- For more information on the solenoid valve, see data sheet **Type 5404** ▶.
- Further variants without short circuiting ring, alternative voltages, NPT or RC internal threads, as flange version or other seal materials possible on request.

Circuit function	Port connection	Orifice	K _v value water	Coil power		Pressure range	Article no.	
				Inrush power	Holding power		24 / AC/DC	230...240/AC
		[mm]	[m ³ /h]	[W]	[W]	[bar]	[V/Hz]	[V/Hz]
Brass body, G internal thread, seal material PTFE/FKM								
A, solenoid valve 2/2-way Direct-acting Normally closed 	G 1/2	12.0	2	12	0.6	1...50	20047544 ☒	-
				20	2		X	20047551 ☒
	G 3/4	20.0	7	12	0.6	1...25	20047545 ☒	-
				20	2		X	20047552 ☒
	G 1	25.0	10	12	0.6	1...25	20047546 ☒	-
				20	2		X	20047554 ☒
B, solenoid valve 2/2-way Direct-acting Normally open 	G 1/2	12.0	2	20	2	1...32	20047547 ☒	20047555 ☒
	G 3/4	20.0	7	20	2	1...25	20047548 ☒	20047559 ☒
	G 1	25.0	10	20	2	1...25	20047550 ☒	20047560 ☒

X: on request

4.11. Ordering chart for Type 6240 with Kick and Drop coil

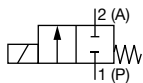
The Type 6240 valve is a servo-assisted 2/2-way piston valve with spring coupling of the pilot valve and piston. The Kick and Drop coil enables the holding power to be reduced by up to 14 watts, and an increase in the pressure range, depending on the version.



Note:

- For more information on the solenoid valve, see data sheet **Type 6240** ▶.
- Further variants with brass body, alternative voltage, NPT or RC internal threads, as flange or cartridge version or other seal materials possible on request.

Circuit function	Port connection	Orifice	K _v value water	Coil power		Pressure range	Article no.	
				Inrush power	Holding power		24 / AC/DC	230...240/AC
		[mm]	[m ³ /h]	[W]	[W]	[bar]	[V/Hz]	[V/Hz]
Stainless steel body, G-internal thread, seal material FKM/FKM								
A, solenoid valve 2/2-way Direct-acting Normally closed	G ¼	6.0	0.6	20	2	0...25	20047418	20047420
	G ⅜	6.0	0.6	20	2	0...25	20047419	20047421
	G ½	12.0	2.2	44	6.5	0...25	20047422	20047423



4.12. Ordering chart for Type 6407 with Kick and Drop coil

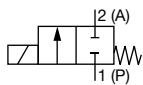
The Type 6407 valve is a servo-assisted 2/2-way piston valve with fixed coupling of the pilot valve and piston. The Kick and Drop coil enables the holding power to be reduced to up to 14 watts.



Note:

- For more information on the solenoid valve, see data sheet **Type 6407** ▶.
- Further variants without short circuiting ring, alternative voltages, NPT or RC internal threads, as flange version or other seal materials possible on request.

Circuit function	Port connection	Orifice	K _v value water	Coil power		Pressure range	Article no.	
				Inrush power	Holding power		24 / AC/DC	230...240/AC
		[mm]	[m ³ /h]	[W]	[W]	[bar]	[V/Hz]	[V/Hz]
Brass body, G internal thread, seal material FKM/FKM								
A, solenoid valve 2/2-way Direct-acting Normally closed	G ½	13	3.7	44	6.5	0...10	20047532	20047535
	G ¾	20	5.6	44	6.5	0...10	20047533	20047536
	G 1	25	10.0	44	6.5	0...10	20047534	20047537



DTS 1000567590 EN Version: A Status: RL (released | freigegeben | valide) printed: 23.02.2023

4.13. Ordering chart for accessories

Cable plug Type 2518, form A according to DIN EN 175301 - 803

Note:

For further versions see data sheet [Type 2518](#) ▶.

Cable plug	Dimensions	Version	Voltage	Article no.
		Without circuitry (AC/DC)	0...250 V AC/DC	314802
		With LED (AC/DC)	12...24 V AC/DC	314812
		With LED and varistor (AC/DC)	12...24 V AC/DC	314820
		Without circuitry (AC/DC) with silicone seal for higher ambient temperature, e.g. steam version (NA07)	0...250 V AC/DC	361687

Bürkert – Close to You

All current addresses can be found at www.burkert.com

DTS 1000567590 EN Version: A Status: RL (released | freigegeben | validé) printed: 23.02.2023

